



REstoration, COordination, VERification (RECOVER)

Southwest Florida Module *Where, why, and what's next?*

Rodrigo Sedeno, USACE 

September 1st, 2022



Presentation Overview

- Brief background on Everglades Restoration and the origins of RECOVER
- Overview of the Science of Everglades Restoration
- RECOVER's new Module – Southwest Florida

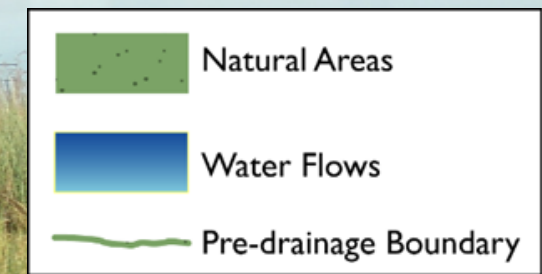
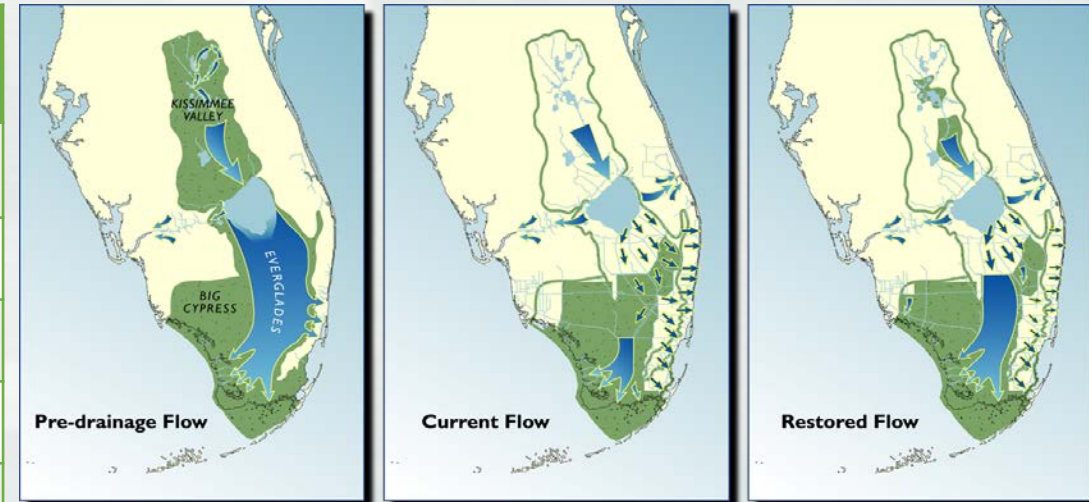


CERP

Comprehensive Everglades Restoration Plan

CERP Goals and Objectives

- 1** Enhance ecological values.
 - a** Increase the total spatial extent of natural areas.
 - b** Improve habitat and functional quality.
 - c** Improve native plant and animal species diversity.
- 2** Enhance economic values and social well-being.
 - a** Increase availability of fresh water (agricultural/municipal and industrial).
 - b** Reduce flood damages (agricultural/urban).
 - c** Provide recreational opportunities.
 - d** Protect cultural and archaeological resources and values.





What is RECOVER?

REStoration COordination VERification

- Interdisciplinary, scientific and technical team, with members from multiple agencies and tribes with responsibility resting jointly in USACE and the SFWMD
- RECOVER supports and conducts scientific and technical evaluations and assessments for improving CERP's ability to restore.
- Promotes collaborative and consensus-based view
- RECOVER Mission: Assessment – Evaluation – Planning/Integration



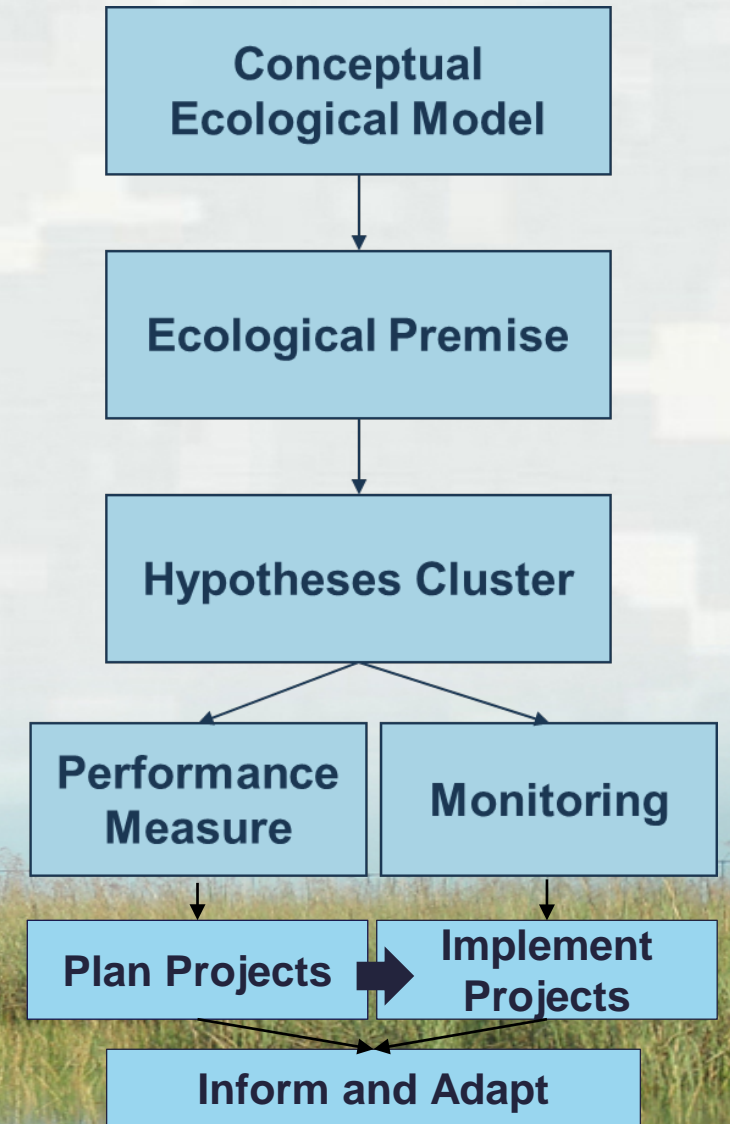
CERP Science Framework

- **RECOVER Monitoring and Assessment Plan (MAP)**

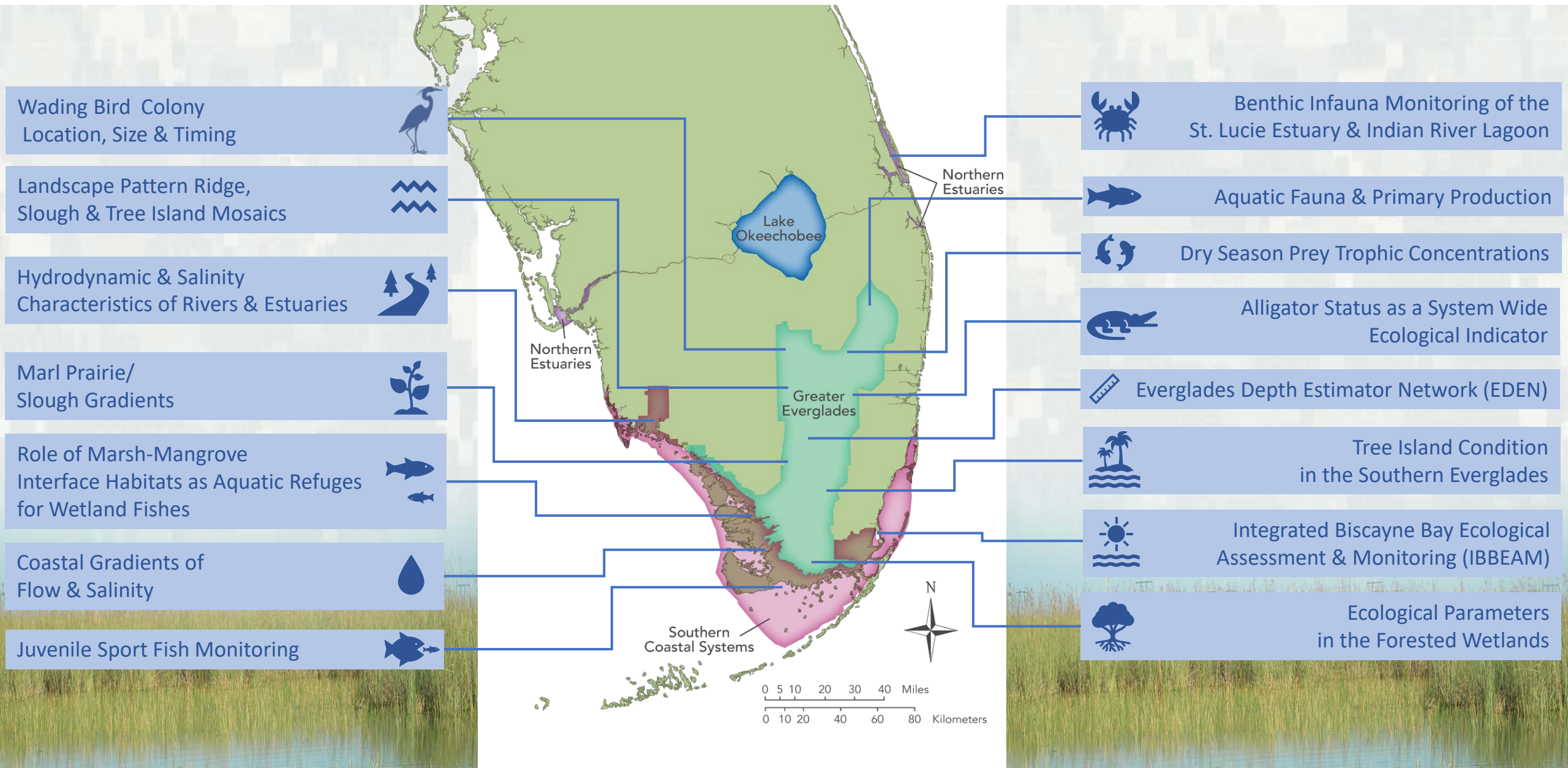
- ▶ Organized around Conceptual Ecological Models (CEM's)
- ▶ Hypothesis Clusters
- ▶ Indicator Species
- ▶ Performance Measures

- **Adaptive Management**

- ▶ Feedback Loop

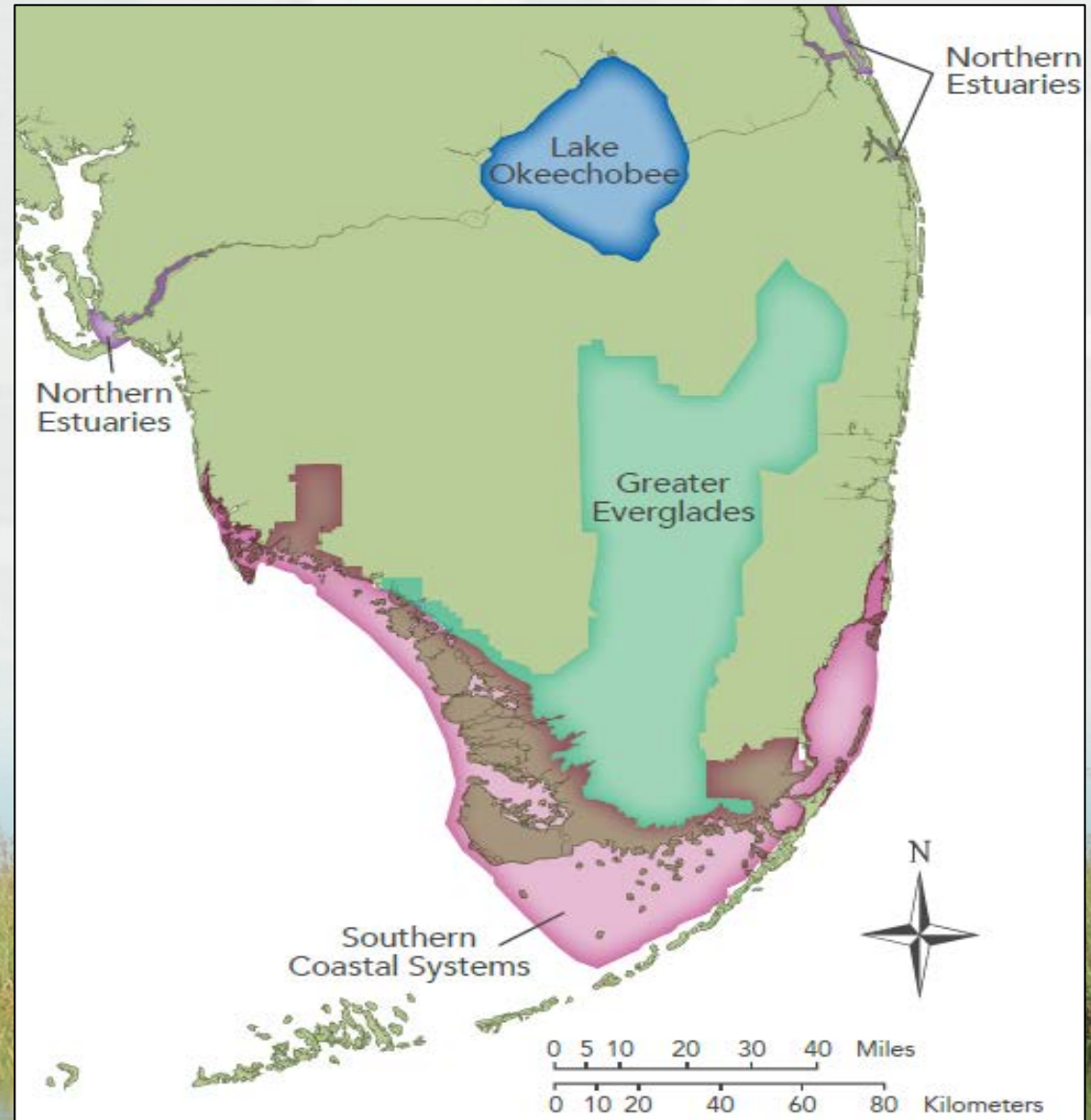


RECOVER MONITORING & ASSESSMENT PLAN



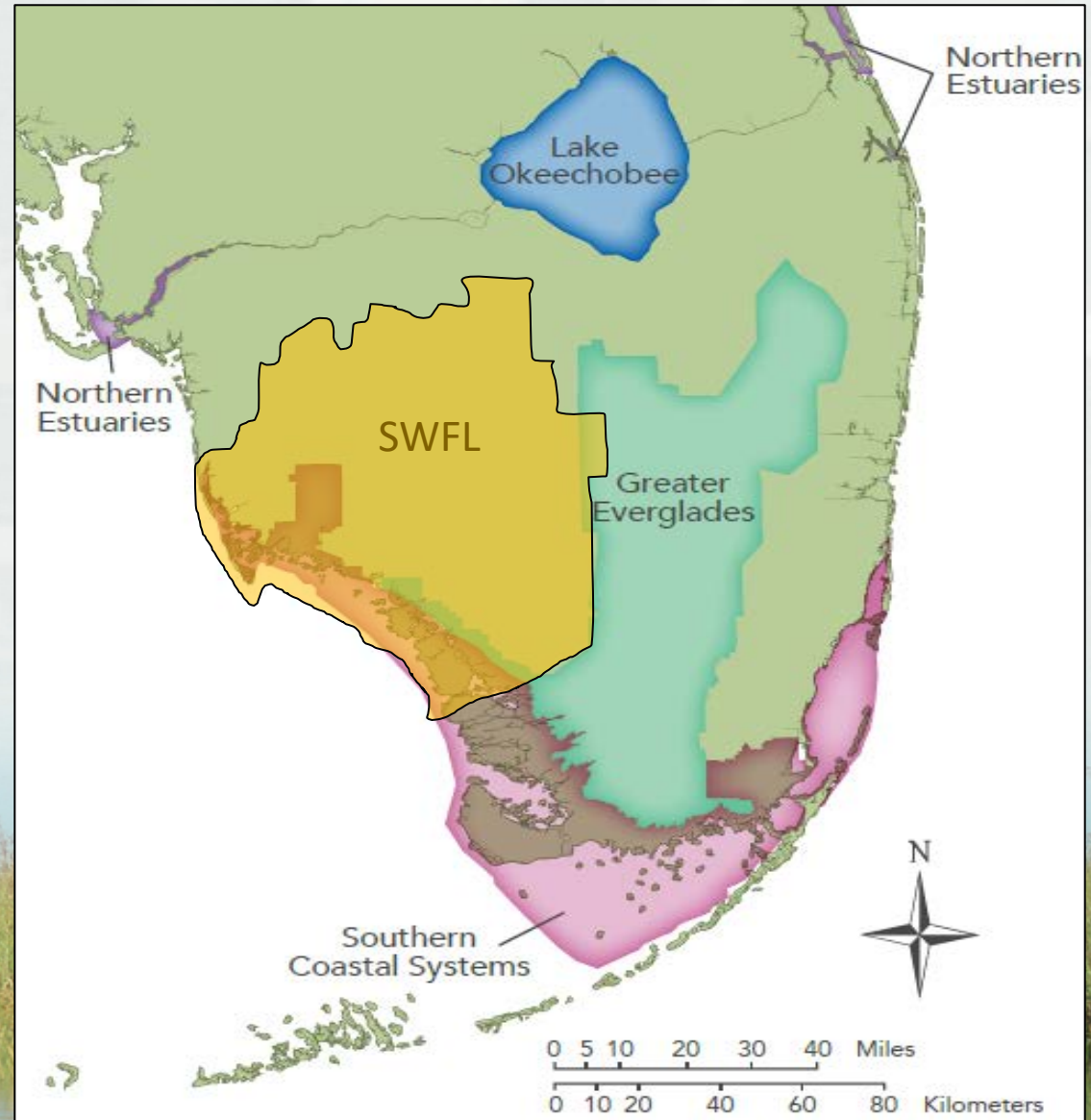
RECOVER Modules

- Lake Okeechobee
- Northern Estuaries
- Greater Everglades
- Southern Coastal Systems



RECOVER Modules

- Lake Okeechobee
- Northern Estuaries
- Greater Everglades
- Southern Coastal Systems
- Southwest Florida

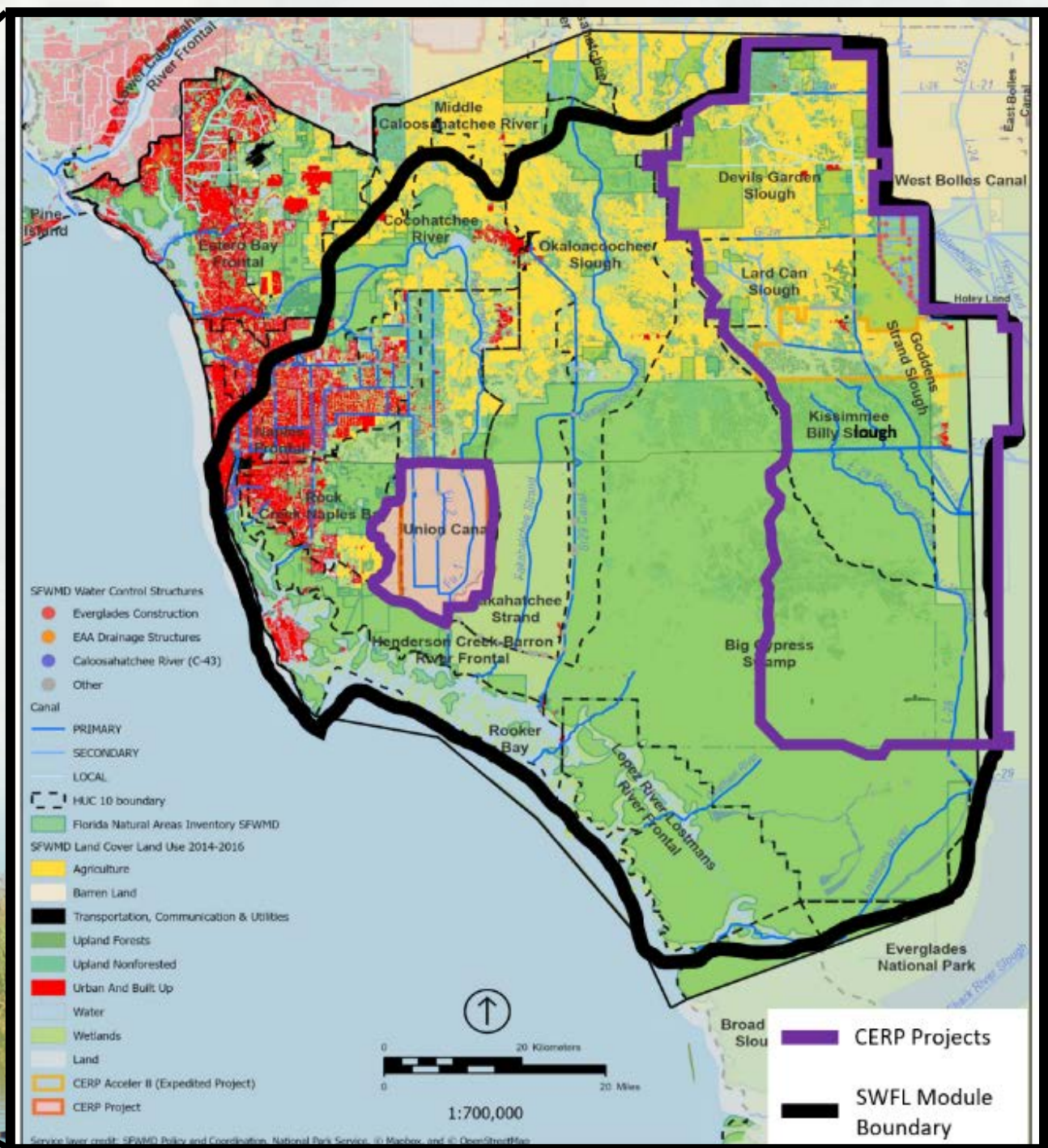
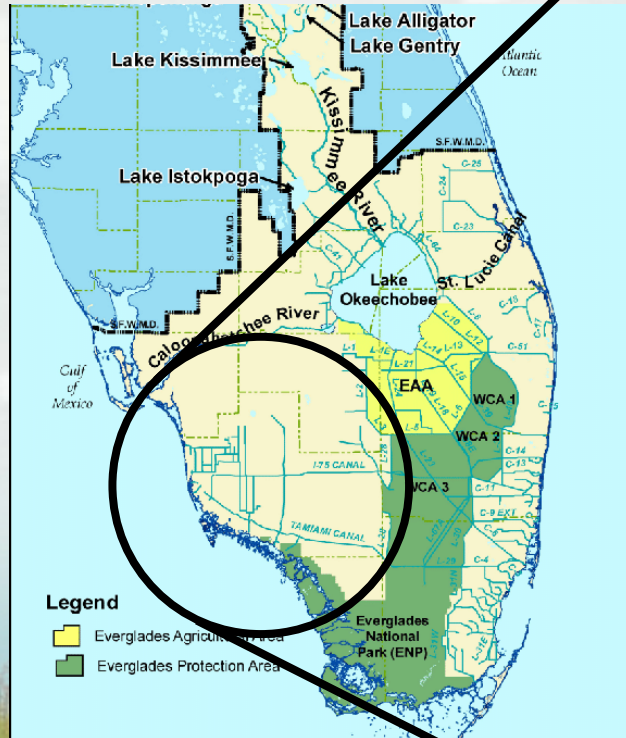


Big Cypress



Ridge-Slough-T.I

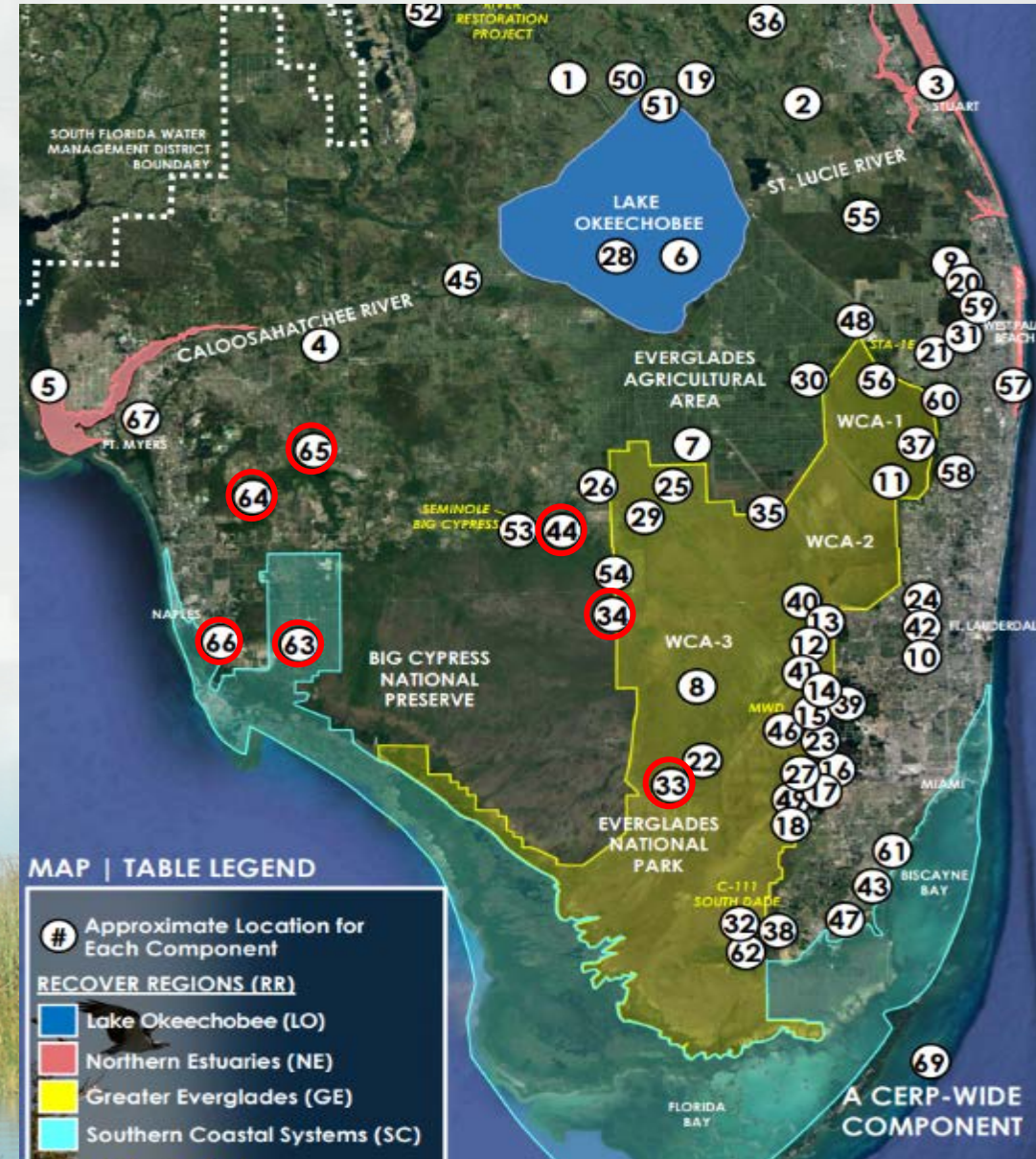




The need for a new RECOVER SWFL module

Why Now?

- 33 – Decompartmentalization of WCA 3 (QQQ)
- 34 – Flow to central WCA 3A (RR)
- 44 – Big Cypress/L-28 Interceptor Modifications (CCC)
- 63 – Southern Golden Gate Estates Hydrologic Restoration (Picayune)
- 64 – Southern CREW Project (OPE)
- 65 – Lake Trafford Restoration (OPE)
- 66 – Henderson Creek/Belle Meade Restoration (OPE)

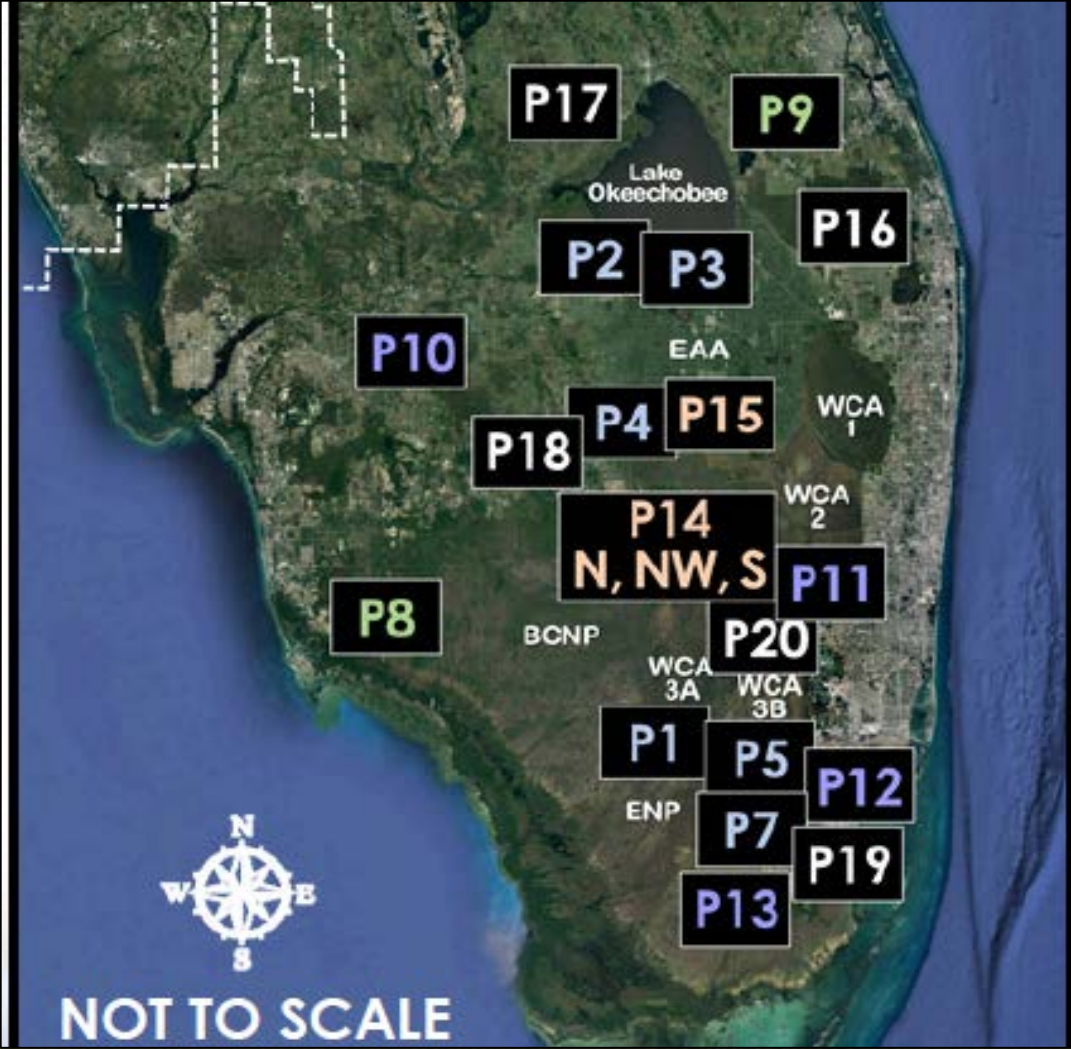


Need for a new RECOVER SWFL module

Why Now?

P18 Western Everglades Restoration Project (WERP)
(planning phase)

P8 Picayune Strand Restoration Project (PSRP)
(construction phase)





Jorge.R.Sedeno@usace.army.mil

