



FLORIDA DEPARTMENT OF ENVIRONMENTAL PROTECTION

Joanna Walczak & Nicole Morgan

Office of Resilience and Coastal Protection,
Coral Protection and Restoration Program &
Division of Ecosystem Assessment and Restoration



FLORIDA DEPARTMENT OF ENVIRONMENTAL PROTECTION



About The Florida Department of Environmental Protection

DEP's mission is to protect, conserve and manage the state's natural resources and enforces its environmental laws.

DEP's vision is to advance Florida's position as a world leader in protecting natural resources while growing the state's economy.

DEP values are leadership, integrity, accountability, communication, innovation and service.



MISSION AND STRUCTURE

DEP is divided into three primary areas:

Regulatory Programs

- Air
- Waste
- Water Resource Management
- Florida Geological Survey
- Law Enforcement and Emergency Response
- **Regulatory Districts**

Land and Recreation

- **Recreation and Parks**
- State Lands

Ecosystem Restoration

- **Office of Resilience and Coastal Protection**
- Water Policy and Ecosystem Restoration
- **Environmental Assessment and Restoration**
- Water Restoration Assistance
- Water Management Districts**



PERMITTING OF FLORIDA'S CORAL REEF

Regulatory Districts

- **Southeast District**

Recreation and Parks

- St. Lucie Inlet Preserve State Park
- John Pennekamp Coral Reef State Park

Office of Resilience and Coastal Protection

- Florida Coastal Management Program
- Clean Boating and Clean Vessel Act Grant Programs
- **Beaches, Inlets, and Ports Program**
- SE Region:
 - Coral Reef Conservation Program
 - Florida Keys National Marine Sanctuary
 - Biscayne Bay and FL Keys APs
- Coral Protection and Restoration Program



MANAGEMENT OF FLORIDA'S CORAL REEF

Regulatory Districts

- Southeast District

Recreation and Parks

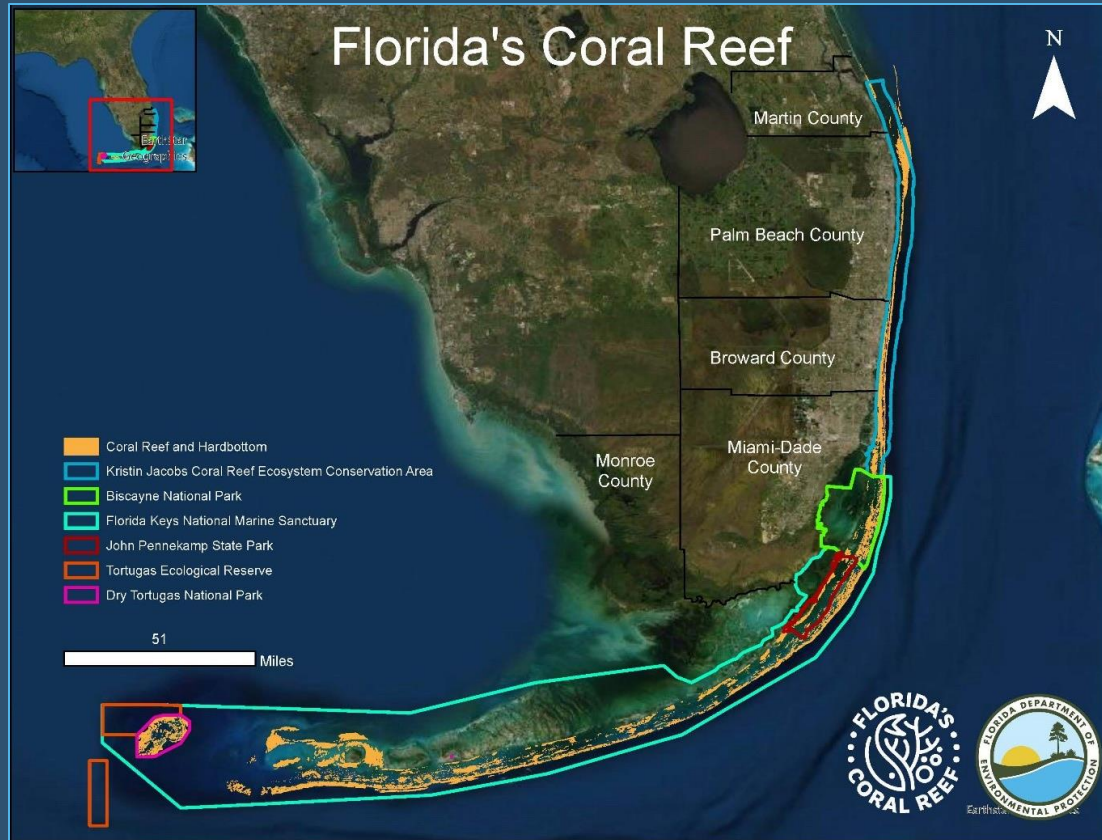
- **St. Lucie Inlet Preserve State Park**
- **John Pennekamp Coral Reef State Park**

Office of Resilience and Coastal Protection

- Florida Coastal Management Program
- Clean Boating and Clean Vessel Act Grant Programs
- Beaches, Inlets, and Ports Program
- **SE Region:**
 - **Coral Reef Conservation Program**
 - **Florida Keys National Marine Sanctuary**
 - **Biscayne Bay and FL Keys APs**
- **Coral Protection & Restoration Program**



PLACE-BASED MANAGEMENT



Encouraging collaborative, holistic, and integrated approaches to preserving Florida's Coral Reef

STATE PARKS:

- St. Lucie Inlet Preserve State Park
- John Pennekamp Coral Reef State Park

ORCP SOUTHEAST REGION:

- Biscayne Bay, Coupon Bight, and Lignumvitae Aquatic Preserves
- Coral Reef Conservation Program
- Florida Keys National Marine Sanctuary



CORAL PROTECTION AND RESTORATION PROGRAM



Photo Credit: NSU

The **Coral Protection and Restoration Program** seeks to holistically manage, protect, and restore Florida's Coral Reef by:

- **Effectively administering state and federal funding.**
- **Providing leadership for:**
 - Florida stony coral tissue loss disease (SCTLD) response
 - Restoration of Florida's Coral Reef
 - Enhancement of regional water quality
- **Guiding regional, state, and national coral reef authorities, policies, and procedures.**



CORAL PROTECTION AND RESTORATION FUNDING



- **Biscayne Bay Water Quality Improvement Grant**
 - \$20,000,000 annually
- **Resilient Coastlines Funding**
 - Currently \$8M annually
 - Supports SCTL research and response, restoration and propagation, and enhancement of regional water quality
- ***NEW* Florida's Coral Reef Restoration and Recovery Initiative**
 - \$10,000,000
 - Infrastructure to support reef restoration



MISSION AND STRUCTURE

DEP is divided into three primary areas:

Regulatory Programs

- Air
- Waste
- Water Resource Management
- Florida Geological Survey
- Law Enforcement and Emergency Response
- Regulatory Districts

Land and Recreation

- Recreation and Parks
- State Lands

Ecosystem Restoration

- Office of Resilience and Coastal Protection
- Water Policy and Ecosystem Restoration
- **Environmental Assessment and Restoration**
- Water Restoration Assistance
- Water Management Districts



MANAGEMENT OF FLORIDA'S WATER QUALITY

Several Programs are involved in the assessment and restoration adaptive management strategy:

Environmental Assessment and Restoration

- Water Quality Standards Program
- Water Quality Monitoring Program
 - Regional Operating Centers
- DEP Laboratory
- Water Quality Assessment Program
- Water Quality Evaluation and TMDL Program
- Watershed Services Program
- Water Quality Restoration Program



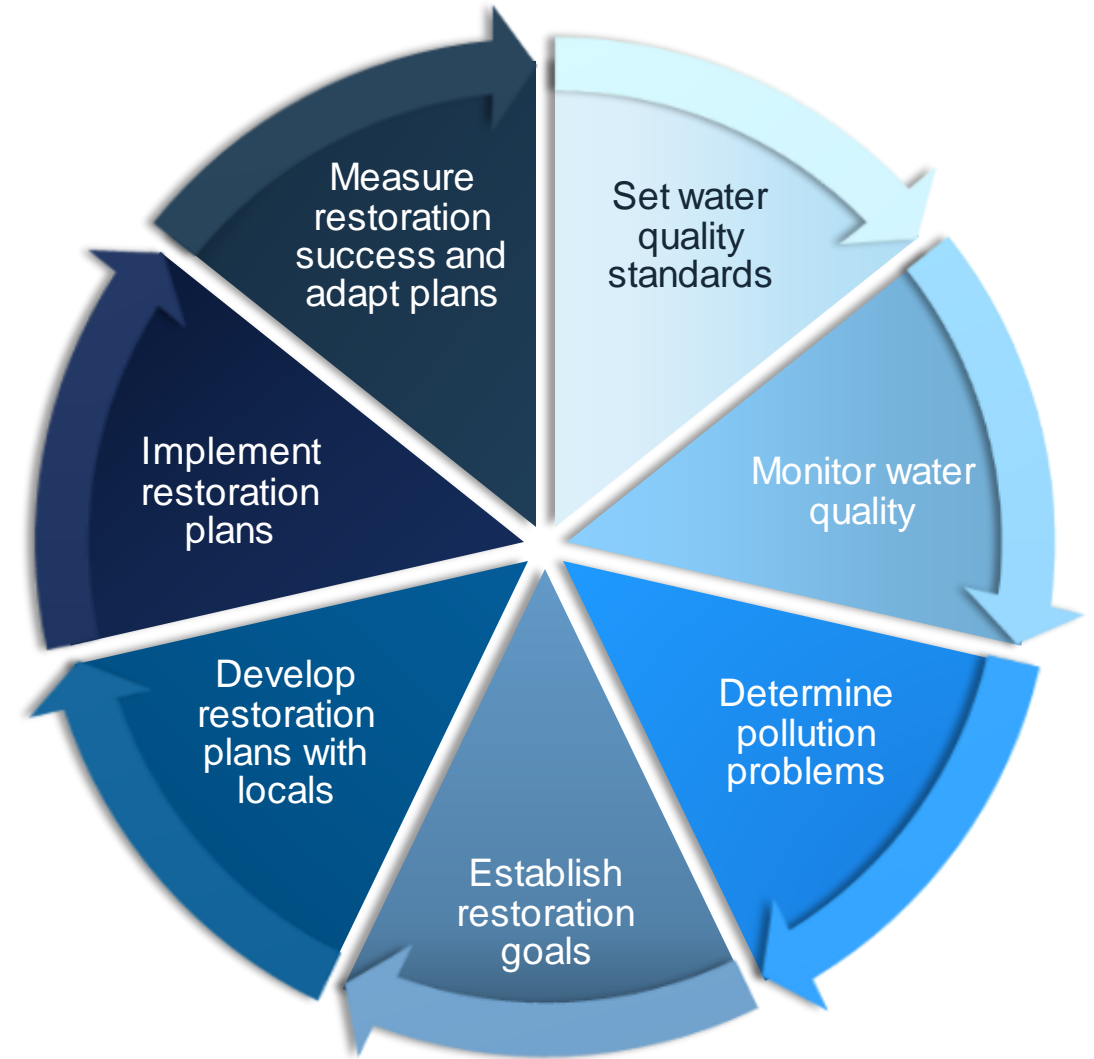
Division of Environmental Assessment and Restoration

Water Quality Standards

- Set standards based on toxicological or ecological data, as appropriate
 - Includes chl- α , TN, TP
 - Turbidity narrative nutrient criteria are in development
- Set quality assurance requirements, including standard operating procedures for field sampling and requirements for laboratory analyses

Water Quality Monitoring

- Assess upstream and coastal waterbodies for impairments using an extensive sampling network





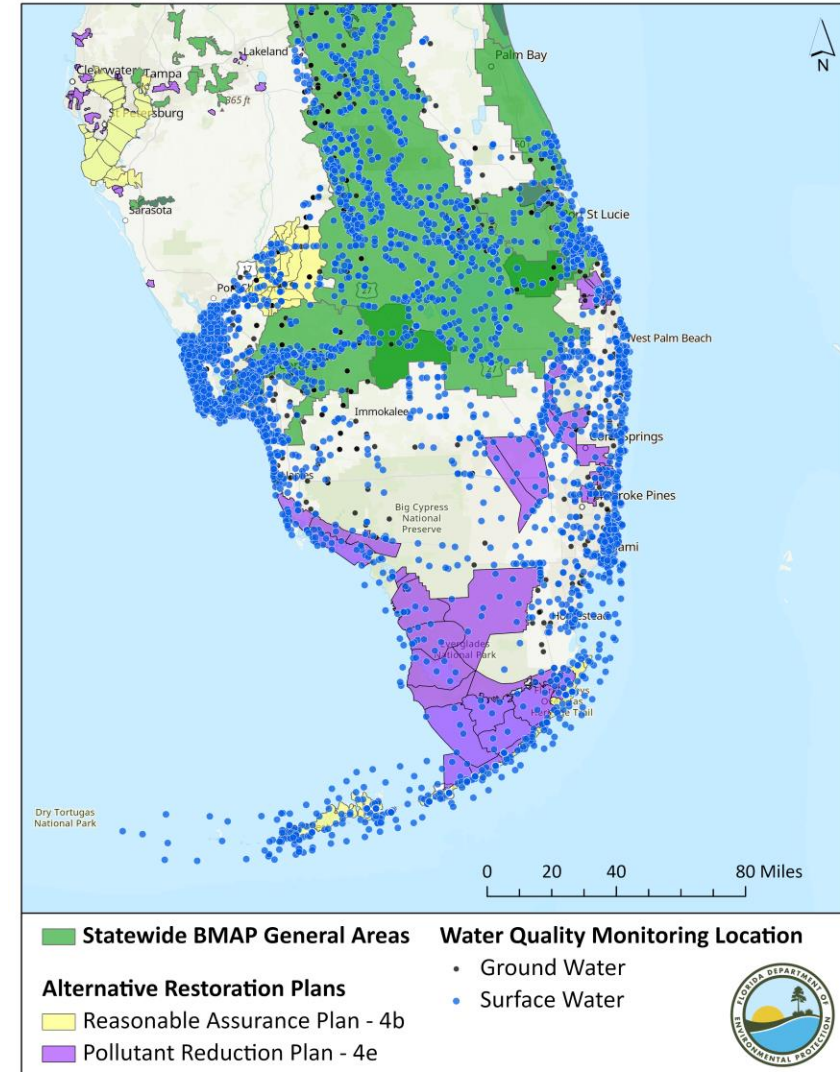
Division of Environmental Assessment and Restoration

Open Water Quality Data

- All water quality data used for impaired waters assessment are stored in the publicly accessible Watershed Information Network (WIN) database

Assessment and Restoration

- Conduct statewide waterbody assessments
- Determine Total Maximum Daily Loads (TMDLs) for impaired waters
 - Currently piloting a Bacteria TMDL
- Develop regional management plans with local stakeholders to implement pollution reduction
 - BMAP, RAP, 4e





THANK YOU

Joanna Walczak

Office of Resilience & Coastal Protection
Coral Protection & Restoration Program

Contact Information:

786-798-4516

Joanna.Walczak@FloridaDEP.gov

Nicole Morgan

Division of Ecosystem
Assessment & Restoration

Contact Information:

850-245-8521

Nicole.Morgan@FloridaDEP.gov