

Tamiami Trail Next Steps Project Update Partnerships to Support Everglades Restoration

SFER Working Group/Science Coordination Group
September 28, 2021

Robert Johnson – DOI/OERI



Original Roadway April 1918



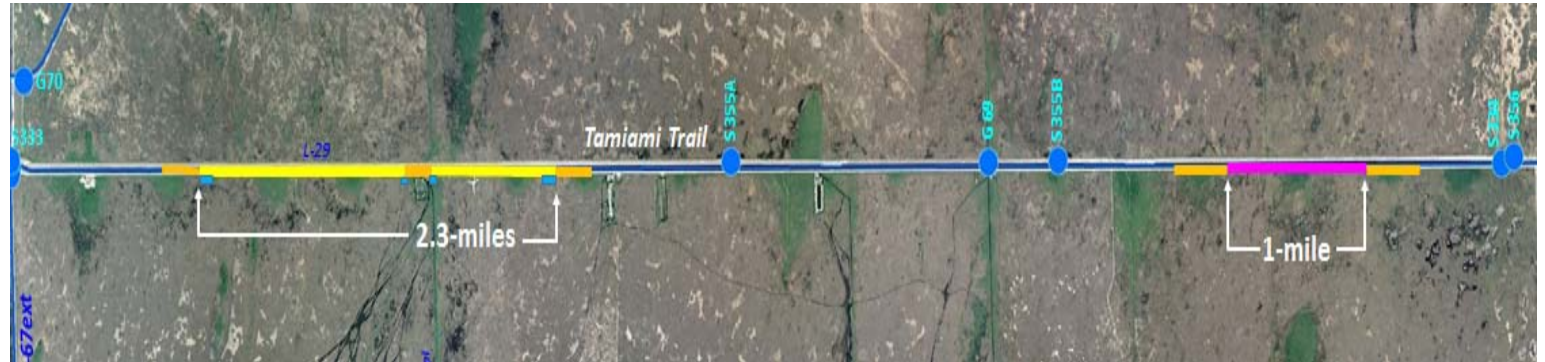
Current Roadway April 2019



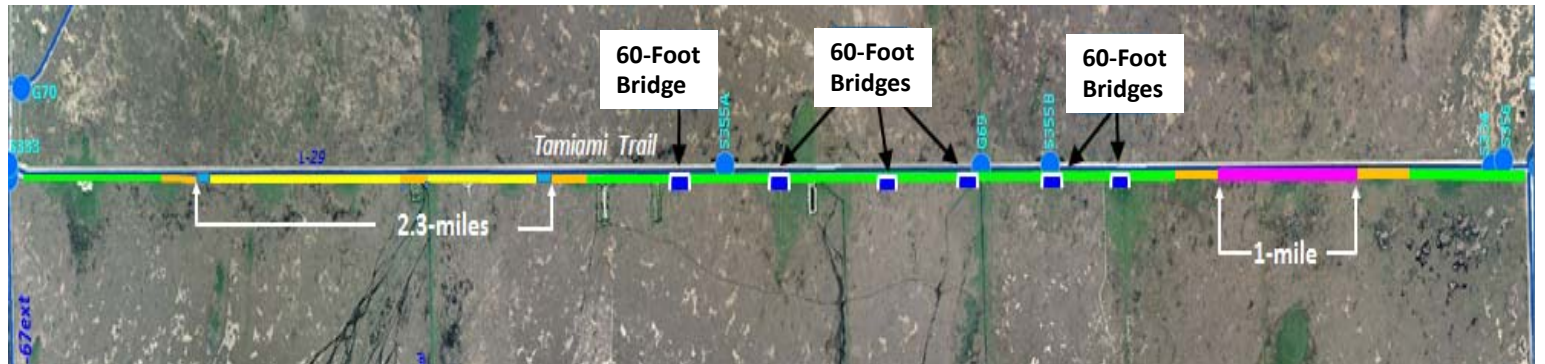
**Tamiami Trail
Modified Water
Deliveries (2014)
1-Mile Bridge, Partial
Roadway Raising**



**Tamiami Trail
Next Steps Phase 1
(2019)
3.3-Miles Bridging,
No Additional
Roadway
Improvements**



**Tamiami Trail
Next Steps Phase 2
(expected mid 2024)
Remaining Roadway
Reconstructed, Six
Small Bridges**



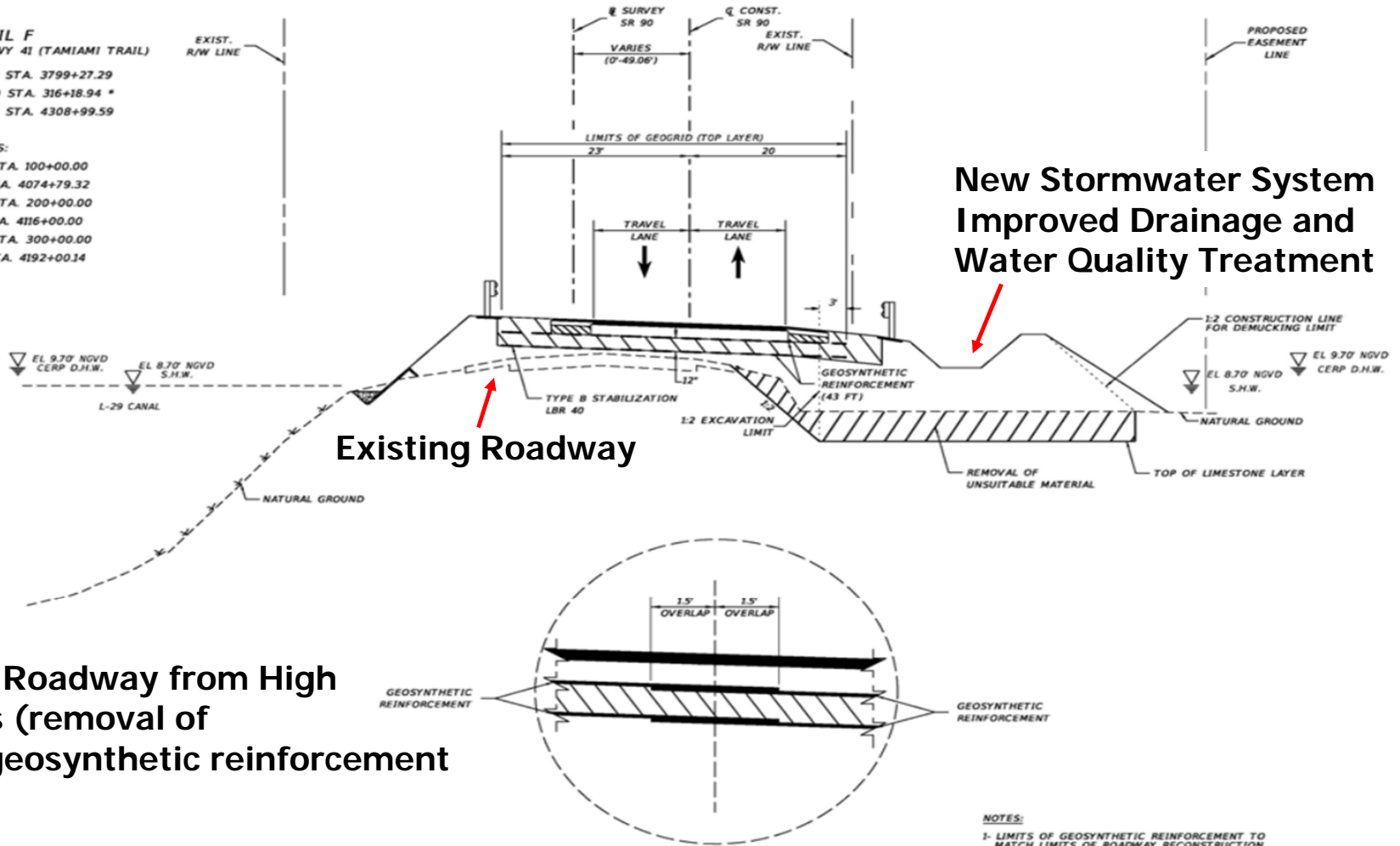
Tamiami Trail Roadway Typical Section

DETAIL F
STATE ROAD 90 / US HWY 41 (TAMIAMI TRAIL)

STA. 3737+41.24 TO STA. 3799+27.29
STA. 3952+64.58 TO STA. 316+18.94 *
STA. 4252+19.23 TO STA. 4308+99.59

* STATION EQUATIONS:

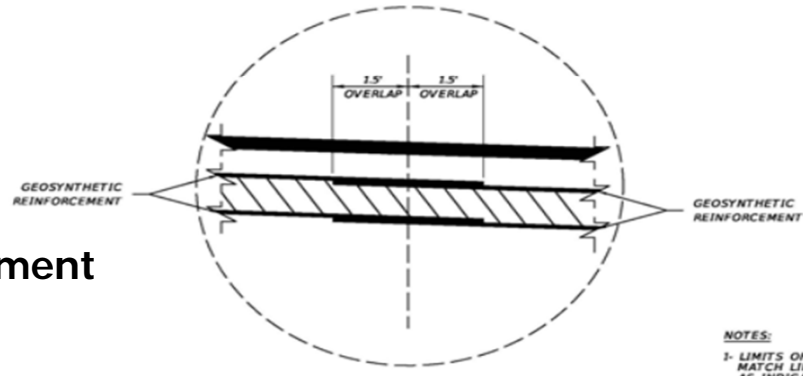
STA. 4025+79.14 = STA. 100+00.00
STA. 149+00.07 = STA. 4074+79.32
STA. 4102+99.87 = STA. 200+00.00
STA. 213+00.18 = STA. 4116+00.00
STA. 4169+34.46 = STA. 300+00.00
STA. 322+65.91 = STA. 4192+00.14



**New Stormwater System
Improved Drainage and
Water Quality Treatment**

Existing Roadway

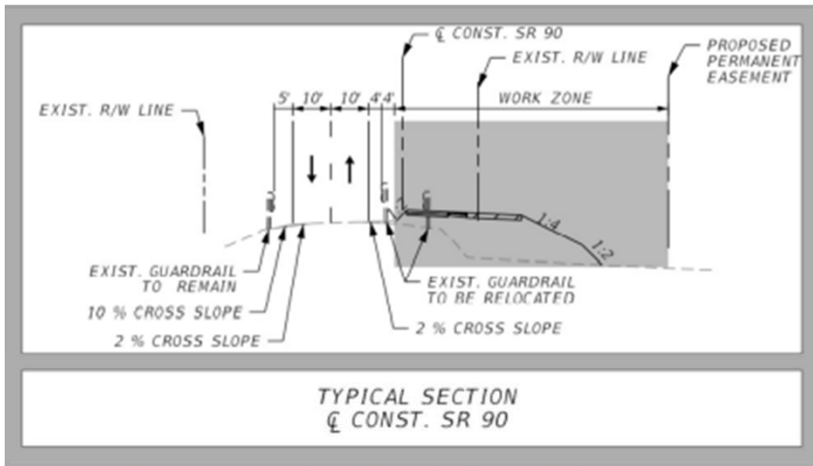
**Protecting the Roadway from High
Water Impacts (removal of
organic soils, geosynthetic reinforcement)**



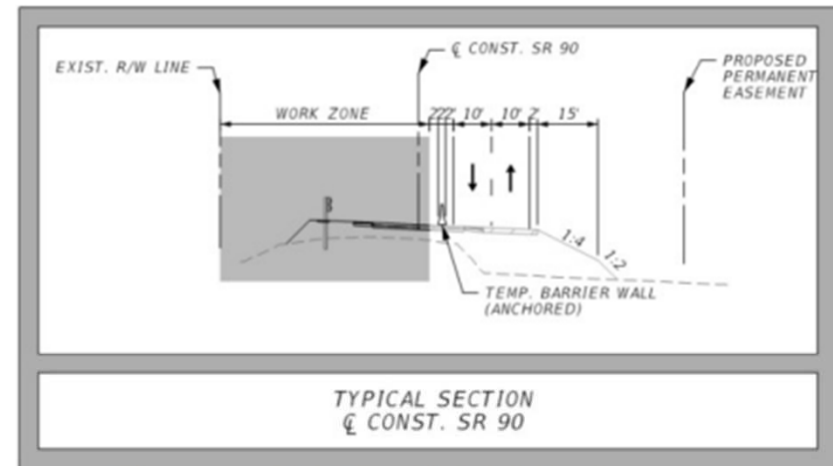
NOT TO SCALE

NOTES:
1- LIMITS OF GEOSYNETHIC REINFORCEMENT TO MATCH LIMITS OF ROADWAY RECONSTRUCTION AS INDICATED IN TYPICAL SECTION 1.

Tamiami Trail Roadway Construction Phases



Phase 1 (Build EB lanes)



Phase 2 (Build WB lanes)

