

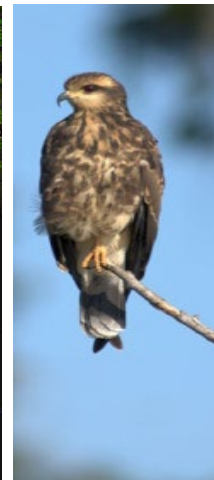


REstoration, COordination, VERification (RECOVER)

Strategy for updating the CERP Monitoring and Assessment Plan (MAP)

Jenna May (USACE)

Working Group/Science
Coordination Group Meeting
May 2, 2023



Presentation Outline

- Background on the CERP MAP
- Strategy for updating the CERP MAP - the RECOVER Five-Year Plan (2022-2026)
- Application to the South Florida Science Plan



CERP MAP Background

The purposes of the Comprehensive Everglades Restoration Plan (CERP) Monitoring and Assessment Plan (MAP) are to:

- Provide a framework that supports measurement of **system-wide responses** to determine how well CERP is achieving its goals and objectives and;
- Support and enable adaptive management (AM) for updating and improving the Plan, when needed.

CERP Goals and Objectives (USACE and SFWMD 1999)

Goal: Enhance Ecological Values

- Increase the total spatial extent of natural areas
- Improve habitat functional quality
- Improve native plant and animal species abundance and diversity

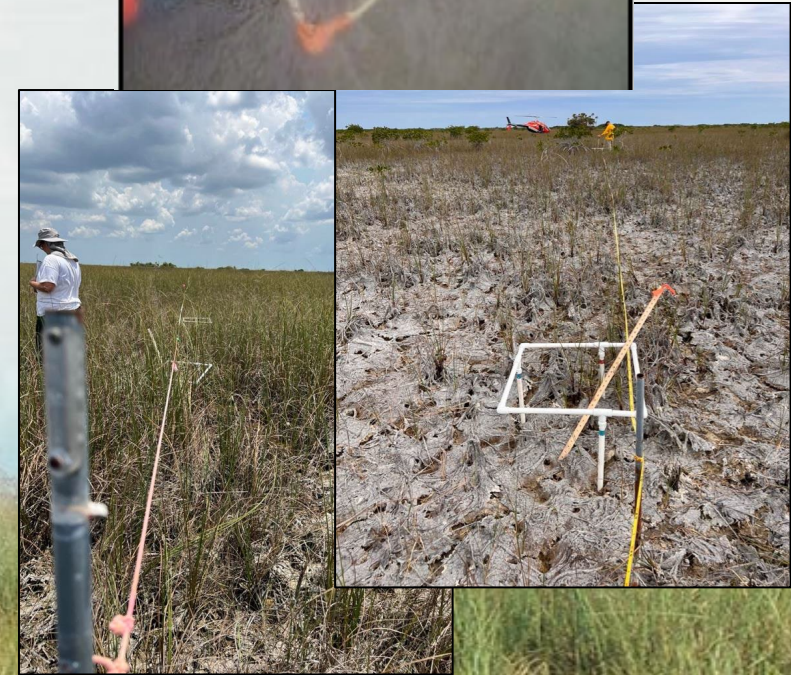
Goal: Enhance Economic Values and Social Well-Being

- Increase availability of fresh water (ag, municipal and industrial)
- Reduce flood damages (ag/urban)
- Provide recreational and navigation opportunities
- Protect cultural and archeological resources and values



CERP MAP Objectives

- Establish pre-CERP reference state
- Provide the **assessment of the system-wide responses**
- **Detect unexpected responses** of the ecosystem to changes in stressors, resulting from CERP activities
- Support scientific investigations designed to **increase ecosystem understanding, establish cause and effect relationships, and interpret unanticipated results**



RECOVER FIVE YEAR PLAN FY22-26 (AS OF OCT 2022)

Charge/Product	FY22	FY23	FY24	FY25	FY26
Assessment					
MAP Summary					
MAP Evaluation					
MAP Update					
2024 RECOVER Report (System Status Report)					
Evaluation					
Interim Goals/Interim Targets					
Second Periodic CERP Update					
Planning & Integration					
Conceptual Ecological Model/Hypothesis Cluster Updates					
Adaptive Management					



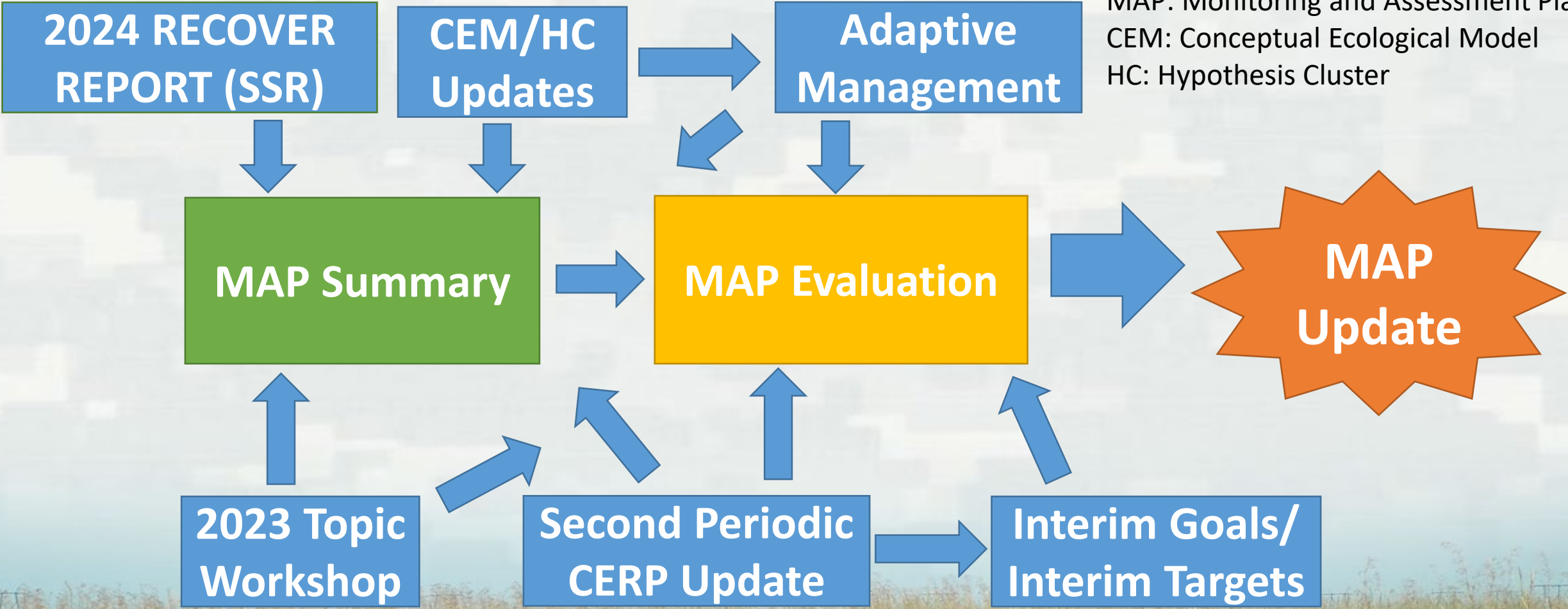
Acronym Definitions:

SSR: System Status Report

MAP: Monitoring and Assessment Plan

CEM: Conceptual Ecological Model

HC: Hypothesis Cluster



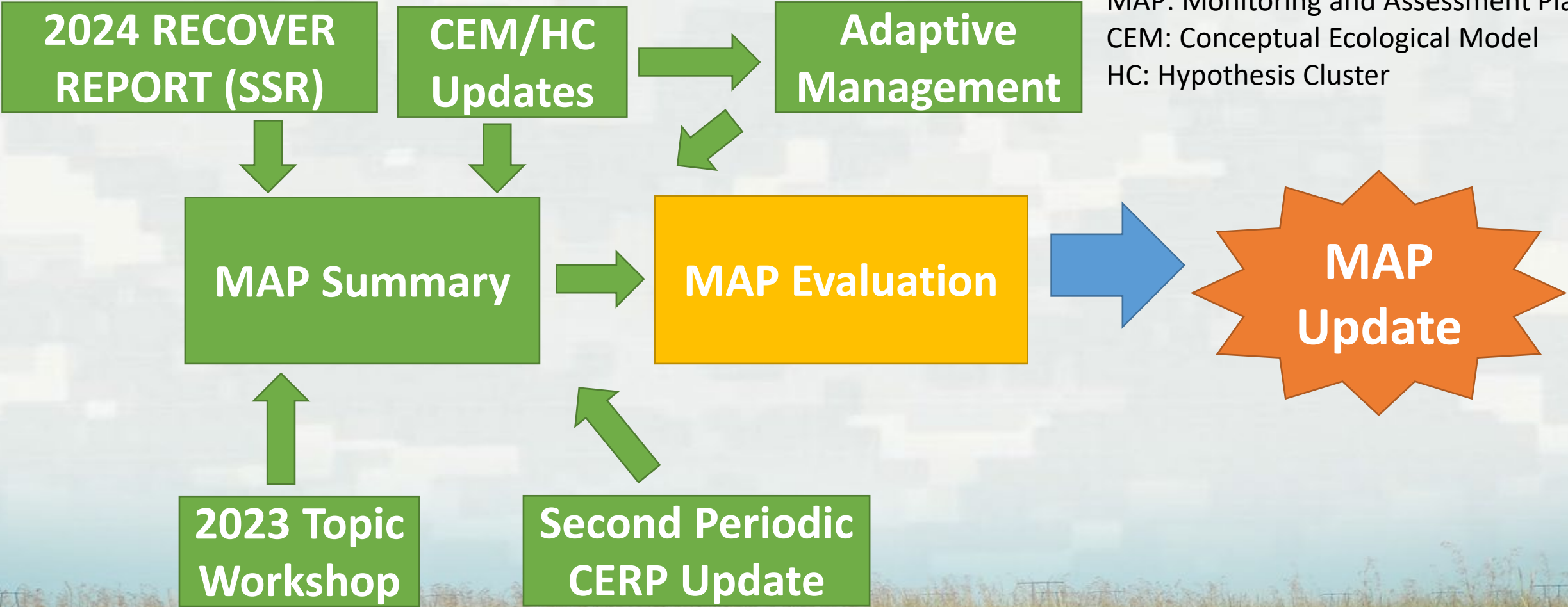
Acronym Definitions:

SSR: System Status Report

MAP: Monitoring and Assessment Plan

CEM: Conceptual Ecological Model

HC: Hypothesis Cluster



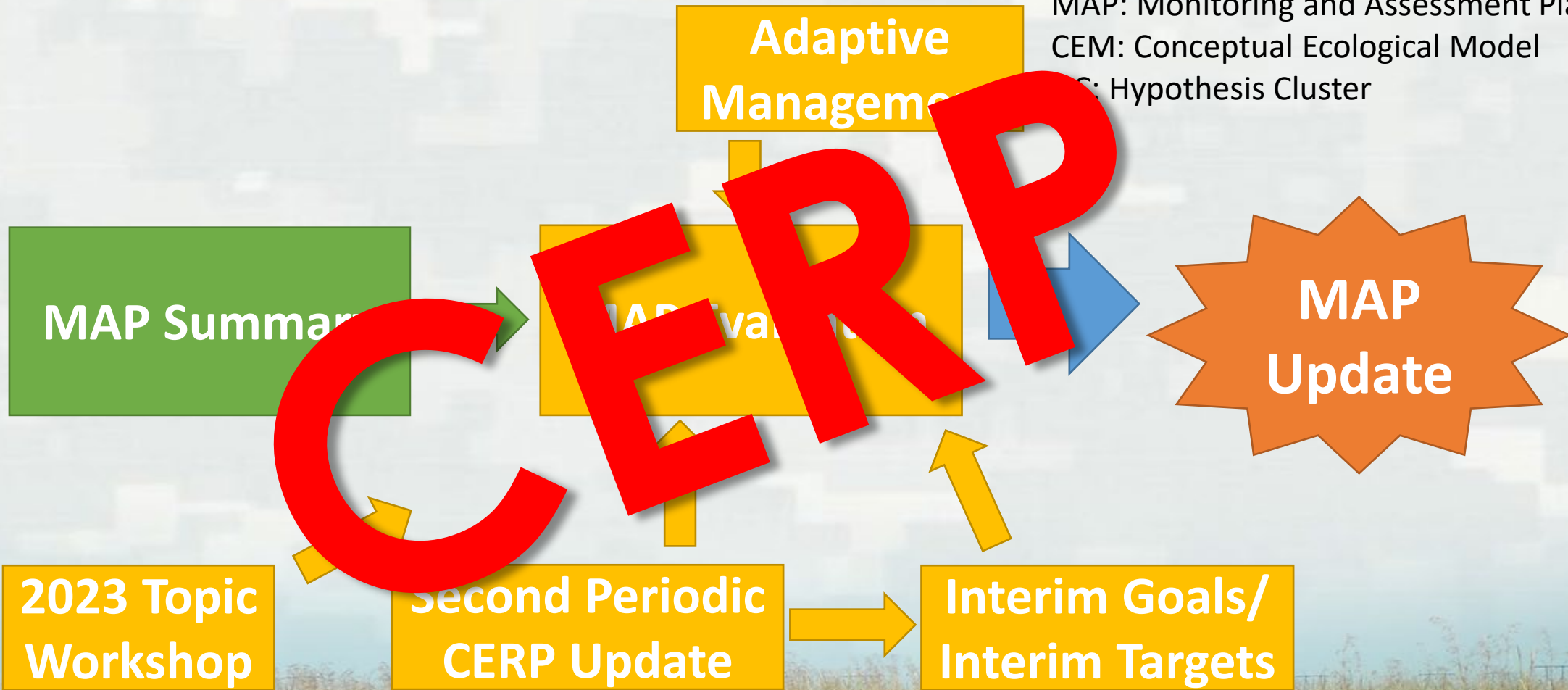
Acronym Definitions:

SSR: System Status Report

MAP: Monitoring and Assessment Plan

CEM: Conceptual Ecological Model

HC: Hypothesis Cluster



South Florida Science Plan

- A science plan is a set of specific activities that can help to guide the investment and application of resources across multiple agencies to fill knowledge gaps that are critical for restoration decision-making
- It identifies prioritized science actions that are feasible to implement and perform
- The committee envisions a consolidated list of high priority science actions, including:
 - Model development
 - Targeted data collection
 - Data analysis
 - Research and synthesis

SCG charged with development of the South Florida Science Plan

Charge/Product	FY 22	FY 23	FY 24	FY 25	FY 26
MAP Summary					
MAP Evaluation					
MAP Update					
2024 RECOVER Report (SSR)					
Interim Goals/Interim Targets					
Second Periodic CERP Update					
CEM/HC Updates					
Adaptive Management					

Science Enterprise "Ecosystem"



Key Takeaways

- SCG charged with developing a Science Plan
- RECOVER is working on several tasks applicable to the Science Plan
- RECOVER is still resource-challenged
- Support to RECOVER tasks will also benefit SCG's advancements towards developing a Science Plan.

Contact Information

RECOVER Program Managers:

Gina Paduano Ralph - gina.p.ralph@usace.army.mil

Phyllis Klarman - pklarman@sfwmd.gov



THANK YOU

Contact Information:

Jenna May - Jenna.C.May@usace.army.mil

