

Program & Project Update

South Florida Ecosystem Restoration Task Force Working Group/ Science Coordination Group

March 20, 2024

Mindy Parrott
Principal Federal Policy Analyst
Ecosystem Restoration Division

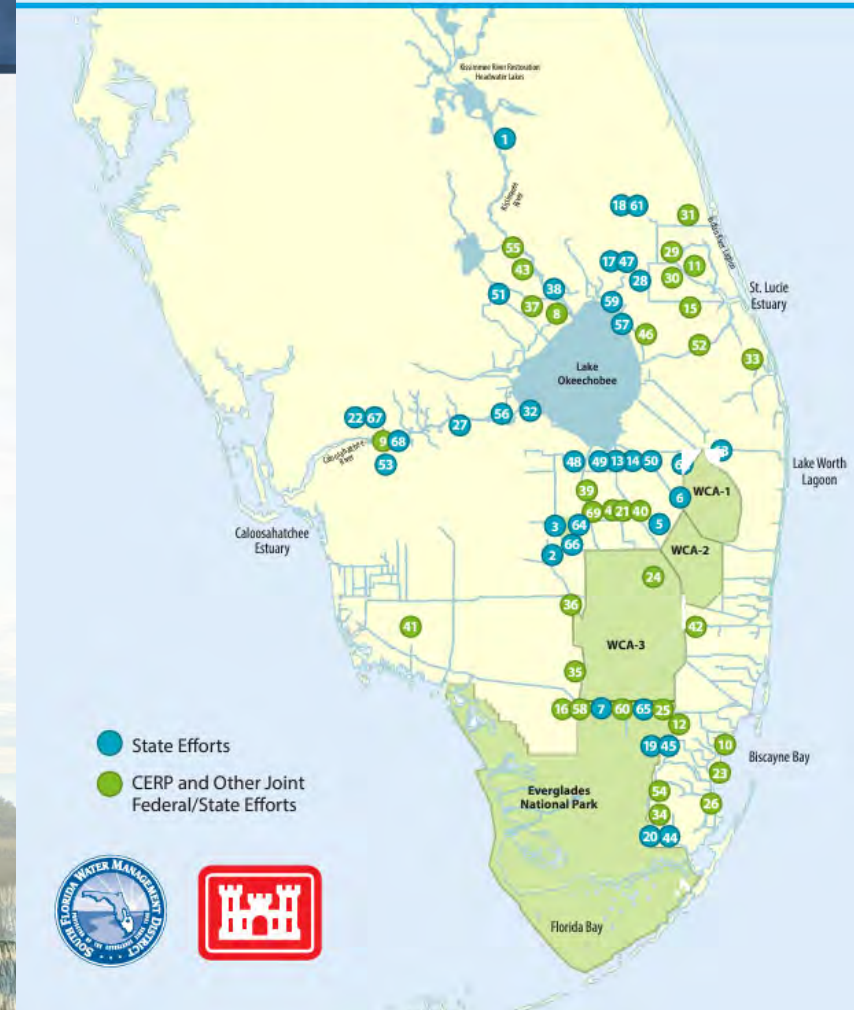
Ecosystem Restoration Programs

- Federal Projects
 - CERP & Foundation Projects
- State & Local Projects
 - Restoration Strategies
 - Northern Everglades and Estuaries Program
 - Dispersed Water Management
 - Local Project Grants

■ 2024 SFER:

<https://www.sfwmd.gov/science-data/scientific-publications-sfer>

EVERGLADES RESTORATION PROJECTS



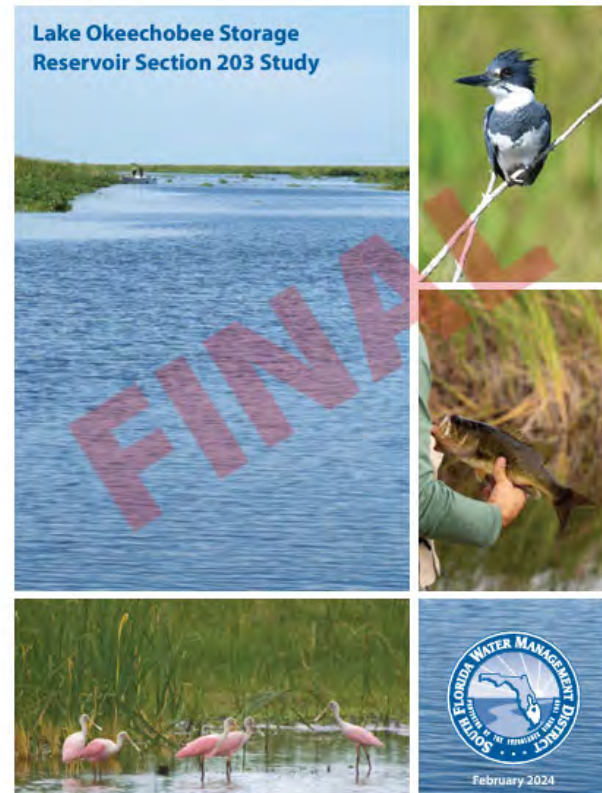
2024

- FY24: \$668M for Everglades Restoration, \$574M for CERP
- FY25: \$740M for Everglades Restoration, \$664M for CERP
- Complete CEPP construction:
 - Everglades Agricultural Area (EAA) STA cells
 - New Water Seepage Barrier (5 miles)
 - CEPP North S-620
- Begin construction on 5 CERP project features
- Complete LOCAR and WERP planning studies for inclusion in the Water Resources Development Act of 2024

Expediting Northern Storage - LOCAR

- SFWMD prepared a Feasibility Study under Section 203 of the Water Resources Development Act. USACE prepared an EIS concurrent with the Feasibility Study.
- LOCAR is a 200,000 acre-feet above ground storage reservoir, Component A from the CERP ‘Yellow Book’
- Both were delivered to the Assistant Secretary of the Army for Civil Works on February 28, 2024, to be available for consideration by Congress in the Water Resources Development Act of 2024.

Lake Okeechobee Component A Reservoir (LOCAR)



Aquifer Storage & Recovery for Lake Okeechobee- LOWRP



Aquifer performance testing C-38

- ASR Construction Progress:
 - Completed Continuous Cores at C38S, L63N and L63S
 - Completed Test Wells 1 & 2 at C38S and C38N
 - Completed Aquifer Pump Tests for Test Wells at C38S and C38N
 - Design is underway for Demonstration Facility



Aquifer Storage & Recovery for Lake Okeechobee- LOWRP

➤ ASR Science Plan Update 2 (Fall 2024):

- Seismic Study/Report – Received September 2023
- FGCU and USGS Studies for Core Analyses – Received October/November 2023
- ERDC SOW Studies for WO Amendment – February 2024
- Aquifer Pump Test Reports – March 2024
- Ecological Studies for the 1st year of monitoring – April 2024



Lake Okeechobee Watershed



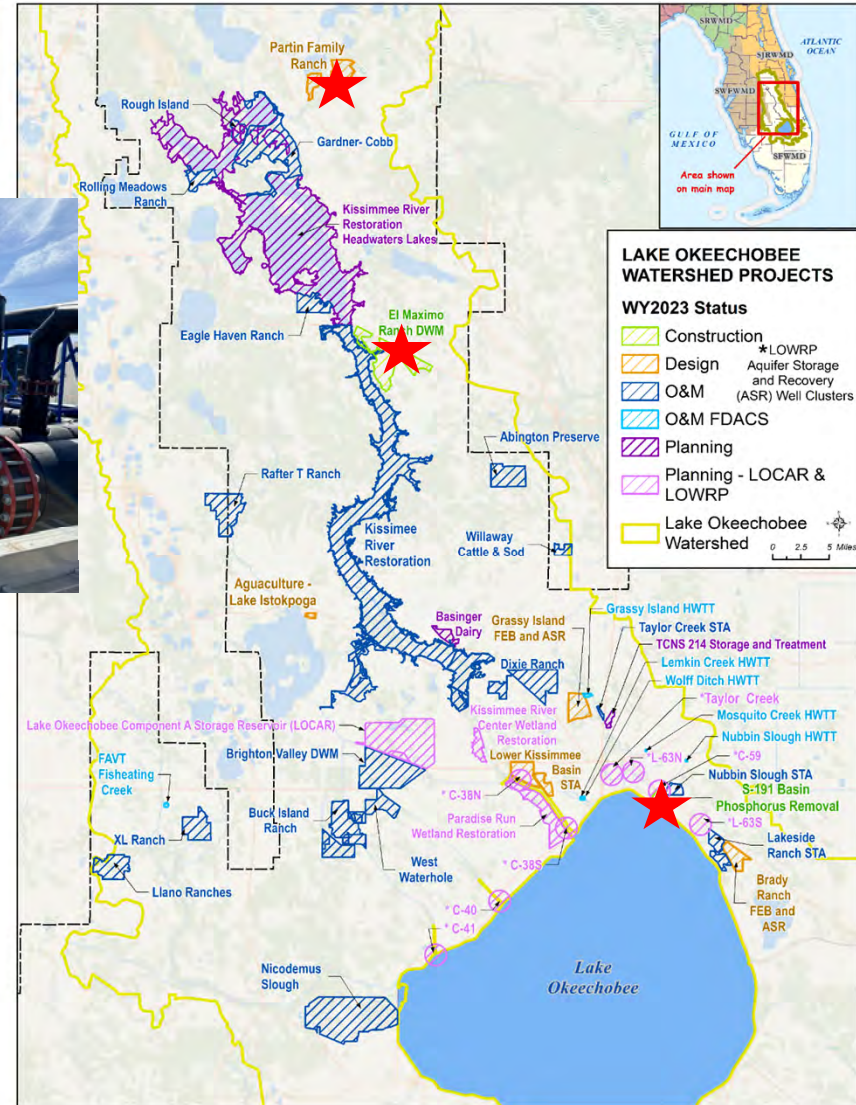
El Maximo Ranch



S-191 Innovative Technology



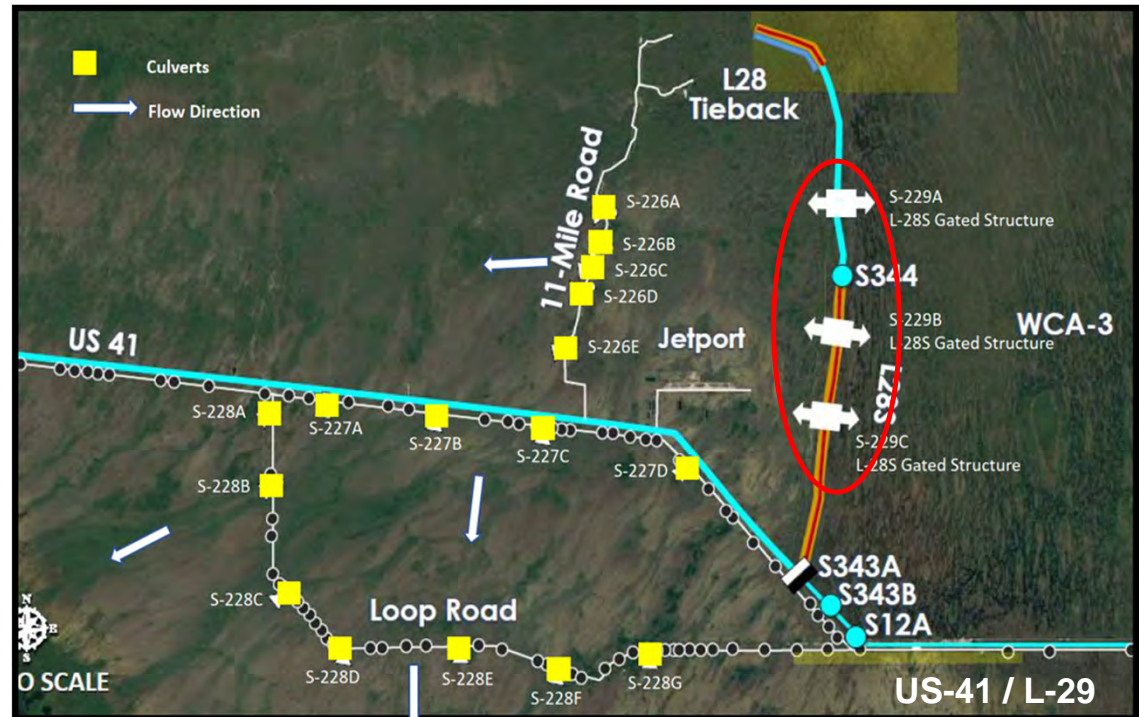
Partin Family Ranch



Western Everglades Restoration Project- Region 4

- Pre- Partnership Credit Agreement (PPCA) for Region 4
- In December, Governing Board authorized contract to build 3 culverts in the L-28S levee
- SFWMD is also designing additional culverts under Tamiami Trail, Loop Road and 11 Mile Road
 - Additional modeling and data collection to support design
 - Coordination with FDOT

RJO



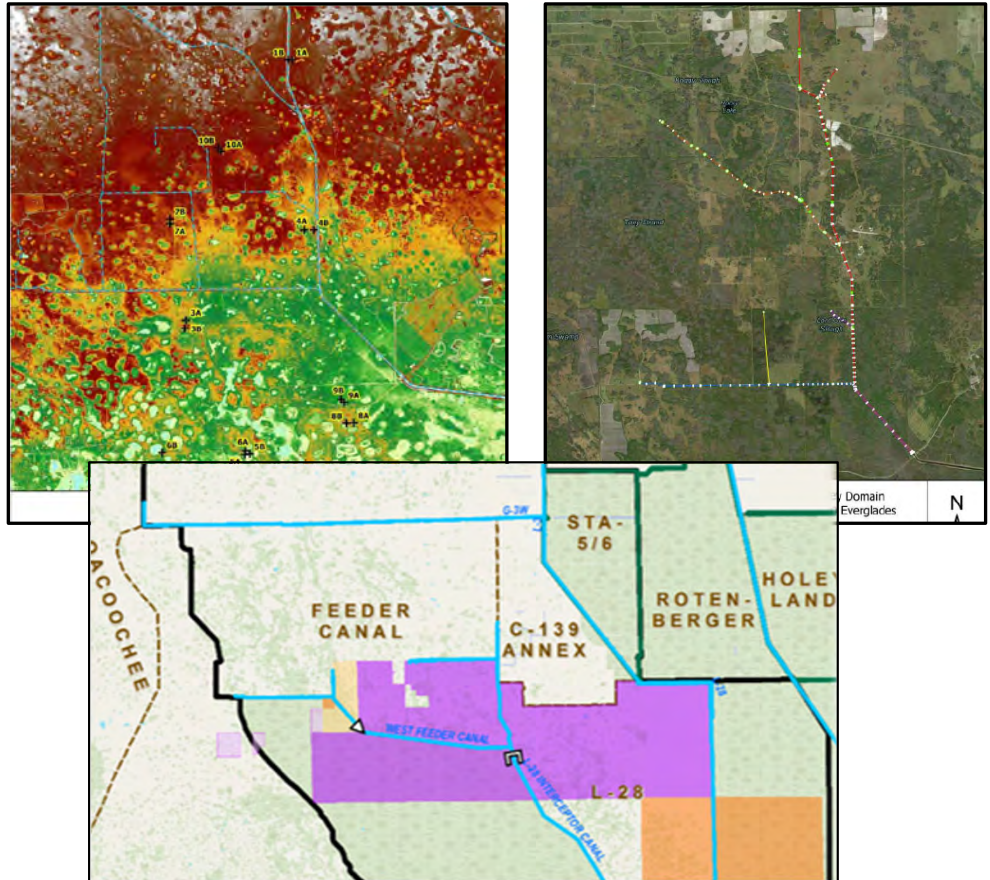
Western Everglades Restoration Project- Region 2

WERP Pre- Design Engineering

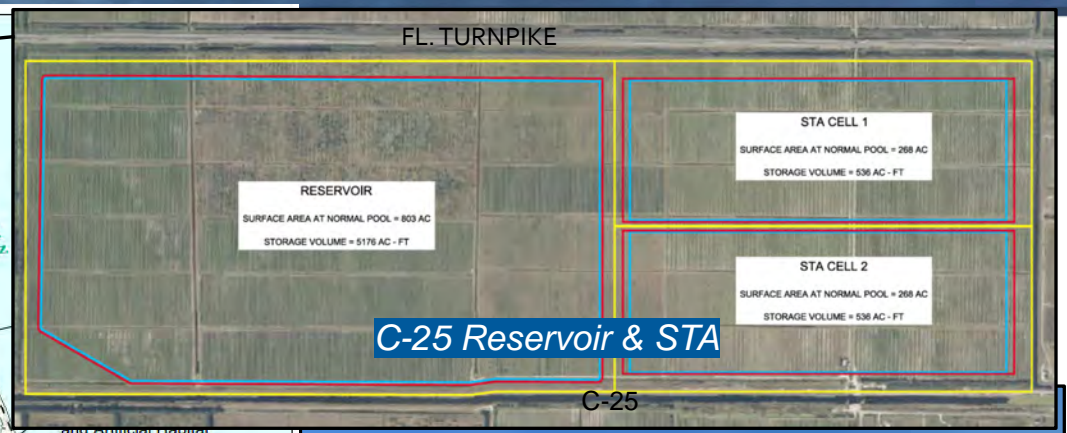
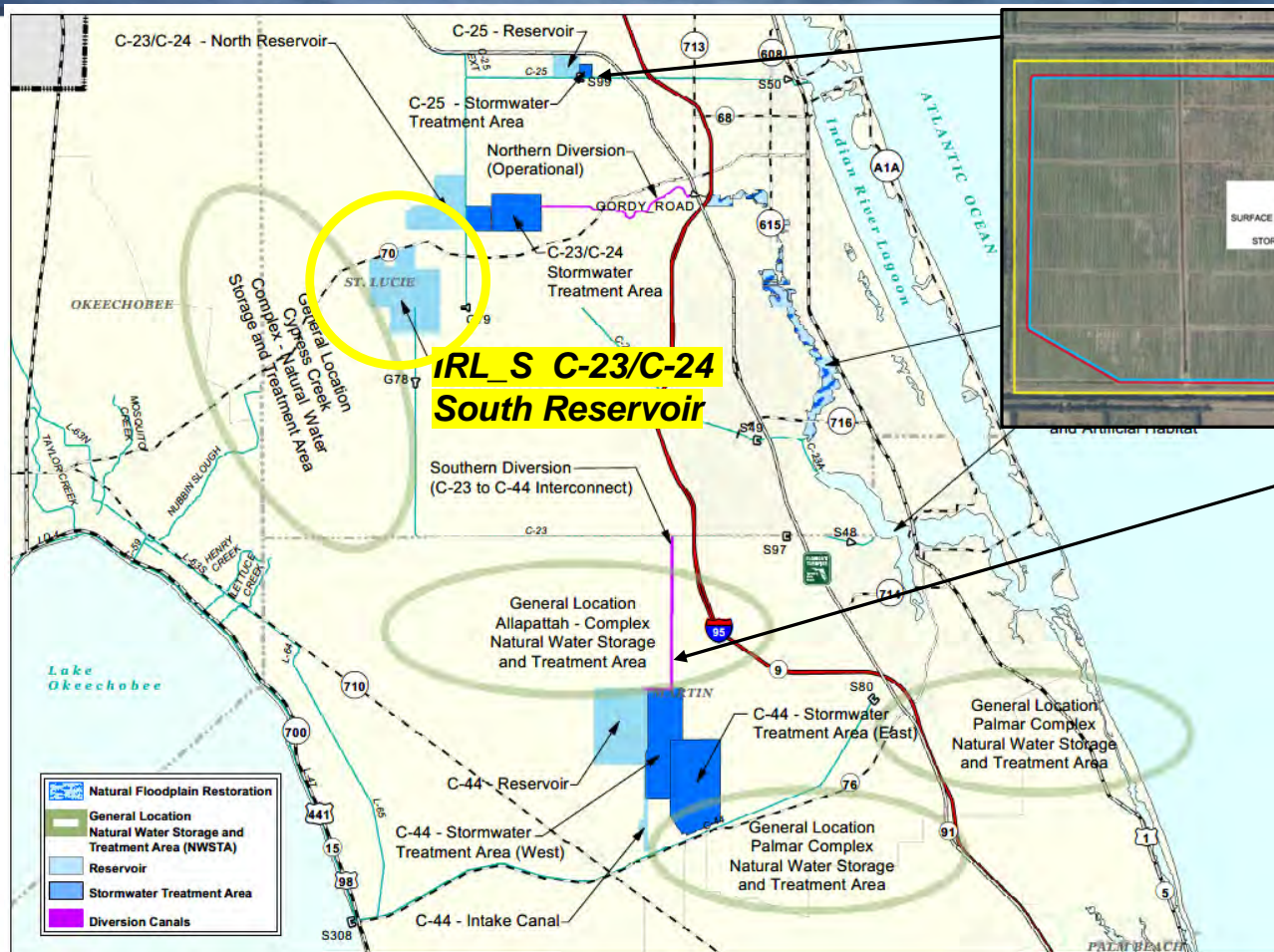
- Survey data collection and ground truthing
- Refined model development
- Engage stakeholders on project effects as additional data is available

Feeder Basin Water Quality Program

- Precursor for WERP
- Collaborate with landowners
- Initiate WQ data collection
- Conceptual project planning



Restoring the Indian River Lagoon and St. Lucie River



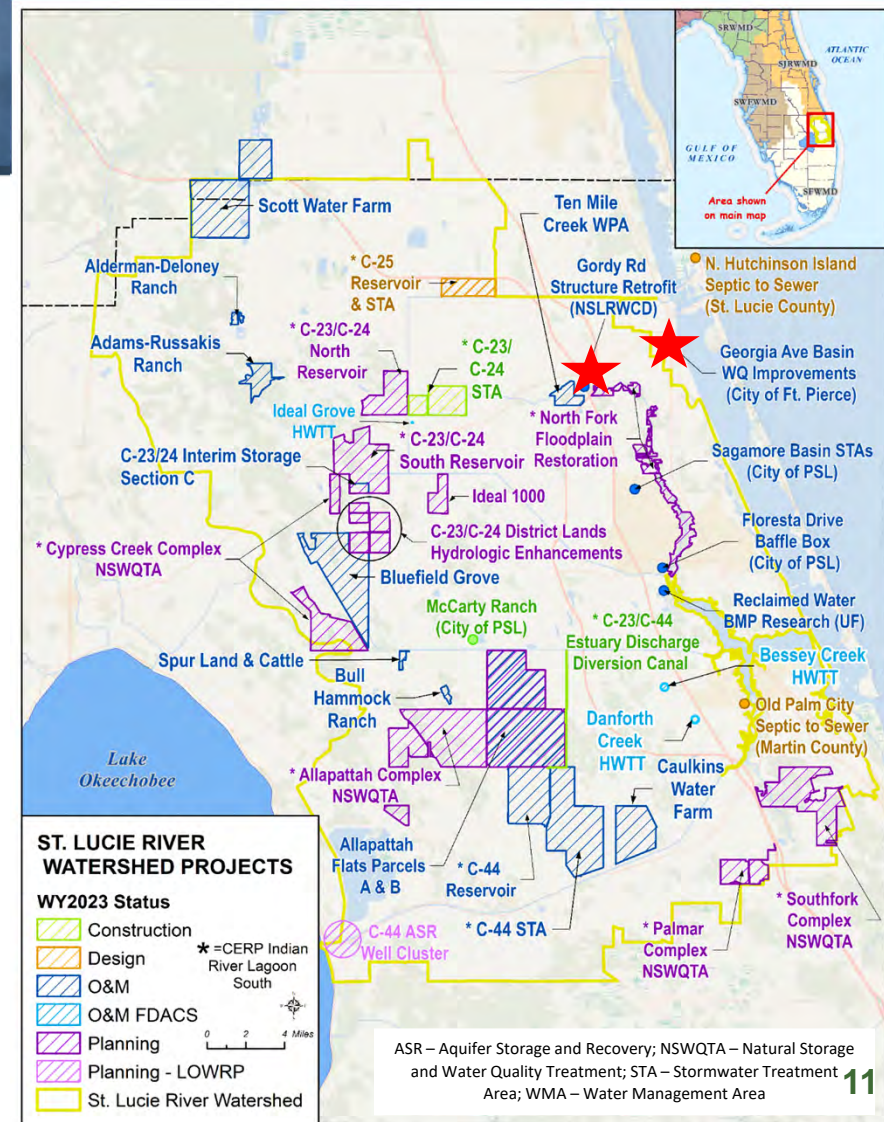
St. Lucie River Watershed



City of Fort Pierce – Georgia Ave. Basin Water Quality Improvements



NSLWCD Gordy Structures Retrofit

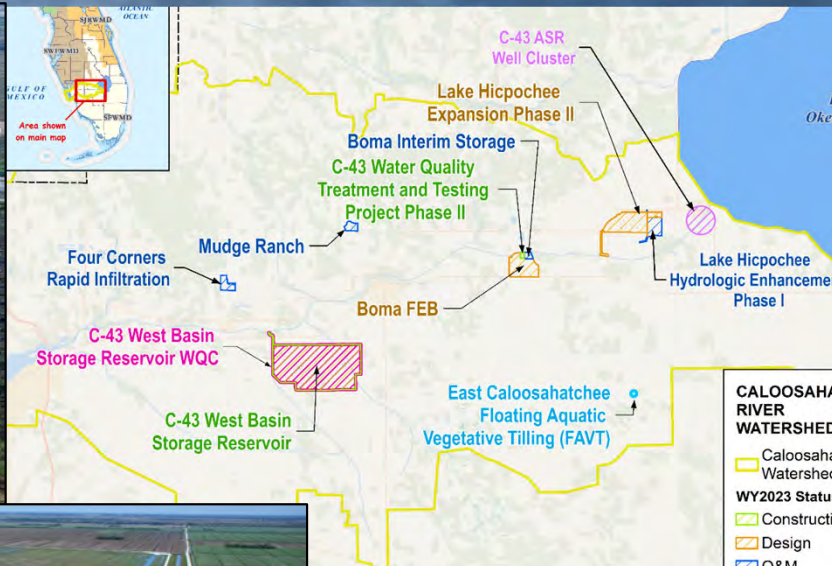


SOUTH FLORIDA WATER MANAGEMENT DISTRICT

Caloosahatchee (C-43) Reservoir

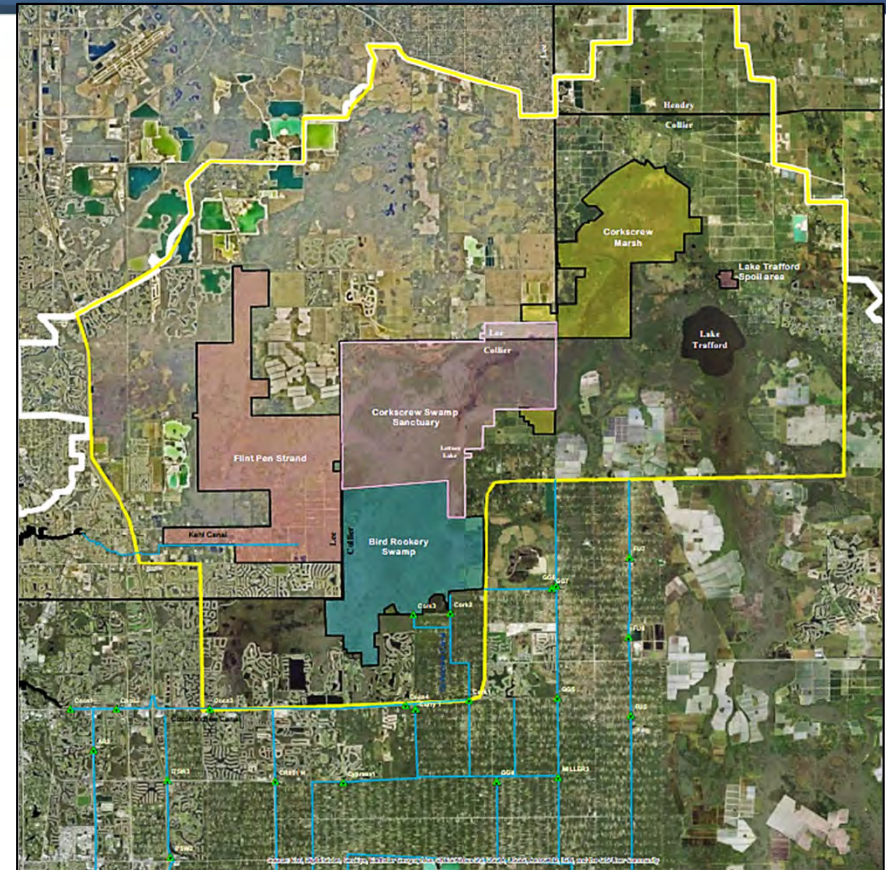


Caloosahatchee River Watershed



Big Cypress Basin- Corkscrew Watershed Initiative

- In the last 20 years, data shows reduced hydroperiods and increased recession rates in the Corkscrew Swamp Sanctuary
- The CWI is a 3-year public planning study to develop a comprehensive strategy for ecological restoration of the Corkscrew system while reducing flood risk downstream, without adversely affecting water supply.
- The study will identify, evaluate and select a series of projects and develop conceptual plans for future implementation by the partner agencies.



Central Everglades - EAA Reservoir and STA



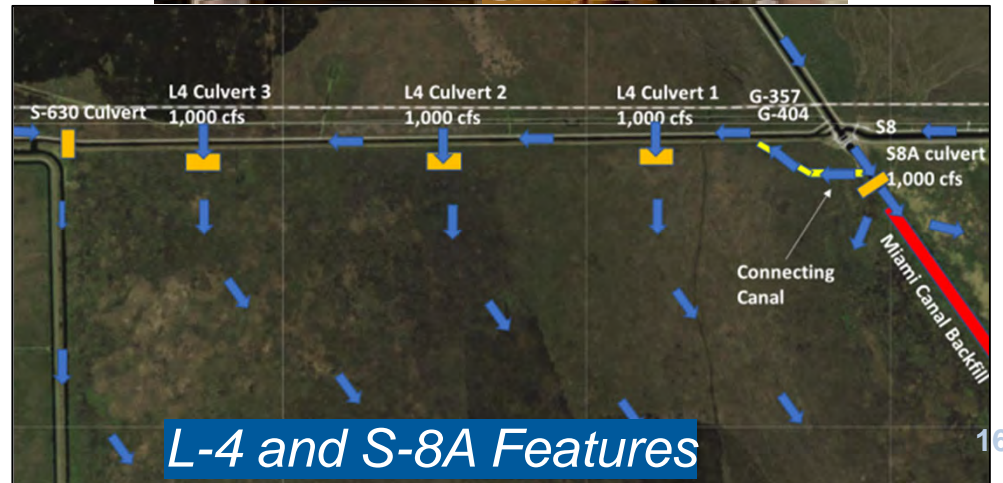
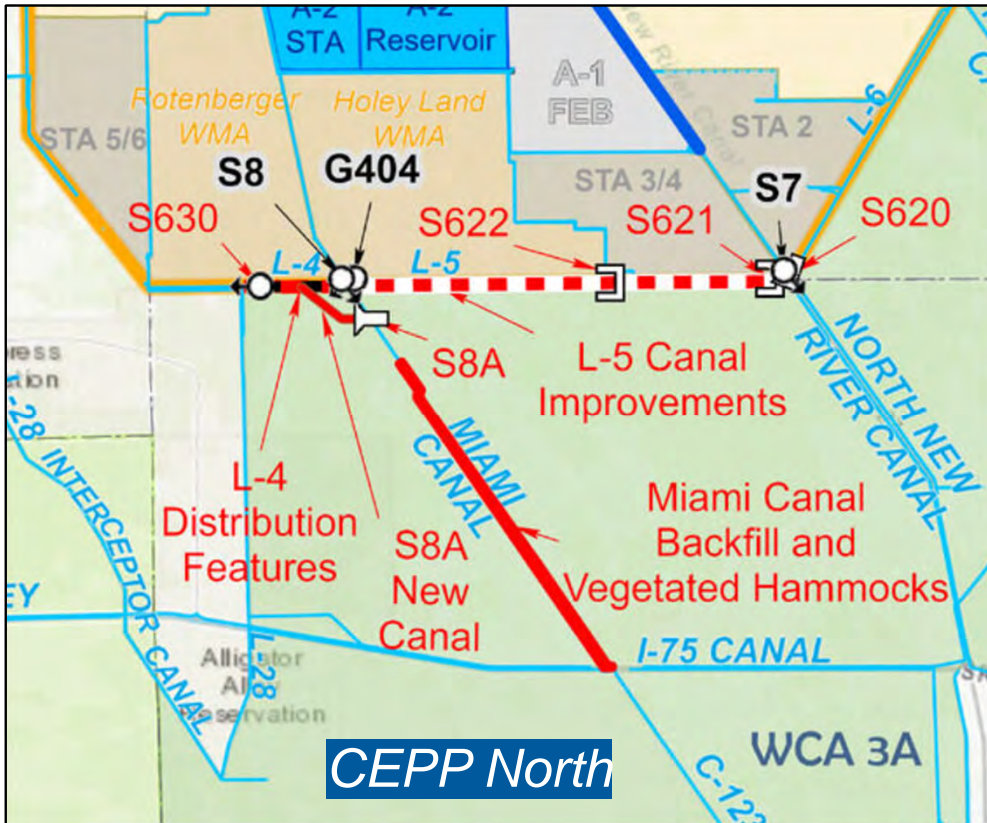
Canal Conveyance Improvements

- North New River Canal- Contract Awarded December 2023
- Miami Canal Phase 1- Final Design, award summer 2024
- Miami Canal Phase 2- Intermediate Design, award early 2025

CEPP North



Construction at S-620

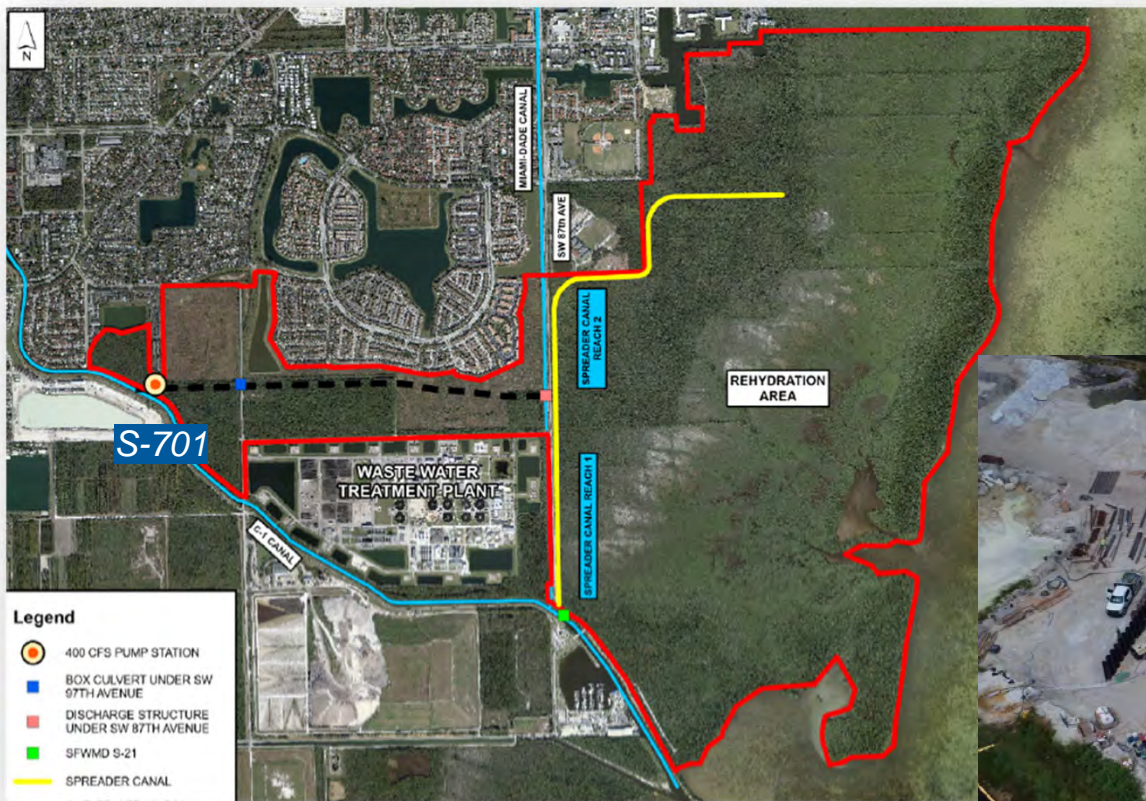


CEPP New Water Seepage Barrier Wall



Work is complete, look for a ribbon cutting event in April!

Restoring Water Flow to Biscayne Bay



BBCW Cutler Flowway Contracts 6A & 6B

sfwmd.gov



BBCW S-701
12.04.2023, 15:26:48

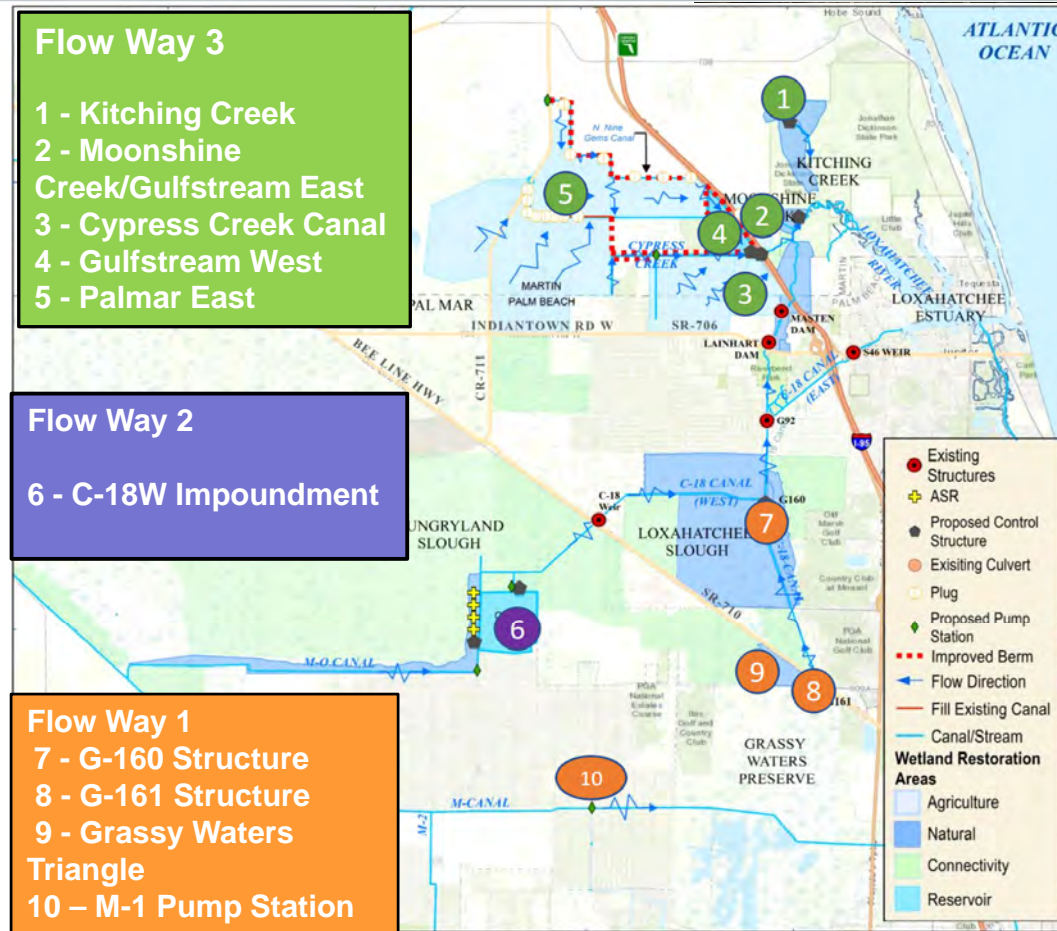
Restoring the Loxahatchee River Watershed

Components 1, 2 and 6 are in design:

- Vegetation Management including biocontrol
- Survey & Geotech
- Modeling underway



Vegetation management- Gulf Stream East



Flow Way 3
 1 - Kitching Creek
 2 - Moonshine Creek/Gulfstream East
 3 - Cypress Creek Canal
 4 - Gulfstream West
 5 - Palmar East

Flow Way 2
 6 - C-18W Impoundment

Flow Way 1
 7 - G-160 Structure
 8 - G-161 Structure
 9 - Grassy Waters Triangle
 10 - M-1 Pump Station

Restoration Strategies

C-139 Flow Equalization Basin



- 10 of 13 projects completed
 - STA-1W Expansion #2 and C-139 FEB projects are in final stages of construction
 - STA-5/6 Internal Improvements is in final stages of optimization
- Due date for all RS projects is December 31, 2025
- 13 of 21 RS Science Plan studies are completed, 8 studies to be completed in 2024



*Pumphouse
G-550*

Questions?

mparrott@sfwmd.gov