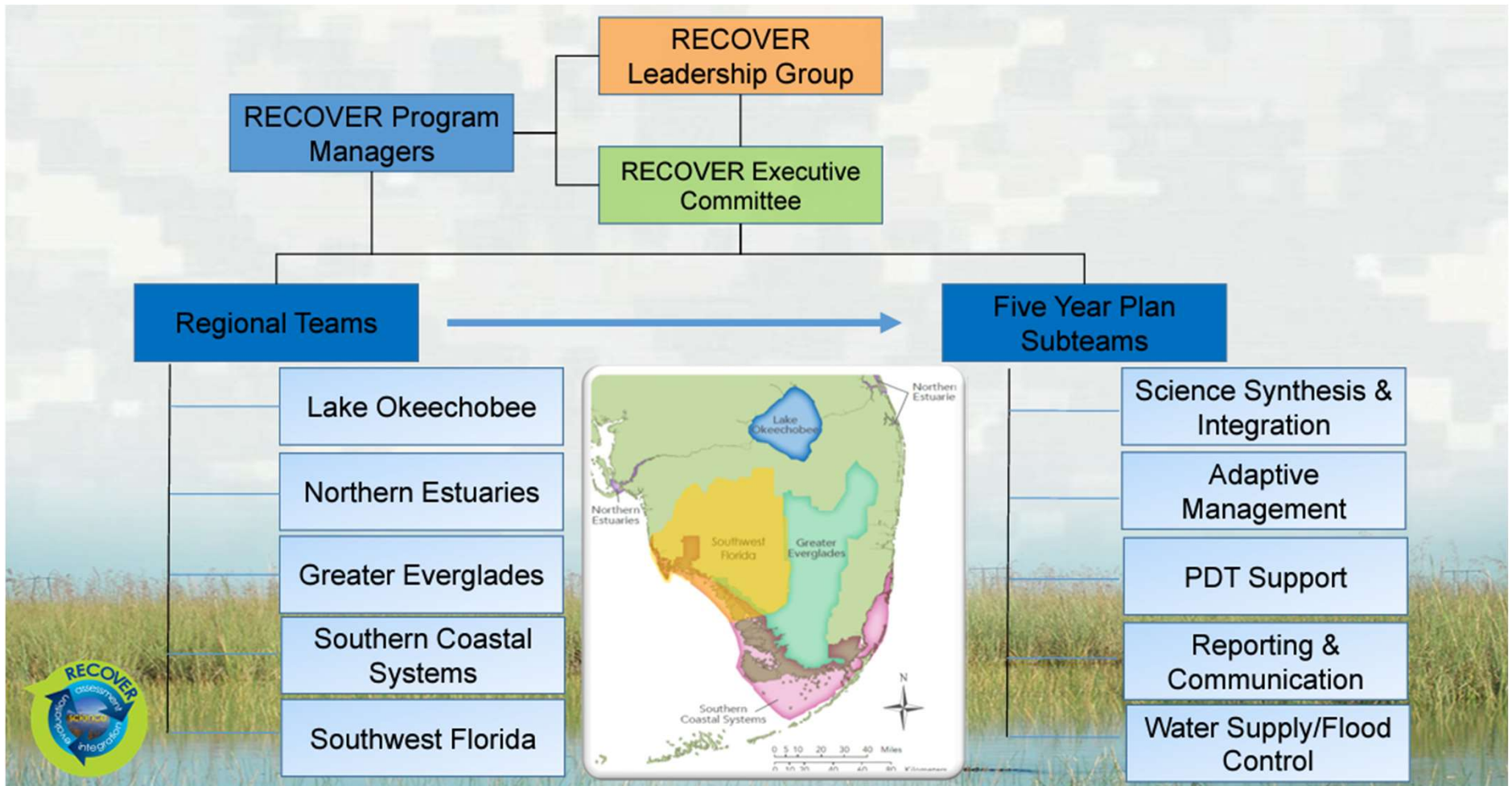
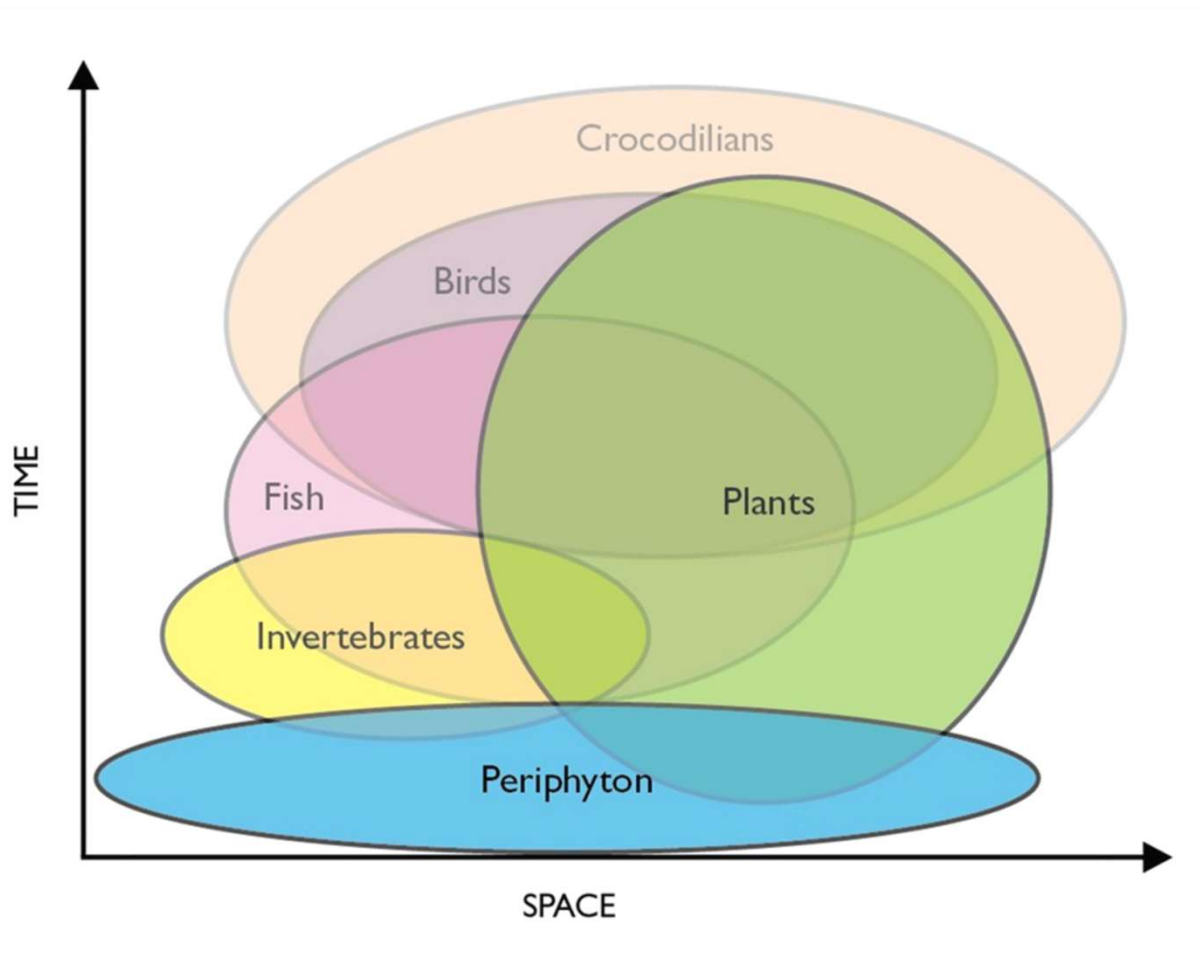


RECOVER - REStoration, COordination, and VERification



Multi-agency team of scientists, modelers, planners, and resource specialists, conducts scientific and technical evaluations.

Ecosystem Indicators - Track Responses over Space and Time



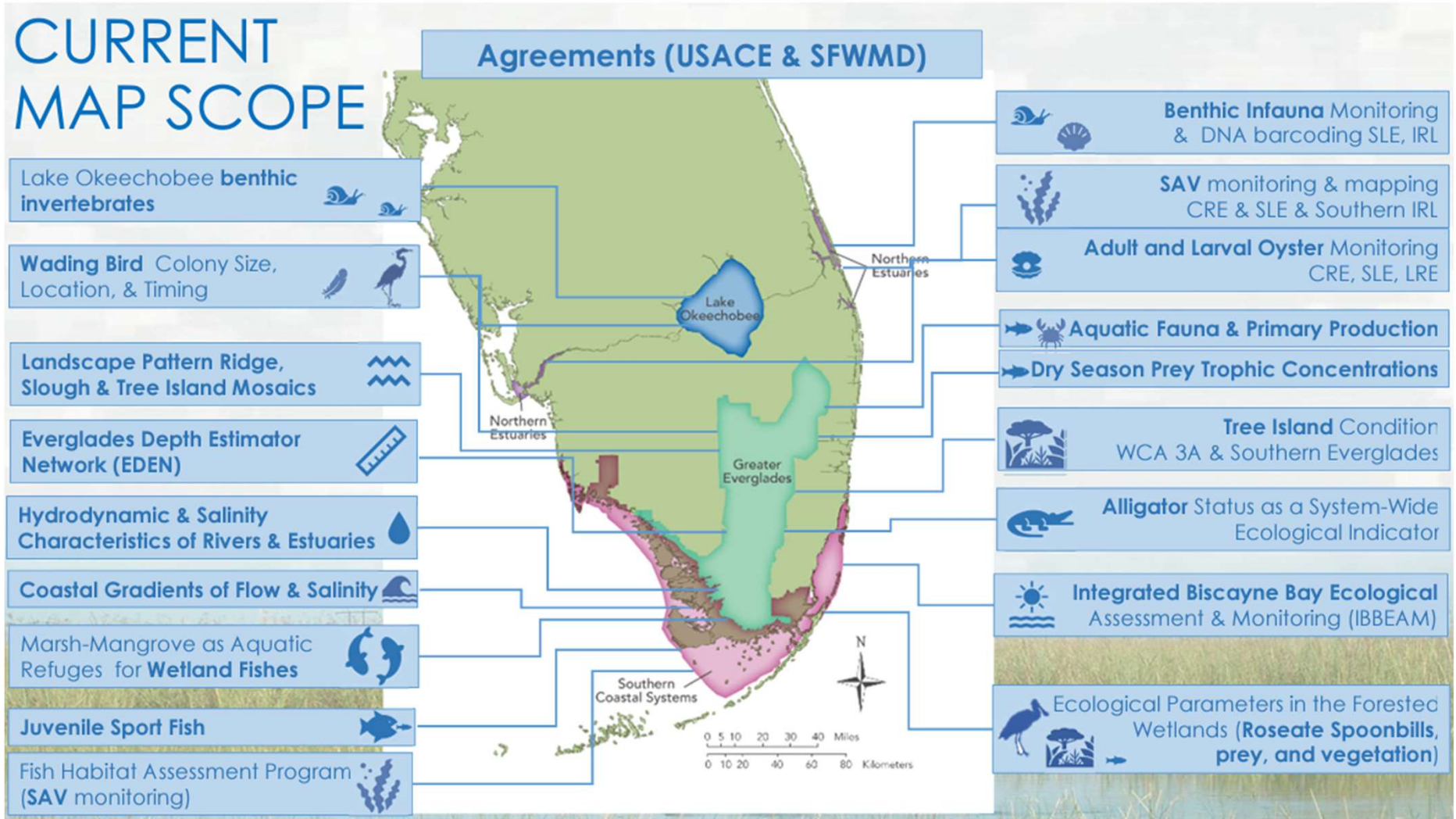
Ecological Indicators – should cover the full range of expected responses of native flora and fauna.

Examples:

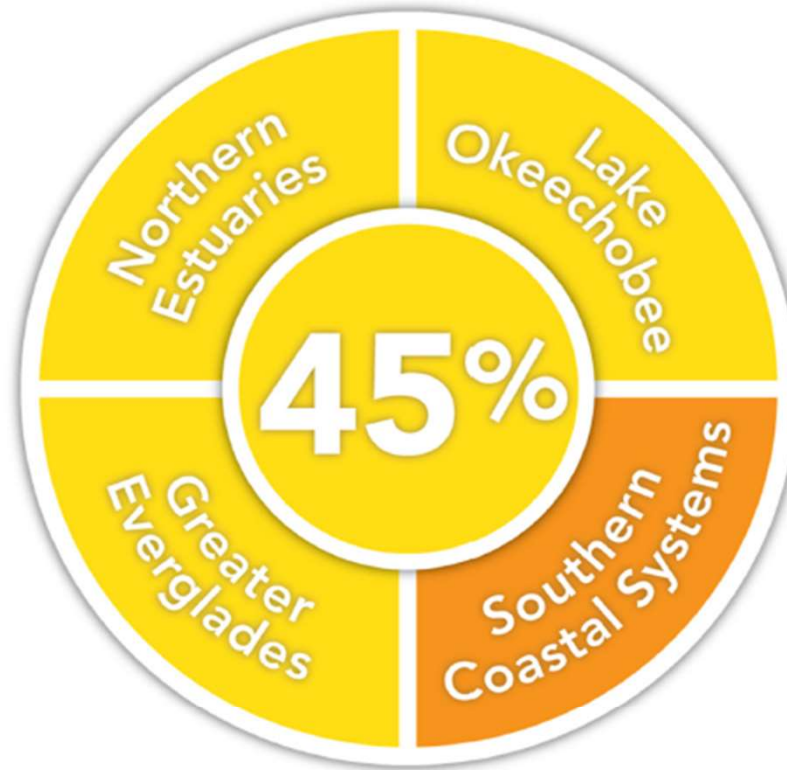
Periphyton responds to changes in hydrology and water quality very rapidly, at both small and large spatial scales.

Crocodilians respond to changes in hydrology and water quality more slowly at small to large spatial scales.

RECOVER - Monitoring and Assessment Plan (MAP)



RECOVER - Report Card (2019 System Status Report)



Based on Assessments for the 2012-2017 Period.

0–20% Very poor	20–40% Poor	40–60% Fair	60–80% Good	80–100% Very good
These regions or indicators are extremely vulnerable and are unable to provide ecosystem function. Essential ecological functions are extremely degraded and unsustainable.	These regions or indicators are highly vulnerable and are struggling to provide ecosystem function. Essential ecological functions are highly degraded and unsustainable.	These regions or indicators are vulnerable to further ecological degradation and provide minimal ecosystem function. Essential ecological functions are degraded and unsustainable.	These regions or indicators are slightly vulnerable, but are maintaining ecosystem function. Essential ecological functions are somewhat sustainable.	These regions or indicators are minimally vulnerable and are maintaining high ecosystem function. Essential ecological functions are sustainable.

Systemwide Ecological Indicators (DOI 2022)

	WY 2018	WY 2019	WY 2020	WY 2021	WY 2022	Trend
Invasive Plants	Y	Y	C	Y	Y	Stable
Lake Okeechobee Nearshore Zone Submerged Aquatic Vegetation	R	R	R	R	R	Decreasing
Eastern Oysters- Modified (Northern Estuaries only)	R	R	R	R	R	Stable
Crocodylians (American Alligators & Crocodiles)- Modified (LNWR, WCA-3, ENP, Biscayne Bay Complex)	R	R	C	R	R	Stable
Fish & Macroinvertebrates (WCA-3 and ENP only)	R	R	R	R	R	Stable
Periphyton	Y	Y	Y	Y	C	Stable
Wading Birds (White Ibis & Wood Stork)	Y	R	R	R	C	Increasing
Southern Coastal Systems Phytoplankton Blooms- Modified (no southwest shelf)	R	Y	Y	Y	Y	Stable
Florida Bay Submersed Aquatic Vegetation	Y	Y	Y	Y	Y	Stable
Juvenile Pink Shrimp- Modified (no renewed sampling)	B	B	B	B	B	
Wading Birds (Roseate Spoonbill)	R	Y	R	Y	R	Stable

R	Substantial deviations from restoration targets creating severe negative condition that merits action. Well below restoration target.
Y	Current situation does not meet restoration targets and may require additional restoration action. Below restoration target.
G	Situation is within the range expected for a healthy ecosystem within the natural variability of rainfall. Continuation of management and monitoring effort is essential to maintain and be able to assess "green" status. Meets restoration target.
B	No data or inadequate amount of data were collected due to reductions in funding.
C	Data analysis not complete or data not collected due to extenuating circumstances such as COVID 19 in 2020.