



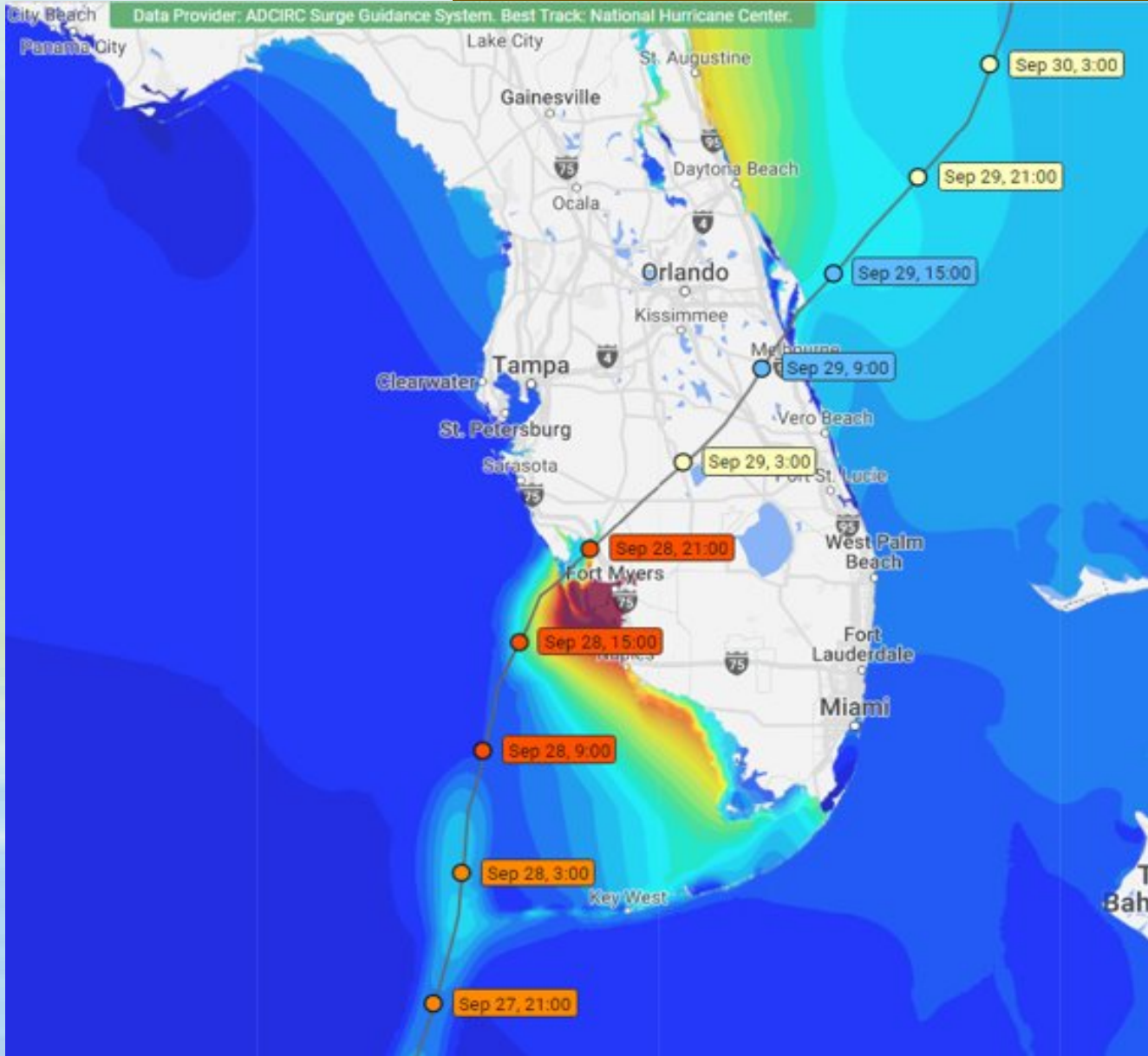
Post-Hurricane Ian Conditions



Lawrence Glenn
SCG Chair - SFWMD

Science Coordination Group – Hurricane Ian Workshop
December 7, 2022

Hurricane Ian



Tropical Cyclone Activity

- NHC Storm Track
- wind speed categories: TD, TS, H1, H2, H3, H4, H5
- non-tropical wind
- outside model hindcast

Water Height above MSL

- Maximum Water Height

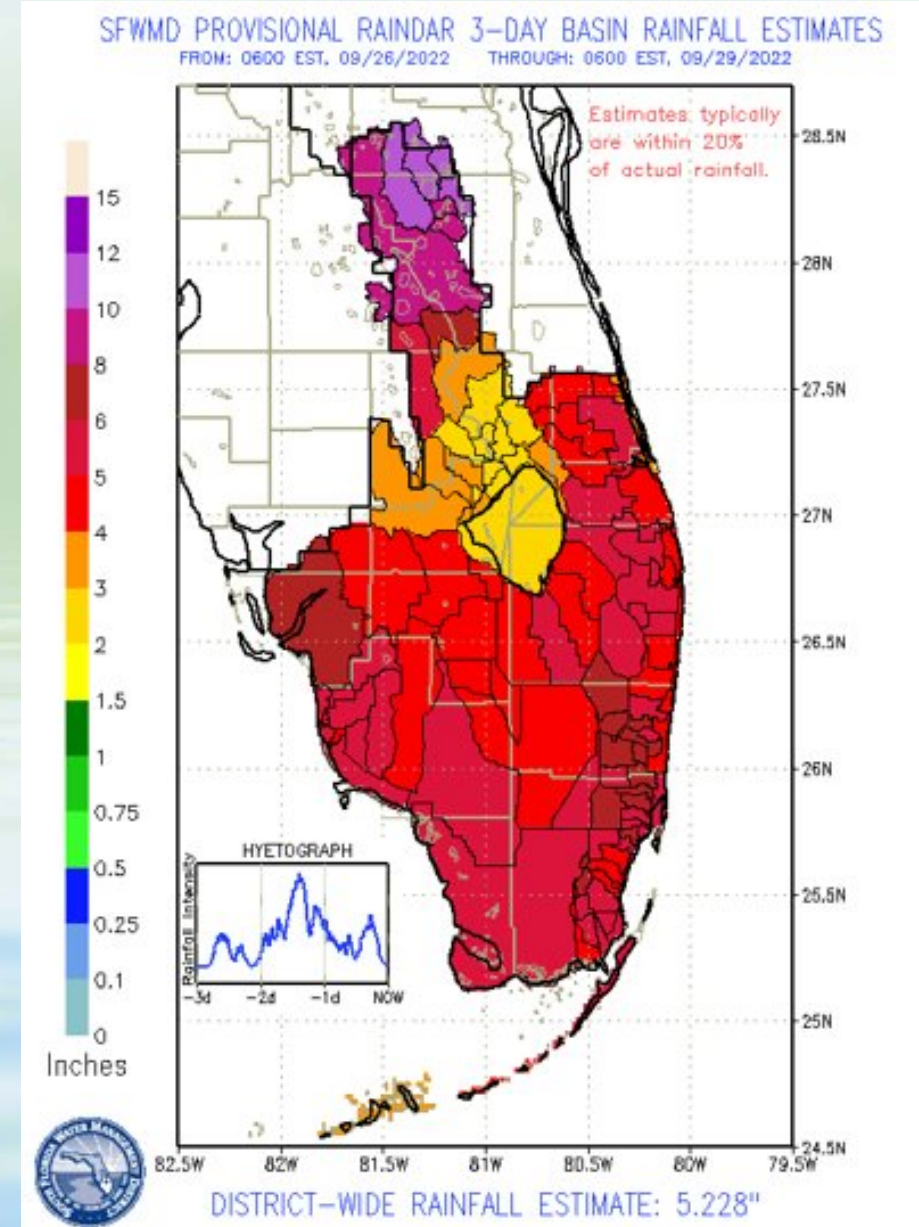
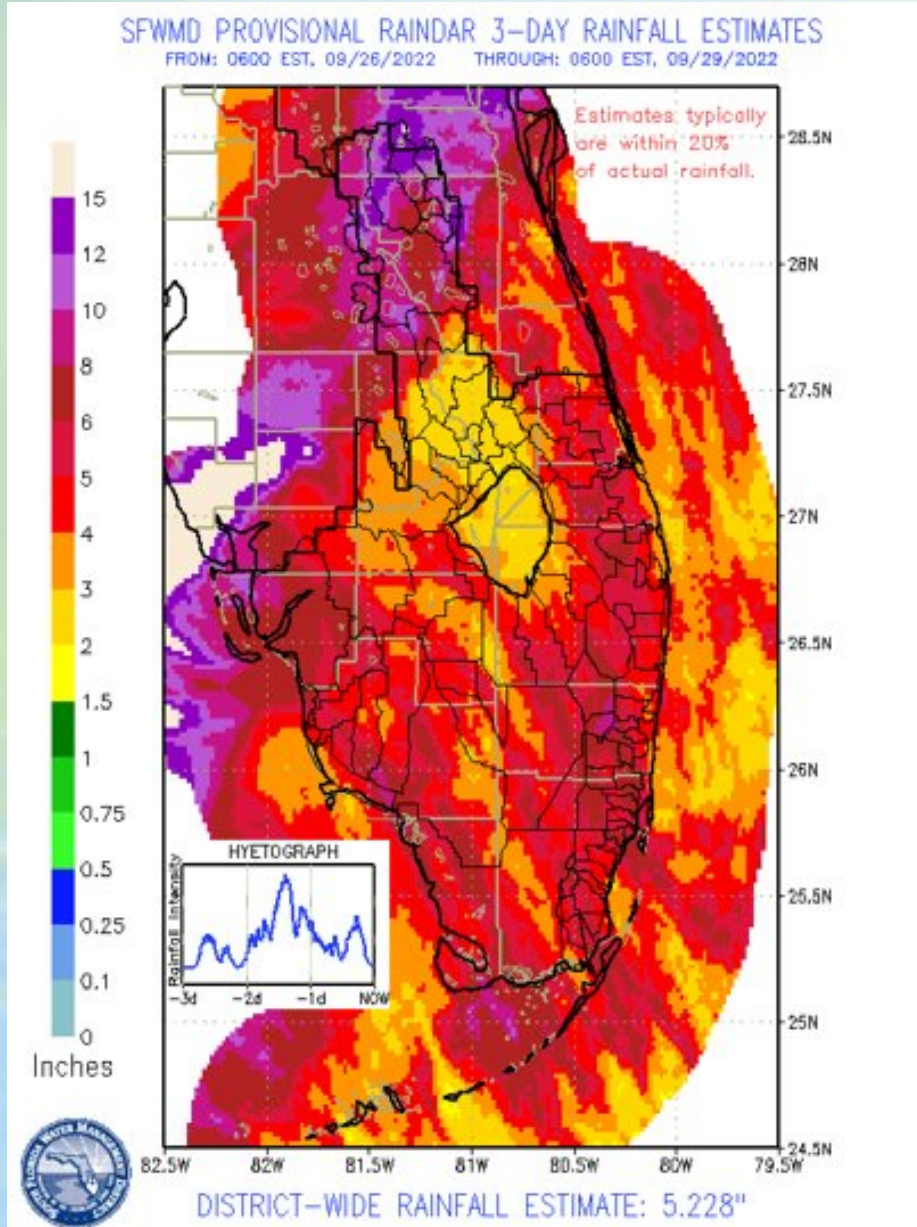
[ft] MSL

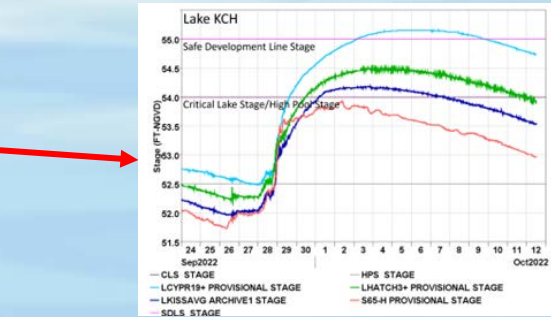
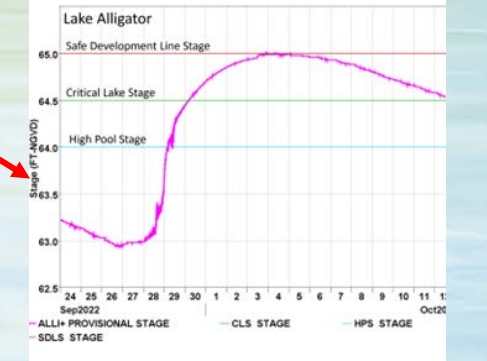
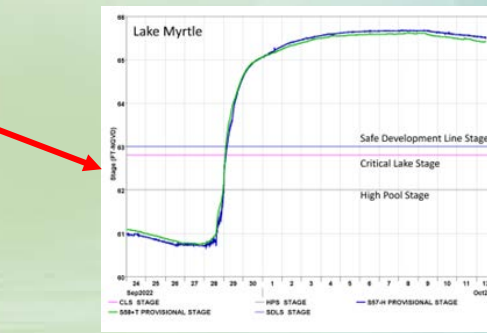
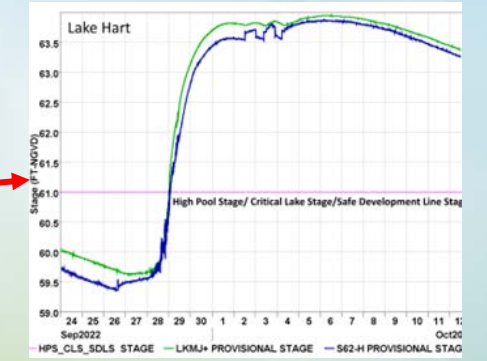
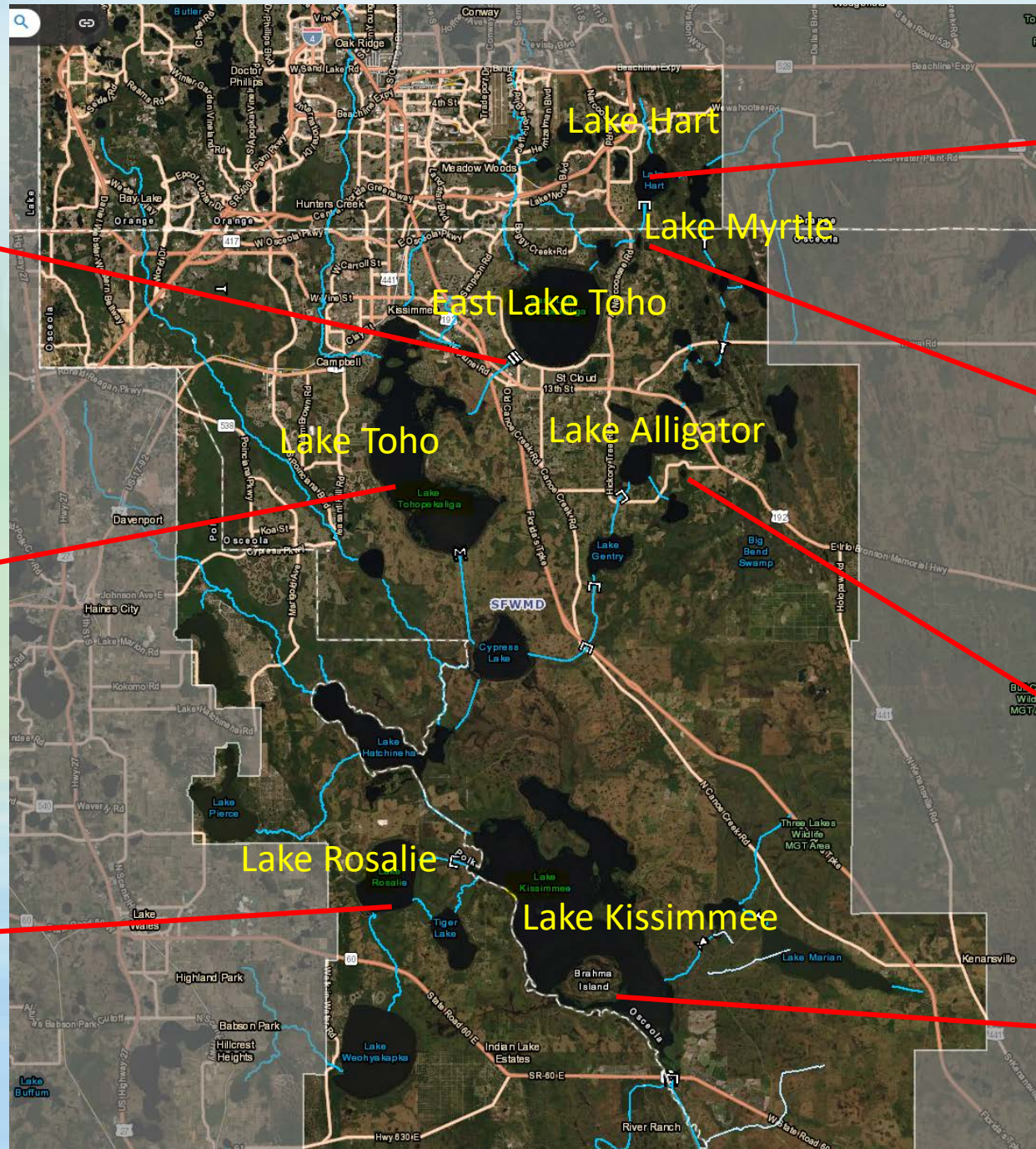
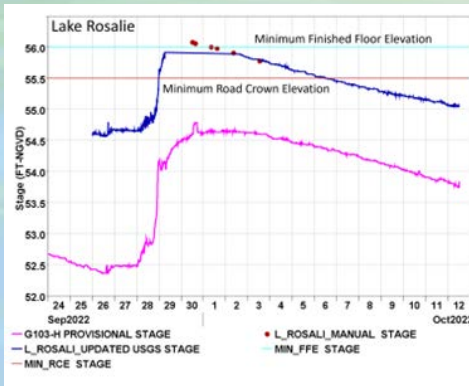
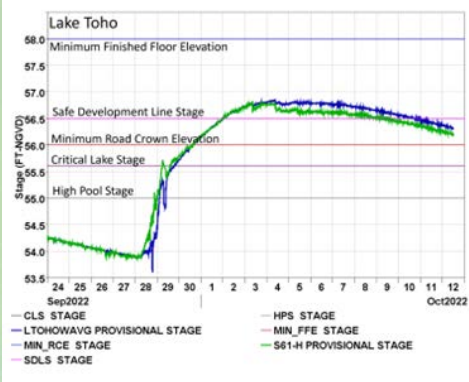
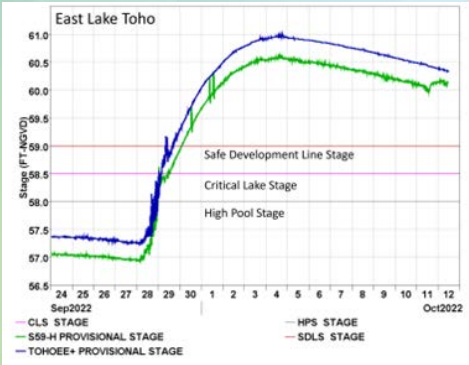
>10
9
8
7
6
5
4
3
2
1
0

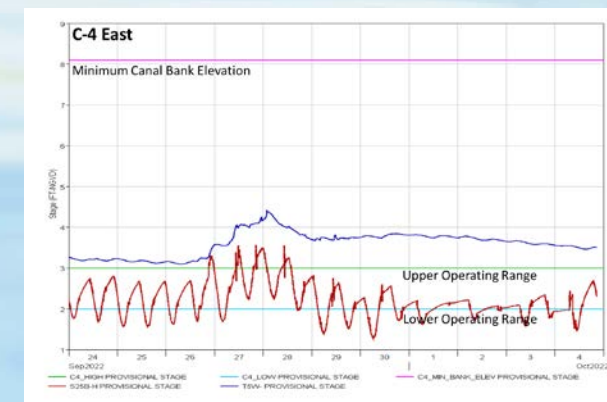
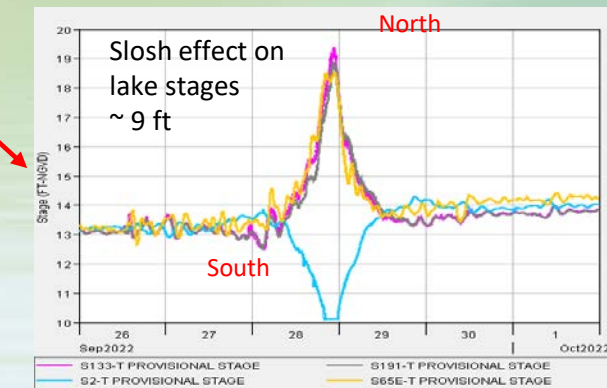
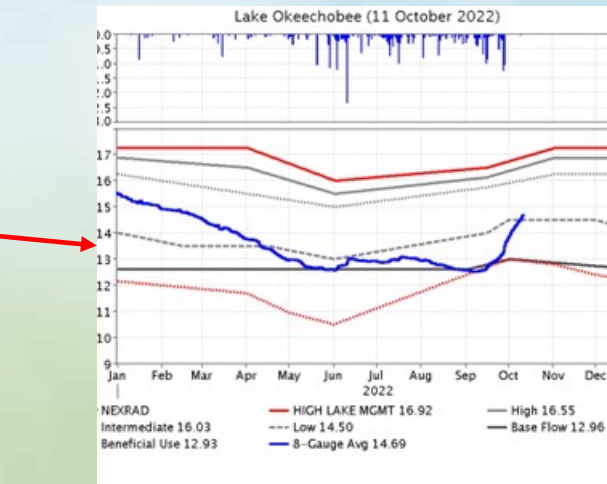
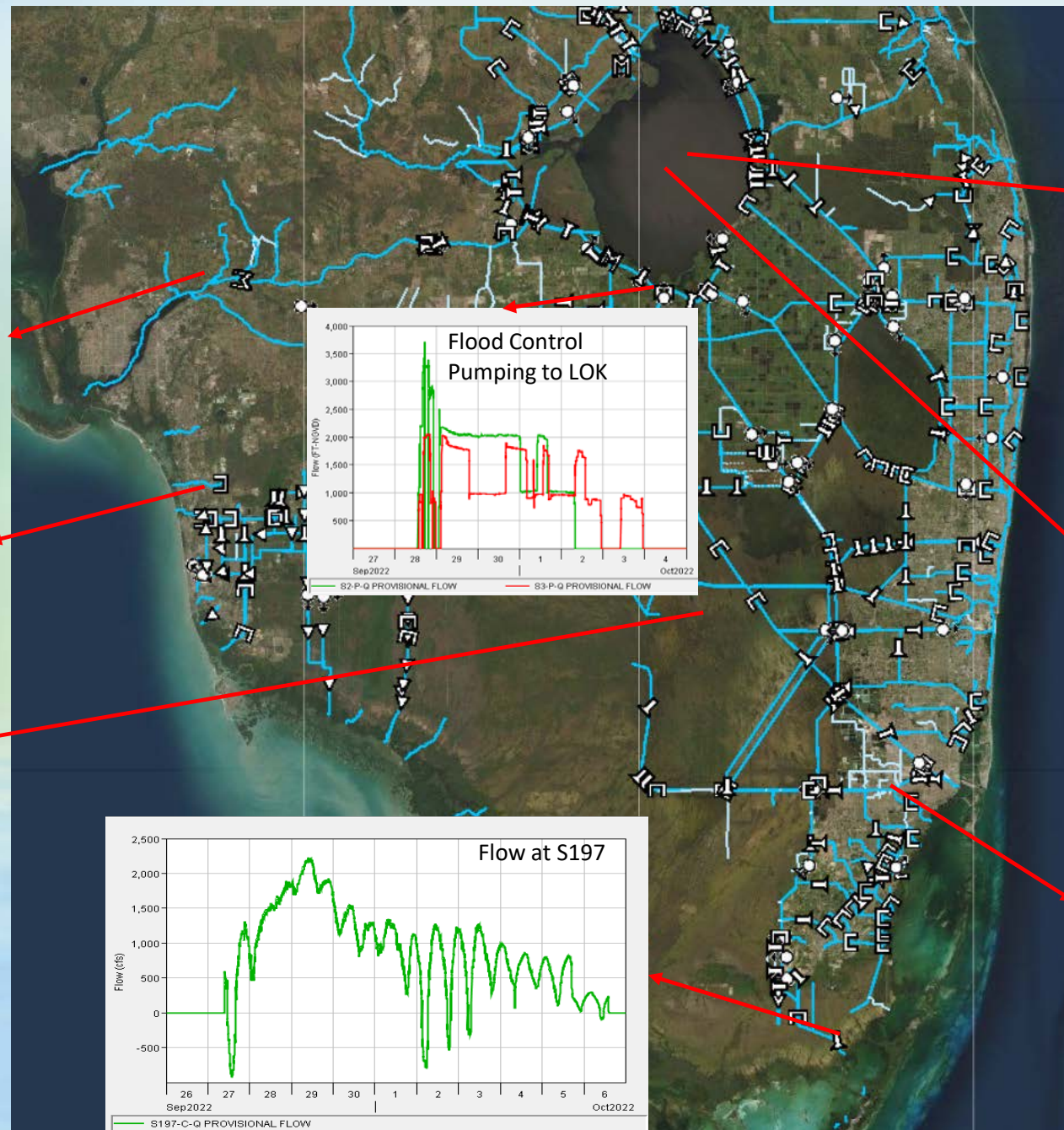
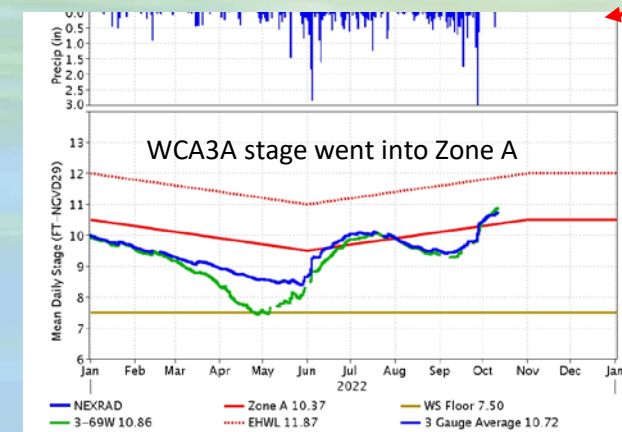
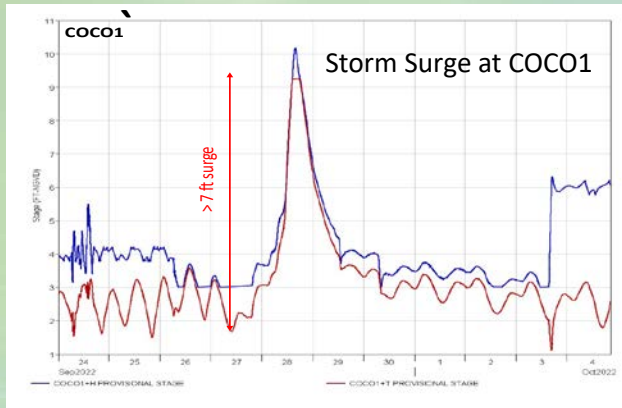
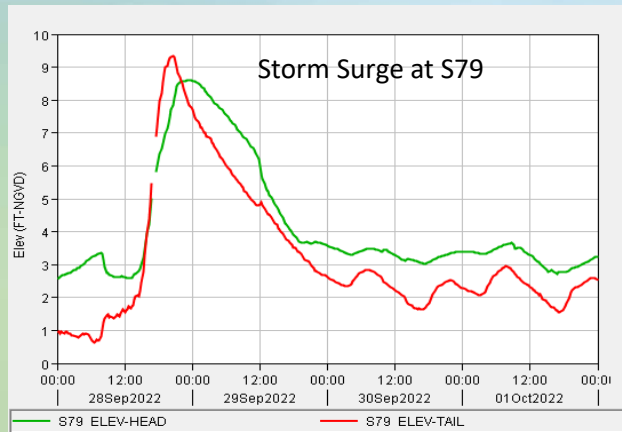
Maximum Water Height are Hindcast Values



Hurricane Ian Total Rainfall Sep. 26-29, 2022







Summary of Post -Hurricane Ian Conditions

- Stage in Kissimmee Chain of Lakes quickly rose above regulation schedules
- Caloosahatchee River Estuary experienced significant storm surge up to S-79
- Lake Okeechobee stage increased rapidly and experienced ~10' seiche
- Stage in WCA increased rapidly ~2' and above regulation schedule
- Flow at S-179 increased from 0cfs to 2000 over two days and reduced to 0 cfs in one week