



# SOUTH FLORIDA ECOSYSTEM RESTORATION TASK FORCE

---



LEADERSHIP • PARTNERSHIP • RESULTS

## Implementing WRDA 2020:

## September 6, 2023

# WRDA 2020 Direction

**Part 1:** Develop a priority list of invasive species.



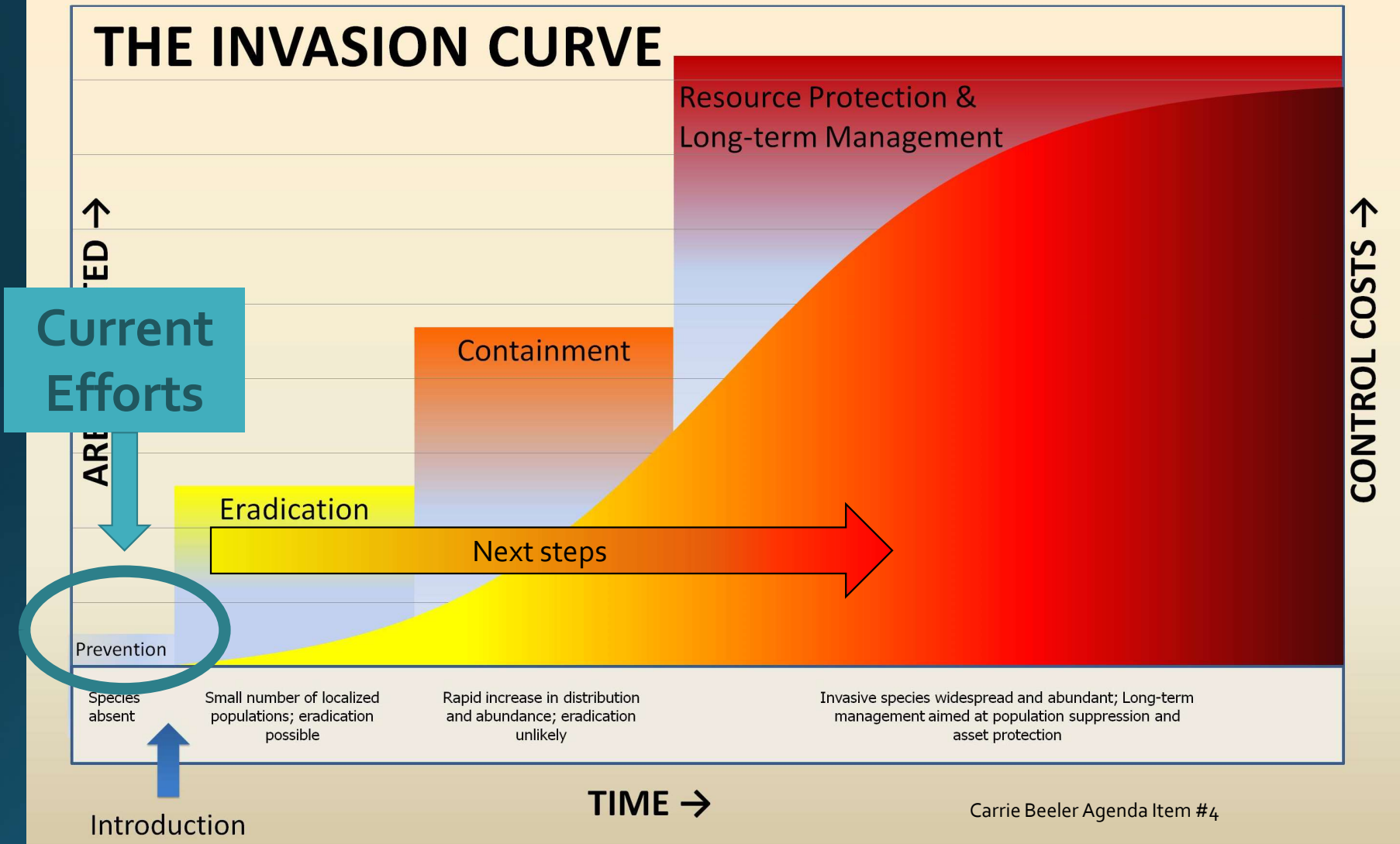
**Part 2:** Focus on cooperative and collaborative efforts to:

- Guide applied research
- Develop innovative strategies and tools
- Implement specific management, control, and eradication activities, including prevention

Photo Credits from left to right: Midas cichlid illustrated by Diane Peebles, Tropical clawed frog provided by FWC, Northern African python by <https://animalstime.com/african-rock-python-facts/>, Lumnitzera racemosa by Jennifer Possley, and Conehead Termite <http://www.pestworld.org/pest-guide/termites/conehead-termites/>.

Carrie Beeler Agenda Item #4

# THE INVASION CURVE



# WRDA 2020, Next Steps

---

- Recommended Actions for the SFERTF:
  - Interrupting Pathways
  - Response Planning
- Example Prevention Resource Needs
- Science-Based Prioritization Process

## Recommended Actions for SFERTF:

## Interrupting Pathways

### Prevent Arrival

- Consider opportunities to restrict importation and possession of species through regulation using appropriate authorities
- Support additional inspection authorities to allow inspection of domestic containers that carry wildlife
- Support efforts to review and revise equipment decontamination protocols & procedures as appropriate

### Outreach & Education

- Task Force, Working Group, Science Coordination Group, and OERI:
  - Distribute and share list of recommended actions,
  - Encourage member organizations and invasive species groups such as CISMAs to consider the recommendations, and
  - Create prevention based outreach initiatives and provide them to target audiences.

## Recommended Actions for SFERTF:

**Response Planning**: Prepare for swift response: Task Force, WG, & SCG agencies prepare in case of species arrival



**Research**: Promote, fund, and support research that addresses prevention, including synthesis for priority species, to identify preferred habitat, likely points of entry, and possible interruption and control methods



**Monitoring**: Support existing and new monitoring programs at prevention pathway points and key resource and indicator areas



**Response Planning**: Encourage development of response action plans and teams across taxa



## Prevention Resources Needed Examples

**REGULATIONS:** Inspection Programs (U.S. FWS LE, USDA, FWC and FDACS): Additional inspection resources such as inspectors and dogs/handlers

**OUTREACH AND EDUCATION:** Cleaning stations at boat ramps, marinas, fishing tournaments, the State line, and other freshwater public access points

**OUTREACH AND EDUCATION:** Additional resources, including support to South Florida Ecosystem CISMAs

**RESPONSE PLANNING:** Resources for research, monitoring, and planned response actions, monitoring and teams for prevention species as needed



Carrie Beeler, Agenda item #4



# Science-Based Prioritization Process

- October 24 – WRDA Invasive Species Expert Advisory Group
  - Launch next steps
- Include additional experts as needed
- Create consistent prioritization support tools at each stage of invasion curve
  - EDRR species and established species
- Integrate indicators used to evaluate restoration success
  - 2024 (1<sup>st</sup> quarter) Workshop
  - Identify how performance measures are/could be affected by novel species
  - Identify introduction/dispersal pathways



# Science-Based Prioritization Process

- Science-based prioritization support tool development
  - Standardized and transparent
  - Allows evaluation of species to create lists of priority species
  - Question modules that evaluate pathways, invasion history, and effects on indicator/performance measures
  - Assess accuracy of prediction with species of known outcome
  
- Revisit prevention lists

# Subject Matter Expert Advisory Team

## WG/SCG Agency Appointees

- James Erskine, WG Chair
- Lawrence Glenn, SCG Chair
- Nick Aumen, USGS and WG Vice Chair
- Craig Van Der Heiden, Kevin Donaldson, and Amy Castaneda, Miccosukee Tribe
- Bill Thomas, FWS Refuge
- Art Roybal, FWS Ecological Services
- Jessica Spencer, USACE
- Kelli O'Donnell, NOAA
- Tylan Dean, NPS
- Sarah Funck & Matt Phillips, FWC
- LeRoy Rodgers, SFWMD
- Brenda Hovde, PBC
- Dr. Eric Rohrig and Dr. Patti Anderson, FDACS
- Nathan Fikkert, USDA
- Janet Gil, Miami-Dade County

## Other Experts

- Mitch Barazowski, SW CISMA
- Dennis Giardina, ECISMA
- Alexandra Onisko and Michael Yustin, TC CISMA
- Deah Lieurance, UF IFAS (Horizon Scan)
- Wes Daniel, USGS (NAS screening)
- Christina Romagosa (Animal screening tool)
- John Galvez, USFWS Fisheries/Aquatic Invasive Species Program

## OERI

- Carrie Beeler
- Allyn Childress
- Adam Gelber

# Discussion

Invasive Species Agenda Item #4 Carrie Beeler