

COMPREHENSIVE EVERGLADES RESTORATION PLAN

# LOXAHATCHEE RIVER WATERSHED RESTORATION PROJECT (LRWRP)

Howard Gonzales Jr.  
Programs and Project Management Division  
Jacksonville District  
U.S. Army Corps of Engineers

20 June 2019



US Army Corps  
of Engineers®



# COMPREHENSIVE EVERGLADES RESTORATION PLAN

## LOXAHATCHEE RIVER WATERSHED RESTORATION PROJECT (LRWRP)

### PRESENTATION PURPOSE

- Update the South Florida Ecosystem Restoration Task Force Joint Working Group / Science Coordination Group (WG/SCG) on progress made to complete the required Project Implementation Report for agency approval and submission to Congress.

### AGENDA

- Project Overview
- Recommended Plan
- Current schedule



US Army Corps  
of Engineers®



U.S. ARMY

# LOXAHATCHEE RIVER WATERSHED RESTORATION PROJECT (LRWRP)

## PROJECT PURPOSE & LOCATION

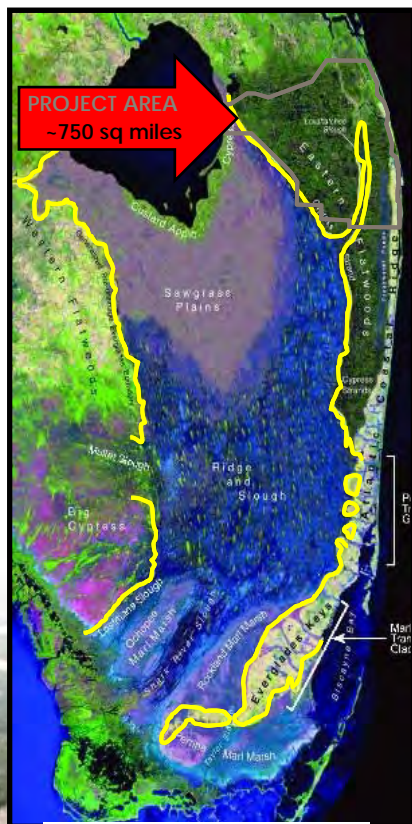
To restore and sustain the overall quantity, quality, timing, and distribution of freshwaters to the federally designated “National Wild and Scenic” Northwest Fork of the Loxahatchee River, while maintaining levels of flood risk and water supply.

This project also seeks to restore, sustain, and reconnect the area’s wetlands and watersheds that form the historic headwaters for the river.

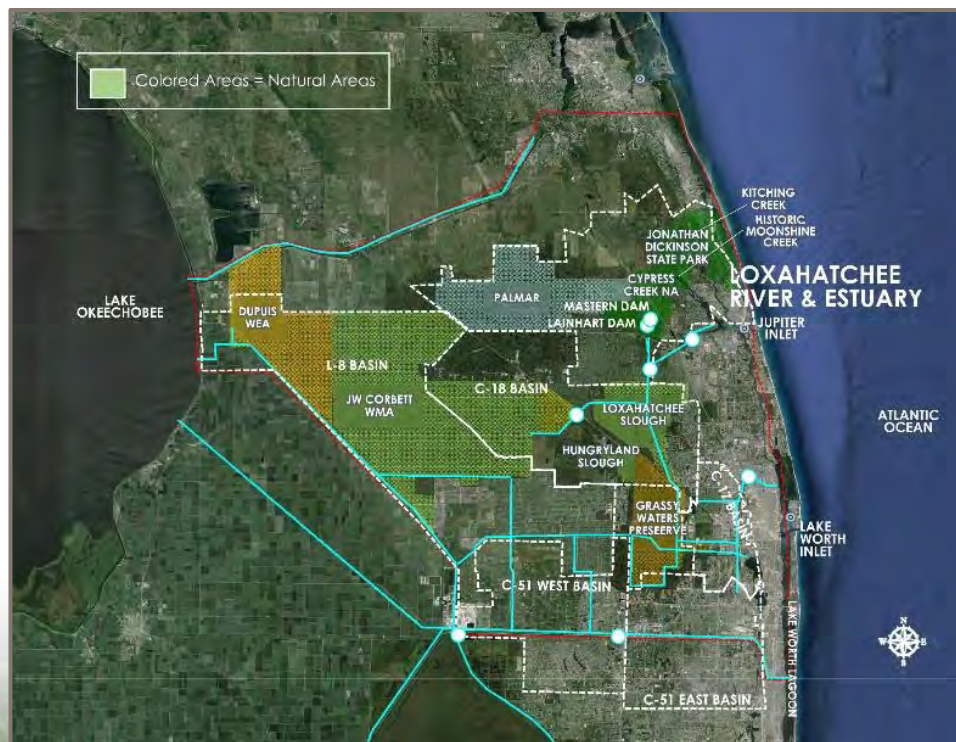
LRWRP is part of CERP and includes 3 of the 68 components



Existing



Pre-development



Existing, showing basins & natural areas



US Army Corps of Engineers®



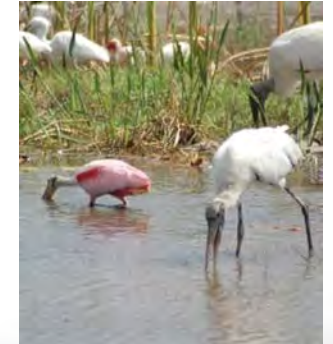
U.S. ARMY

# RECOMMENDED PLAN ENVIRONMENTAL BENEFITS



Restores flows: 91% of target for dry season, 98% for wet

Restores 27,000 acres of wetlands, reconnects an additional 51,000 acres



Improves habitat for fish and wildlife

Improves habitat for listed species, including Everglades Snail Kite & manatee



US Army Corps of Engineers®

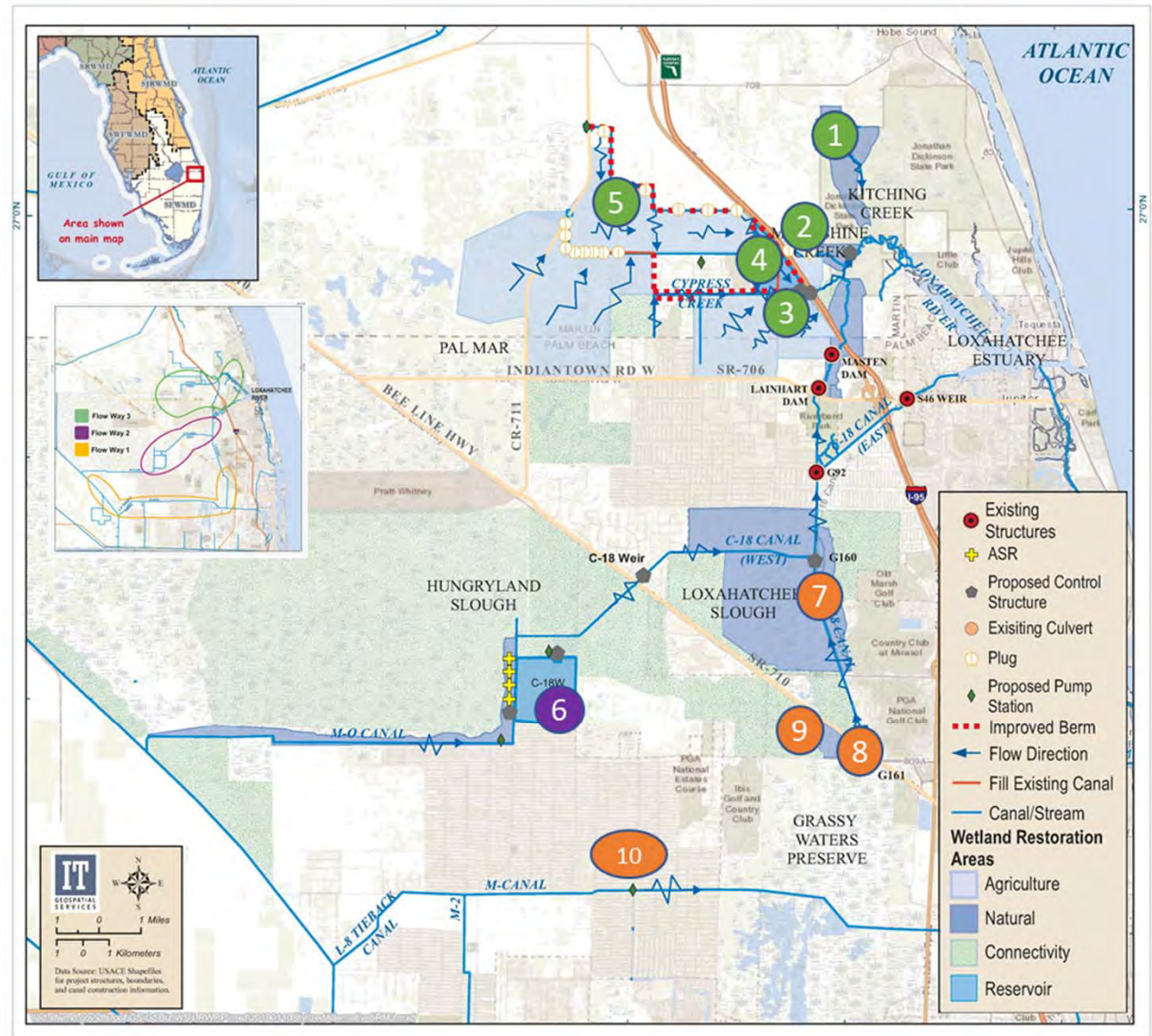


U.S. ARMY

# HIGHLIGHTS OF THE RECOMMENDED PLAN, ALTERNATIVE 5R

(Alt 5R best balances river & watershed benefits; preliminary cost estimate is \$470M)

1. **Kitching Creek (Restoration/hydration):** (Spreader canal; weir/plug (Jenkins Ditch)
2. **Moonshine Creek (MC) & Gulfstream East (GE) Restoration:** Connect HSLCD ditch to MC; clear MC vegetation; weir in Hobe Grove Ditch; grade area to historic topography
3. **Cypress Creek Canal (CCC)(Reduce over-drainage):** Replace CCC weir to raise control elevation, raise berm at Ranch Colony, automate twin 84" culverts; pump and spreader swale; regrade CC southern forks
4. **Gulfstream West (GW)(Restoration & reduce over-drainage):** Partial backfill & relocate southern end of HSLCD canal; small pump, construct flow through marsh to attenuate flows
5. **Pal-Mar East (Restoration & Connectivity):** Plug ditches; remove pipes; improve northern berm; construct western berm improve eastern berm; pumps at Thomas Farm to redirect drainage to GW flow-through marsh via north Nine-Gems Canal
6. **C-18W Reservoir (9,500 ac-ft. & 4 ASR wells):** Above ground reservoir; inflow pump, discharge structure; seepage control; M-O canal connector and pump
7. **G-160 Structure (Reduce over-drainage):** Improve hydroperiod in Loxahatchee Slough
8. **G-161 Structure (Connectivity):** GWP water to Loxahatchee Slough
9. **GWP Triangle (Connectivity):** Grade and reconnect
10. **M-1 Pump Station (conveyance):** Deliver lower M-1 basin water to M-Canal, GWP and G-161



# HIGHLIGHTS OF THE RECOMMENDED PLAN, ALTERNATIVE 5R

- RESTORE HYDROLOGY IN PART OF EVERGLADES
  - ✓ Over 8,000 habitat units in Pal Mar and Lox Slough
  - ✓ Ridge and Slough habitats
  - ✓ Unique mosaic mix of mesic flatwoods, wet flatwoods, wet prairie, cypress floodplain, strand, dome swamp, depression marsh, mesic, hydric hammock
- RECOVER THREATENED AND ENDANGERED SPECIES
  - ✓ Everglade Snail Kite, Eastern Indigo Snake, Florida Manatee, and Wood Stork
  - ✓ Habitat which supports Everglades species (wading birds, prey)
- INCREASE NATURAL AREA EXTENT OF WETLANDS
  - ✓ 17,000 acres agriculture lands restored to wetlands
  - ✓ 10,000 acres of natural areas improved
  - ✓ 78,000 (51,000 additional) acres reconnected
- ESTUARY HABITATS – SUPPORTS FISHERIES
  - ✓ Restore oyster communities
  - ✓ Maintain seagrass communities
- Restore Flows to Northwest Fork of Loxahatchee River
  - ✓ Meet dry season flow targets 91% of days (47% FWO)
  - ✓ Improve Tape Grass habitat



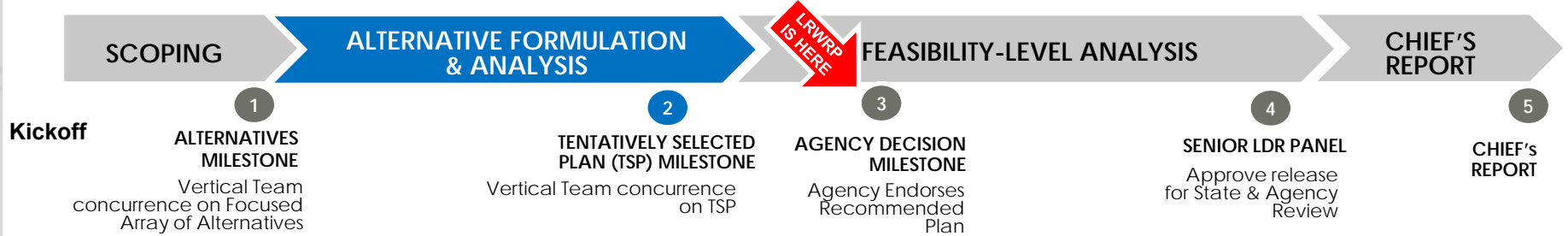
US Army Corps  
of Engineers®



U.S. ARMY

# SCHEDULE

## SMART PLANNING PROCESS



ACTIVITY	SCHEDULE
Kickoff	21 Jan 2016 (A)
1 - Alternatives Briefing	25 Apr 2016 (A)
2 - Tentative Selected Plan Briefing	31 Jul 2018 (A)
3 - Agency Decision Briefing	27 Jun 2019
4 - Senior Leaders Panel Briefing	13 Dec 2019
5 - Chief's Report	16 Mar 2020

LRWRP IS HERE

Public and Agency Reviews of Final PIR/EIS – Jan to Feb 2020



US Army Corps of Engineers®



U.S. ARMY

COMPREHENSIVE EVERGLADES RESTORATION PLAN

# LOXAHATCHEE RIVER WATERSHED RESTORATION PROJECT (LRWRP)

Howard Gonzales Jr.  
Programs and Project Management Division  
Jacksonville District  
U.S. Army Corps of Engineers

20 June 2019



US Army Corps  
of Engineers®



U.S. ARMY