

SOUTH FLORIDA WATER MANAGEMENT DISTRICT



Flow dissipators at all 17 inflow points for STA 3/4



Perimeter canal and embankment foundation installation for Caloosahatchee Reservoir



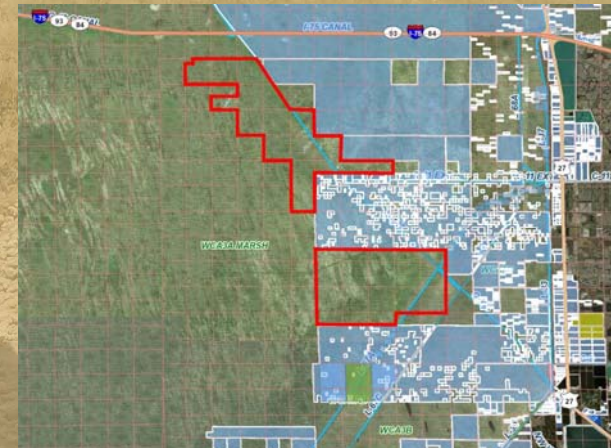
Removing roadbed from Old Tamiami Trail



Broke Ground on EAA Reservoir Project STA



4 of 6 Cells Hydrated at C-44 STA



Acquired 20,000 Wetland Acres in WCA3