

# SFWMD Program and Project Update

Working Group/ Science Coordination Group Meeting  
September 17, 2020

Megan Jacoby, Principal Federal Policy Analyst  
Ecosystem Restoration & Capital Projects

# SOUTH FLORIDA ECOSYSTEM RESTORATION PROJECTS



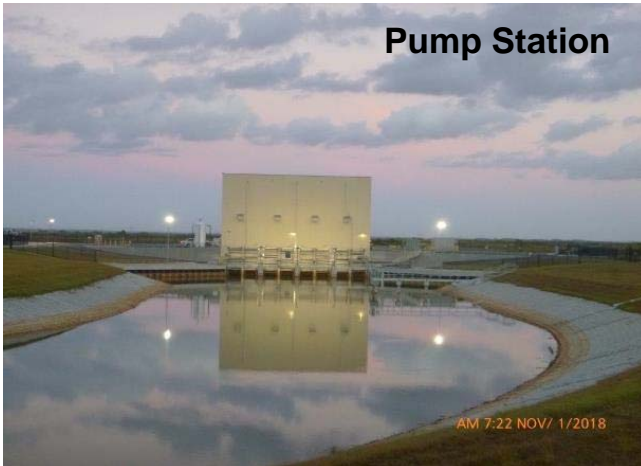
## C-44 Reservoir & STA

Reservoir



- SFWMD Projects:
  - S-404 Spillway - complete
  - Pump Station – complete
  - STA – construction schedule
    - Cells 1-5 complete
    - Cell 6 in 2020
- USACE Project:
  - Reservoir – construction ongoing

Pump Station



STA



S-404 Spillway





Distribution Canal looking West



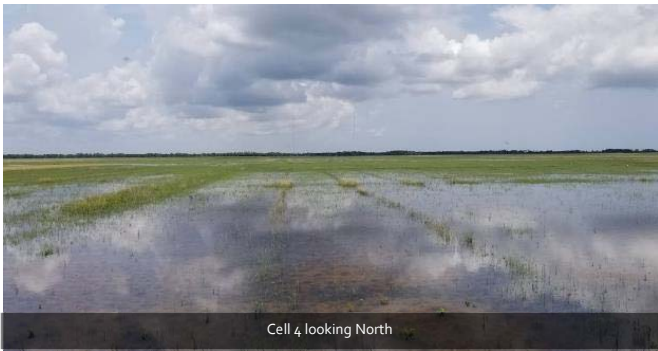
Cell 5 grading



Hydration Station



Cell 2 looking North



Cell 4 looking North

# C-44 STA

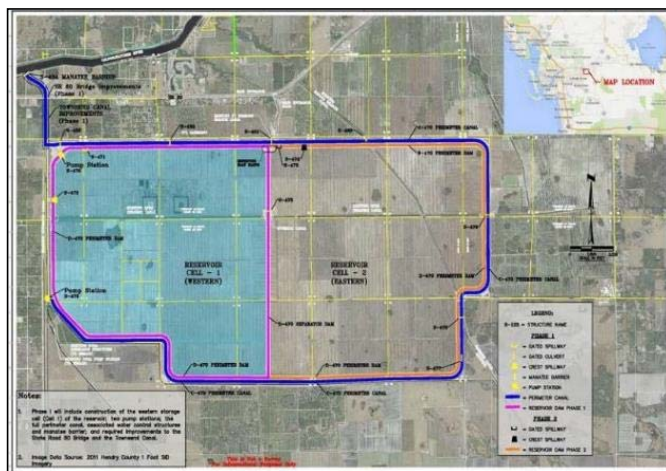
---

Presenter – Megan Jacoby

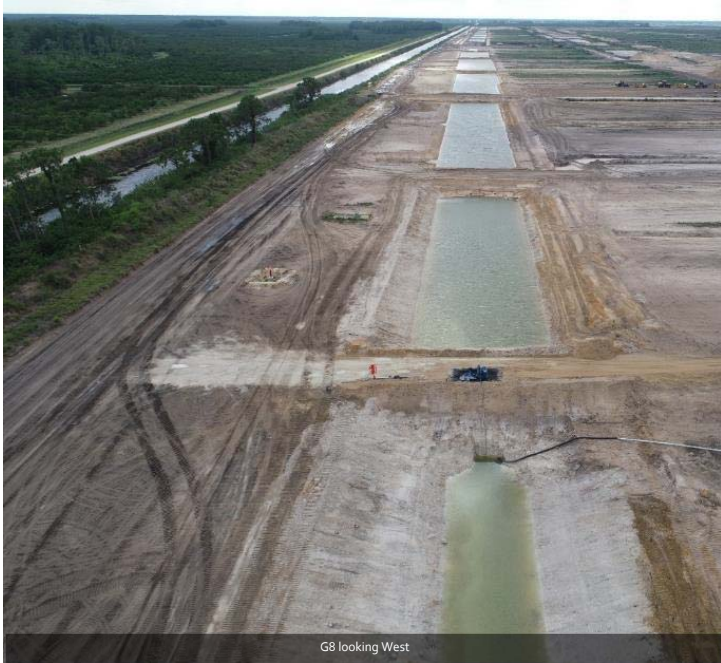


# C-43 Reservoir

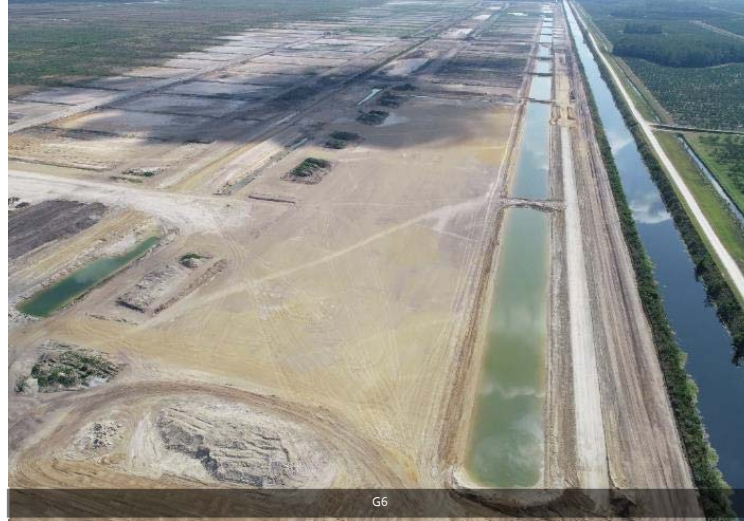
- State began construction in 2015
  - Package 1: Preload and Demolition – Complete
  - Package 2: Construction of S-476 (195 cfs) Pump Station - Complete
  - Package 3: S-470 (1500 cfs) Pump Station completion - Spring 2022
  - Package 4: Civil works completion – 2023



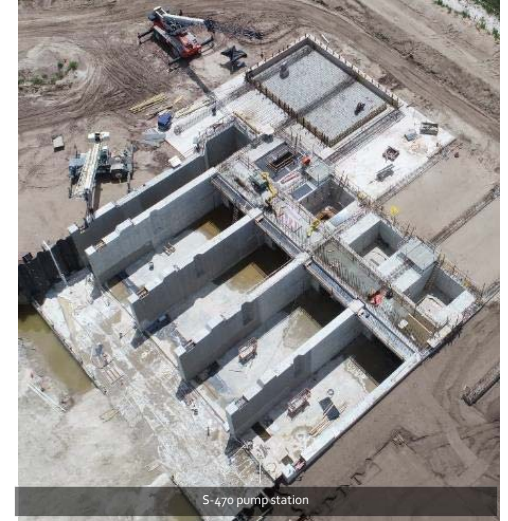
Presenter – Meqan Jacoby



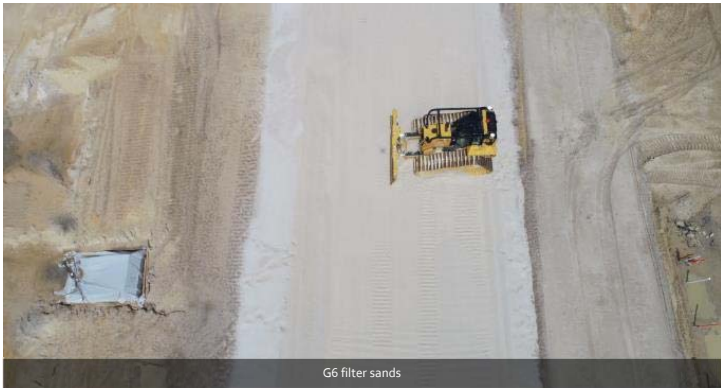
G8 looking West



G6



S-470 pump station



G6 filter sands

# C-43 Reservoir Construction

Presenter – Megan Jacoby



# Central Everglades Planning Project - South

## ➤ Old Tamiami Trail Removal

- Under construction
- Expected completion January 2022
- Powerline removal expected to be complete September 2020



## ➤ S-333N

- Under construction
- Expected completion September 2020



New canal being excavated to meet existing L29 canal  
Your Watermark - See Settings

S 333 N  
30 Jun 2020 10:34:49

## ➤ PPA executed July 27, 2020



Area 2 STA263 - FPL drew rolls steel cables from the old power lines for disposal  
KIMLEY-HORN

Old Tamiami Trail Removal  
25 Aug 2020 13:47:02

# Everglades Agricultural Area STA

## ➤ Canal Conveyance Improvements

- Expedited site investigations of Miami and North New River Canal Conveyance
- Preliminary design report for channel improvements expected October 2020

## ➤ Stormwater Treatment Area

- Began construction for Inflow/Outflow Canal with site preparation April 2020 and canal excavation in July 2020
- Pre-Partnership Credit Agreement executed May 2020





# Everglades Agricultural Area STA

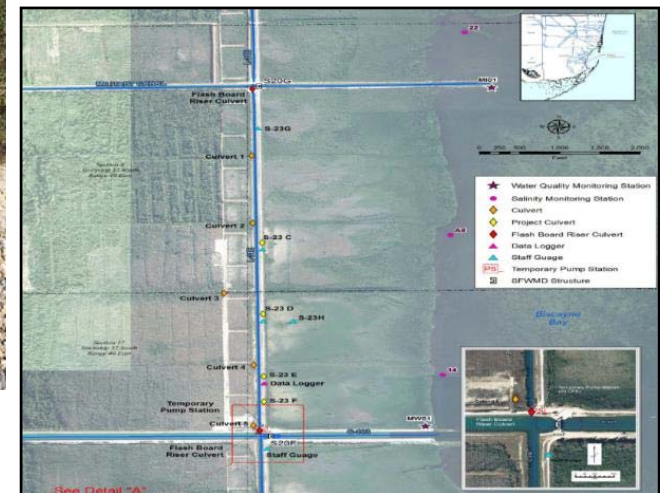
## ➤ Stormwater Treatment Area

- Blasting and excavation of Inflow/Outflow initiated August 2020
- STA final design due October 2020
- Construction expected to begin early 2021



# Biscayne Bay Coastal Wetlands

- Deering Estate – complete
- L-31E:
  - L-31E culverts – complete
  - Design of S-709 – complete
  - Design of remaining features - underway
- Cutler Wetlands design update – underway
  - Survey, geotech and modeling
- Biscayne Bay and Southeastern Everglades Restoration (BBSEER)
  - Project Management Plan- complete
  - Study initiated July 2020



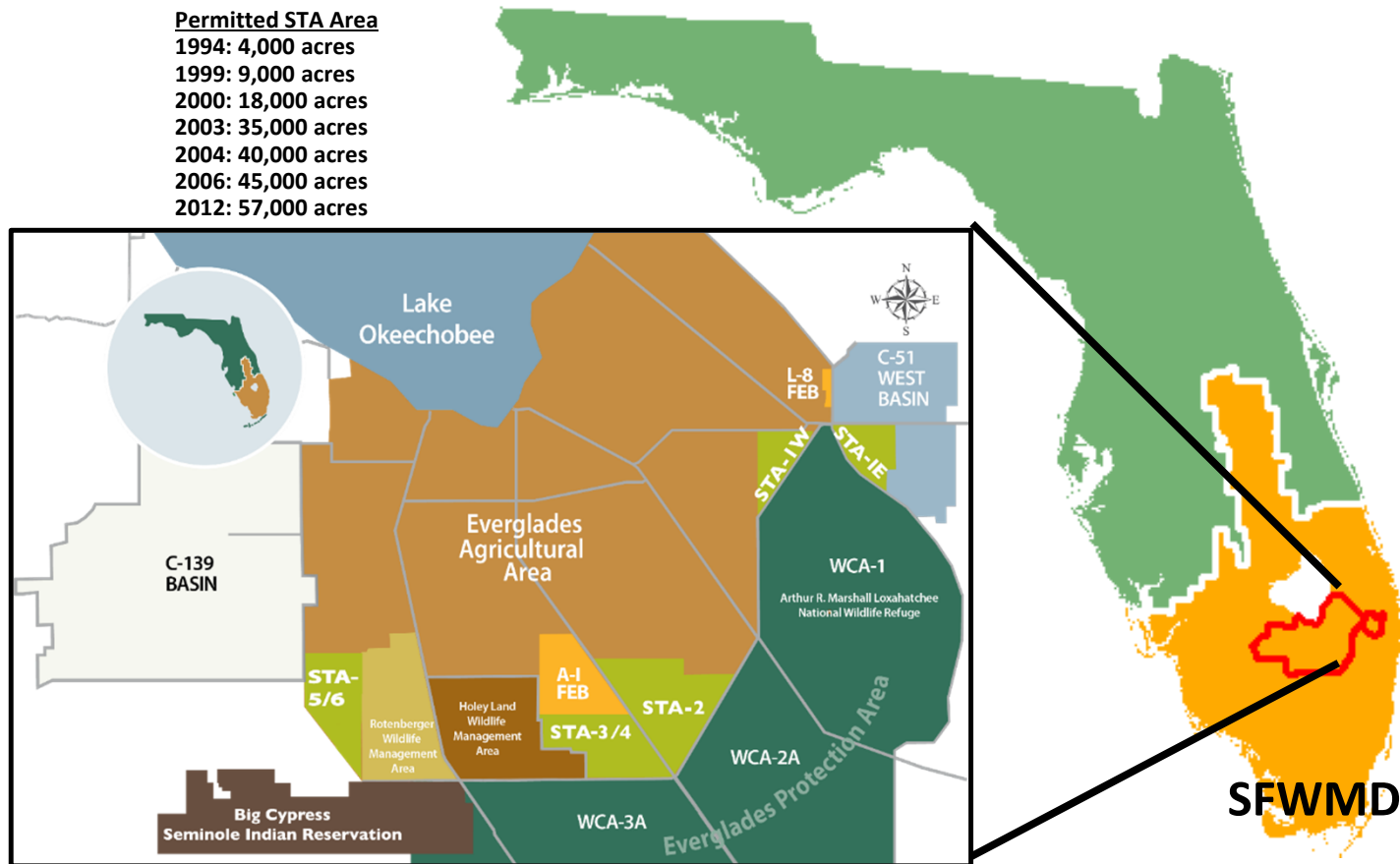
Presenter – Megan Jacoby



# STATE PROGRAMS

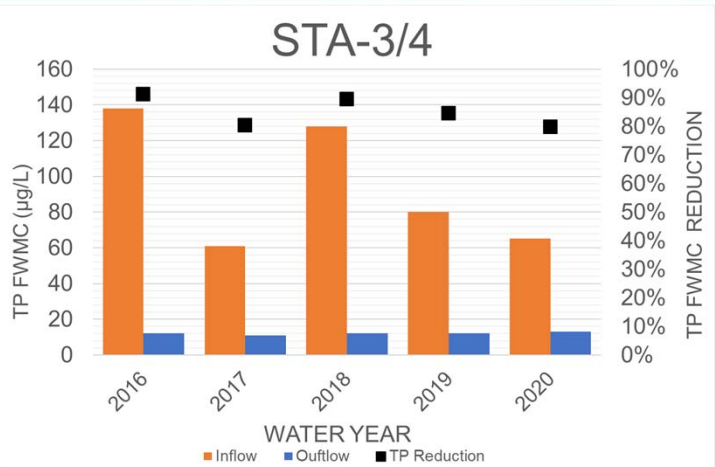
# Stormwater Treatment Areas (STAs)

**Permitted STA Area**  
1994: 4,000 acres  
1999: 9,000 acres  
2000: 18,000 acres  
2003: 35,000 acres  
2004: 40,000 acres  
2006: 45,000 acres  
2012: 57,000 acres

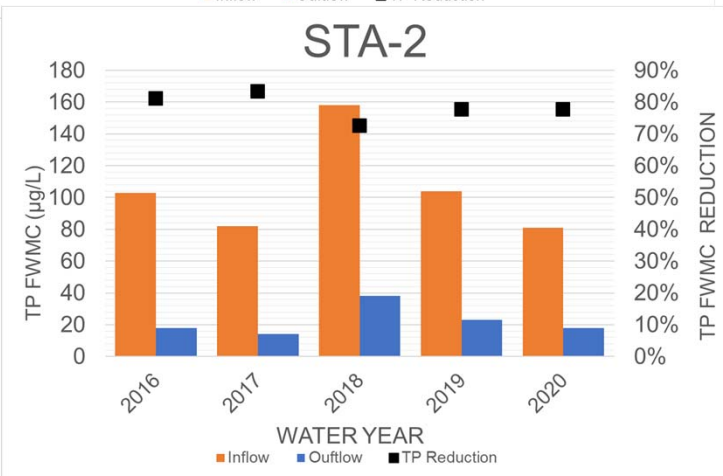




# All STAs Performance Comparison by Water Year (WY)

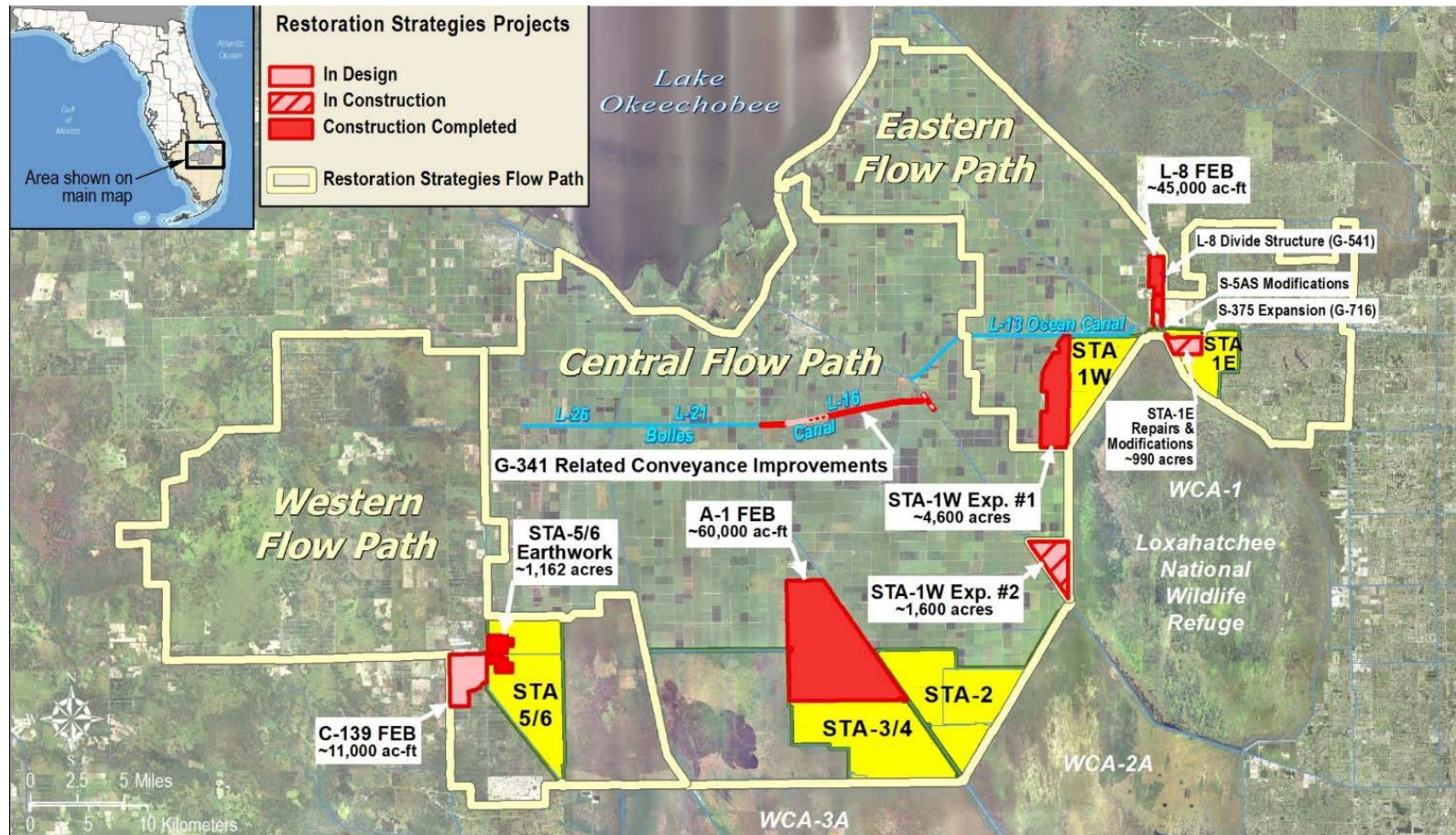


	WY2016	WY2017	WY2018	WY2019	WY2020
<b>Total Inflow (K acre-feet)</b>	<b>1,329</b>	<b>1,090</b>	<b>1,616</b>	<b>1,438</b>	<b>1,006</b>
<b>Lake Releases (K acre-feet)</b>	<b>291</b>	<b>249</b>	<b>160</b>	<b>470</b>	<b>153</b>



- Phosphorus reduction throughout all STAs is ~80%
- Quantity and timing of water delivery can impact STA performance

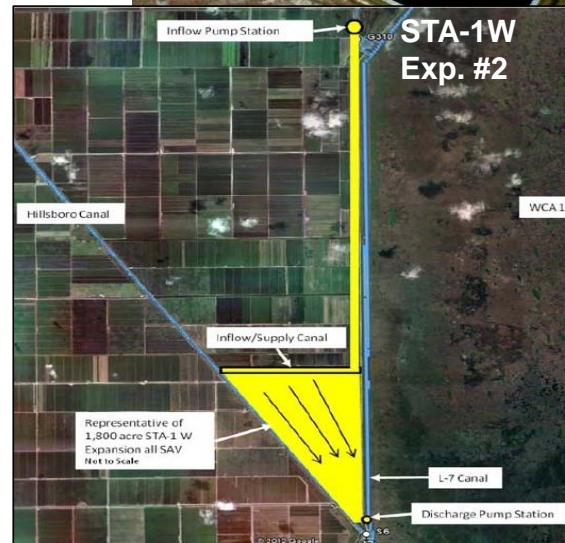
# Restoration Strategies: Key Projects



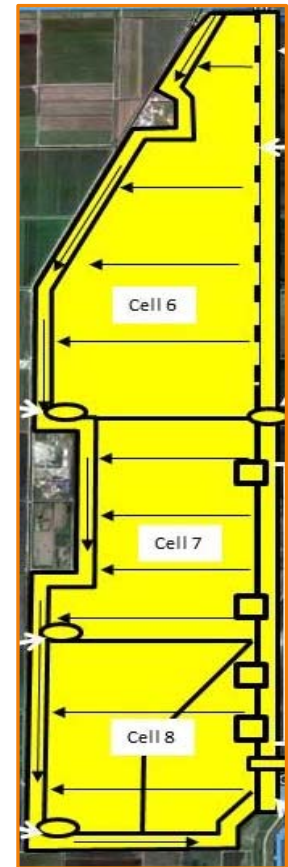


# RS - Eastern Flowpath

- Construction complete
  - L-8 FEB construction
  - STA-1W Expansion #1 construction
- 4 projects underway
  - STA-1E Repair and Modification – Under construction, complete by November 2022
  - STA-1W Expansion #1 – Optimization complete by December 2020
  - STA-1W Expansion #2 – Design complete and construction initiated
  - G-341 Related Conveyance Improvements – Sections 1, 2, & 3 complete, Section 4 under construction, Section 5 in design

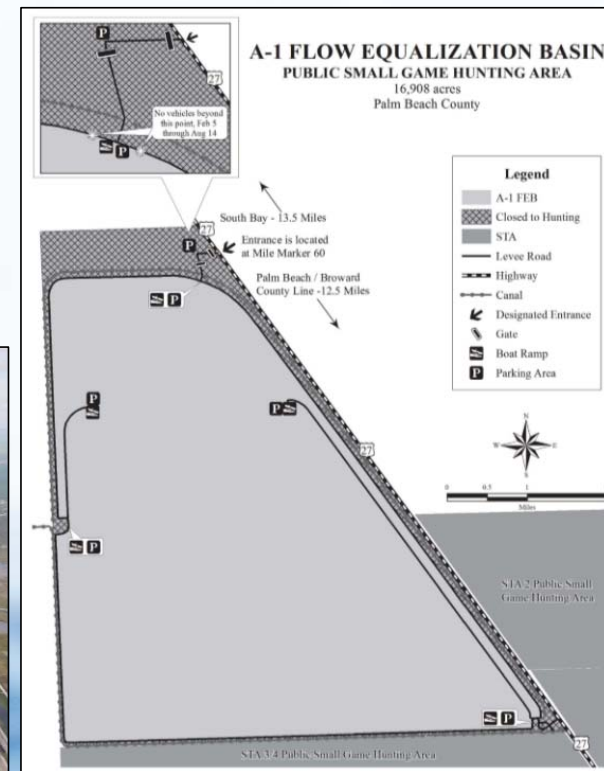


STA-1W Exp. #1



# RS - Central Flowpath

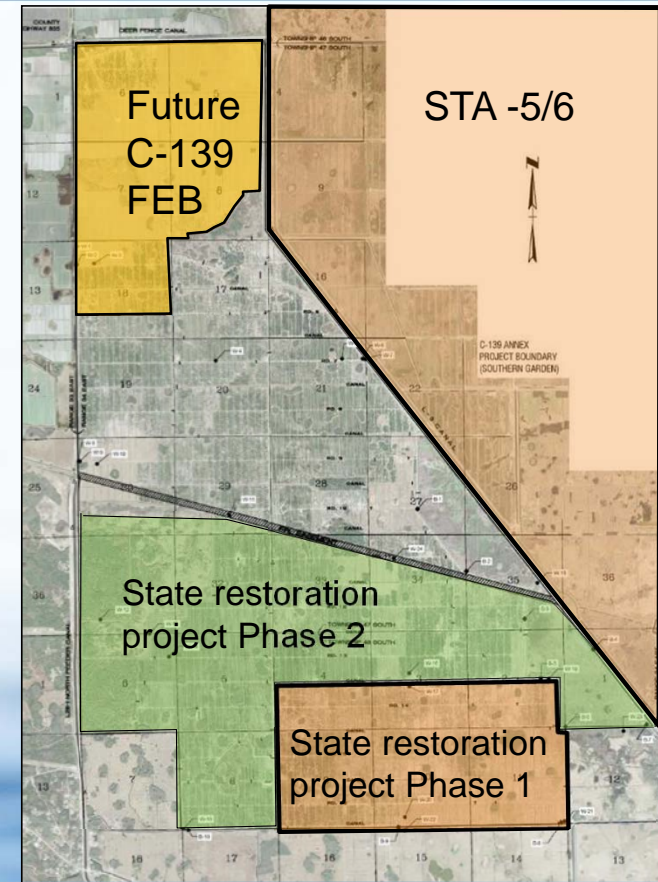
➤ A-1 FEB Complete





## RS - Western Flow Path

- 2 projects underway
  - STA 5/6 Improvements
    - Construction completed in May 2020
    - Initial flooding and optimization period by December 2025
  - C-139 FEB
    - Final Design complete, Initiate construction by January 2021



# DISCUSSION