

THE RESTORATION FRAMEWORK COMPONENTS AND PROJECTS

The CERP identified 68 components that can contribute significantly to "getting the water right" and restoring the health of the ecosystem. Through a rigorous planning process, the components described in the CERP "Yellow Book" are combined into 50+ implementable projects that become part of the Integrated Delivery Schedule (IDS).

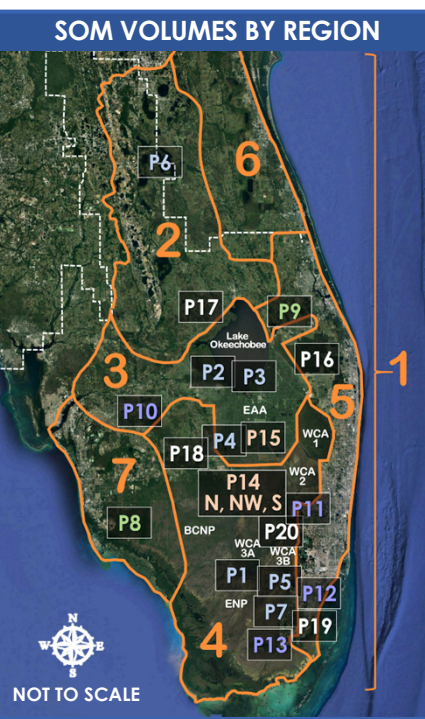
OPERATIONS IN SYNC WITH PROJECT DELIVERY

Restoration activities, including operational components recommended in the CERP, occur within the context of the larger, actively operated C&SF system. The current C&SF Project includes 1,000 miles of canals, 720 miles of levees, and several hundred water control structures providing services to south Florida such as water supply, flood protection, regional groundwater control, preservation of fish and wildlife, navigation, recreation, and prevention of saltwater intrusion.

System Operating Manuals: The Critical Last Step In Getting the Water Right and Achieving Maximum System-wide Benefits

Operating Manuals are the set of documents that describe how to operate components of the C&SF Project and CERP projects to ensure that the goals and purposes of the projects are achieved. Operating Manuals for the CERP consist of a System Operating Manual (SOM) and Project Operating Manuals (POMs). Draft Project Operating Manuals (DPOMs) are initially developed during the planning phase of project delivery.

- The SOM consists of 7 Volumes, organized according to geographical regions, that collectively provide a system-wide framework for the operation of components of the C&SF Project and CERP projects to ensure that projects function in a coordinated, systematic way.
- The CERP Programmatic Regulations require that POMs be updated, as appropriate, for project construction and operational phases, as well as when relevant CERP and non-CERP components come online. In turn, SOM Volumes are updated to include new or updated POMs. This helps ensure that the goals and purposes of the CERP are achieved.



EVERGLADES REPORT CARD



The 2019 RECOVER System Status Report provided a Report Card illustrating progress in achieving ecological goals in each RECOVER region, and on a system-wide basis.

Grading reflects the level of vulnerability to further degradation and the ability to provide ecosystem function:

- 80-100 Very Good
- 60-80 Good
- 40-60 Fair
- 20-40: Poor
- 0-20: Very Poor

The system-wide grade for the 2012 - 2017 assessment period was 45%, or fair. For the Everglades, this is concerning because it means the ecosystem is struggling to support the plants and animals that live there and the natural services they provide to people.

However, many projects and operating manual updates are scheduled for the next ten years that will help improve these conditions.

For more information about grading and methodology, visit: evergladesecohealth.org



#	RR	YELLOW BOOK NAME AND CODE
10	SC	Change Coastal Wellfield Operations (L)
11	GE	Site 1 Impoundment with ASR* (M)
16	GE	C-4 Structures (T)
19	LO	Taylor Creek/Nubbin Slough Storage and Treatment Area* (W)
38	SC	C-111 Spreader Canal* (WW) – Phase 2 in Planning
42	GE	Lower East Coast Water Conservation (AAA)
48	GE	C-51* and Southern L-8 Reservoir (GGG)
50	LO	Lake Okeechobee Watershed Water Quality Treatment Facilities (OPE)
53	GE	Seminole Tribe Big Cypress Water Conservation Plan (East and West)* (OPE)
56	GE	Acme Basin B (OPE)
57	NE	Lake Worth Lagoon Restoration (OPE)
58	GE	Winsberg Farms Wetlands Restoration (OPE)
64	GE	Southern CREW Project Addition (OPE)
65	GE	Lake Trafford Restoration (OPE)
66	GE	Henderson Creek/Belle Meade Restoration (OPE)
67	GE	Lake Park Restoration (OPE)
68	SC	Florida Keys Tidal Restoration (OPE)
69	ALL	Melaleuca Eradication and Other Exotic Plants (OPE)
2	NE	St. Lucie/C-44 Basin Storage Reservoir (B)
3	NE	Environmental Water Supply Deliveries to St. Lucie Estuary (C)
4	NE	Caloosahatchee Basin Storage Reservoir with ASR* (D)
5	NE	Environmental Water Supply Deliveries to Caloosahatchee Estuary (E)
7	GE	EAA Storage Reservoir (G)
8	GE	Everglades Rain-Driven Operations* (H)
12	GE	Water Conservation Area 3A and 3B Levee Seepage Management (O)
13	GE	Western C-11 Diversion Impoundment and Diversion Canal (Q)
14	GE	C-9 Stormwater Treatment Area/Impoundment (R)
18	GE	L-31N Improvements for Seepage Management (V)
22	GE	Additional S-345 Structures* (AA)
27	GE	Construction of S-356 A and B Structures*(FF)
29	GE	Pump Station G-404 Modification (II)
32	SC	Modification to SDCS in southern portion of L-31N and C-111 (OO)
33	GE	Decompartmentalization of Water Conservation Area 3* (QQ)
36	NE	C-23, C-24, C25 and Northfork and Southfork Basins Storage Reservoirs (UU)
61	SC	Biscayne Bay Coastal Wetlands* (OPE) – Phase 2 in Planning
63	SC	Southern Golden Gate Estates Hydrologic Restoration (OPE)
6	LO	Lake Okeechobee Regulation Schedule* (F)
15	GE	Central Lakebelt Storage Area (S)
17	GE	Bird Drive Recharge Basin(U)
20	GE	C-17 Backpumping (X)
21	GE	C-51 Backpumping to West Palm Beach Water Catchment Area (Y)
23	GE	Dade Broward Levee/Pennsuco Wetlands (BB)
24	GE	Broward County Secondary Canal System (CC)
25	GE	Modified Holy Land Wildlife Management Area Water Management Operations (DD)
26	GE	Modified Rotenberger Wildlife Management Area Water Management Operations (EE)
30	GE	Loxahatchee National Wildlife Refuge Internal Canal Structures (KK)
31	GE	C-51 Regional Groundwater ASR (LL)
37	GE	Palm Beach County Agricultural Reserve Reservoir (VV)
40	GE	Divert WCA2 flows to Central Lake Belt Storage (YY)
41	GE	Divert WCA3 flows to Central Lake Belt Storage Area (ZZ)
45	NE	Caloosahatchee Backpumping with STA (DDD)
46	GE	Flows to Eastern Water Conservation Area (EEE)
51	LO	Lake Okeechobee Tributary Sediment Dredging/Phosphorus Removal (OPE)
52	LO	Lake Istokpoga Regulation Schedule Modification (OPE)
54	GE	Miccosukee Water Management Plan (OPE)
62	SC	Restoration of Pineland & Hardwood Hammocks in C-111 Basin (OPE)
1	LO	North of Lake Okeechobee Storage Reservoir (A)
9	GE	L-8 Project (K)
28	LO	Lake Okeechobee Aquifer Storage and Recovery* (GG)
34	GE	Flow to Central Water Conservation Area 3A (RR)
39	GE	North Lake Belt Storage Area (XX)
43	GE	South Miami Dade County Reuse (BBB)
44	GE	Big Cypress/L-28 Interceptor Modification (CCC)
47	SC	Biscayne Bay Coastal Canals (FFF)
49	SC	West Miami Dade Reuse (HHH)
55	GE	Pal Mar and J.W. Corbett Wildlife Management Area Hydroptem Restoration (OPE)
60	GE	Protect and Enhance Existing Wetlands Systems along Lox (Strazzulla Tract) (OPE)
35	SC	Re-route Miami-Dade Water Supply Deliveries (SS)
59	GE	Palm Beach County Wetlands-based Water Reclamation (OPE)

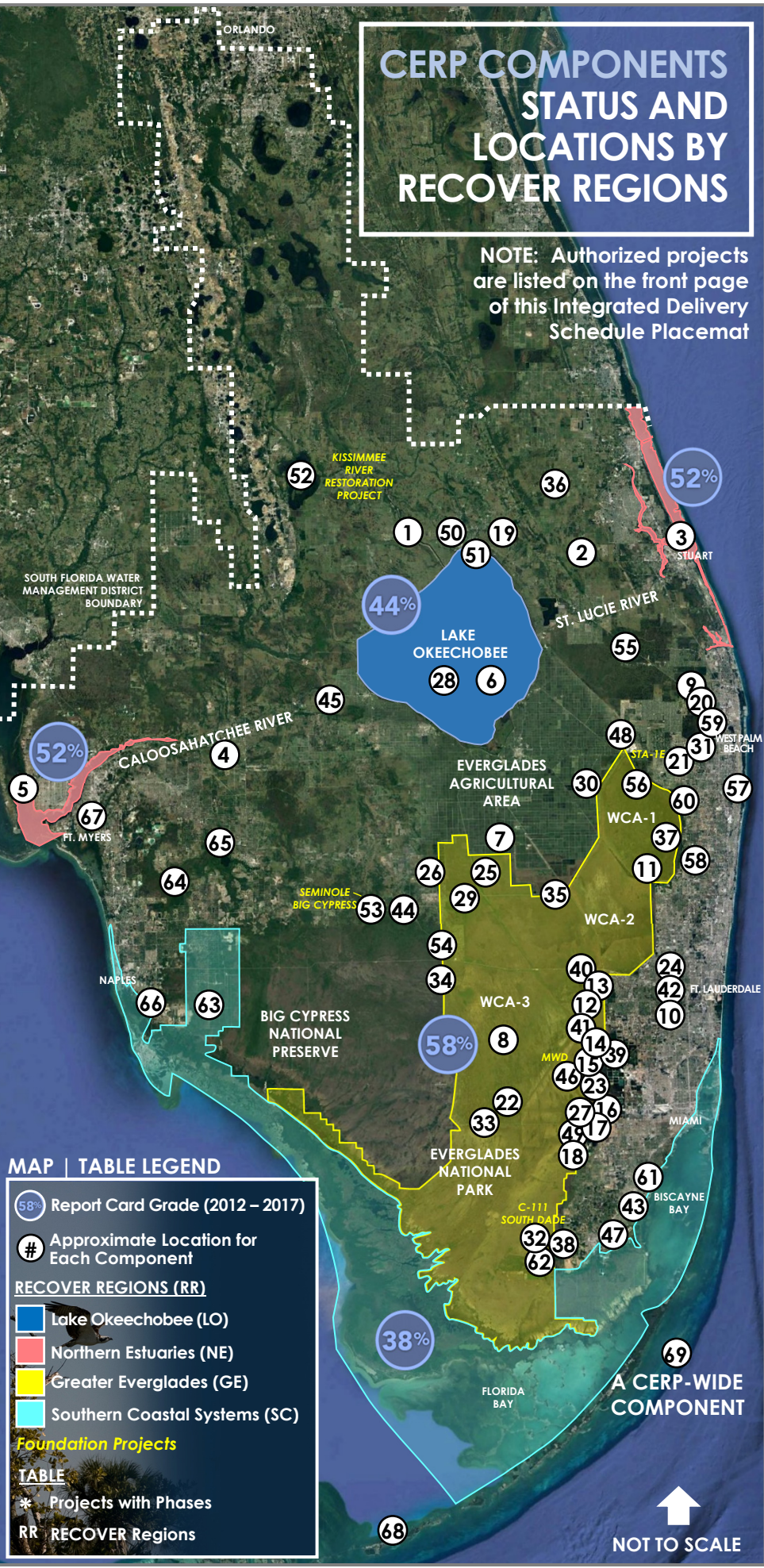
IDS CONSTRUCTION RELEVANT * SCHEDULES FOR SOM VOLUME, WATER MANAGEMENT OPERATING CRITERIA (DPOM, POM, WCP), NEPA, AND MODELING

Existing water control manuals (WCMs), water control plans (WCPs), and POMs will continue to govern operations until SOM Volumes are finalized.

SOM VOLUME	Project/Update	Oct 2019	Oct 2020	Oct 2021	Oct 2022	Oct 2023	Oct 2024	Oct 2025	Oct 2026	Oct 2027	Oct 2028	Oct 2029
SOM VOLUME 2: KISSIMMEE RIVER-LAKE ISTOKPOGA	1,2 Lake Okeechobee Watershed Restoration Project DPOM (P17)											
	1 Kissimmee River Restoration WCP (P6)											
	1,2 Development of Operational Transition Plan (P6)											
SOM VOLUME 3: LAKE OKEECHOBEE - EAA	1,2 Lake Okeechobee - EAA WCP: LOSOM (P2; P3)											
	1,2 C-43 Reservoir POM (P10)											
	IRL-South POM Update: C-44 Reservoir, STA (P9)											
	1,2 CEPP and CERP EAA Reservoir DPOM: EAA Reservoir, A-2 STA (P15) CEPP and CERP EAA Reservoir DPOM Update: A-2 STA (P15) 1,2 CEPP and CERP EAA Reservoir DPOM Update: CEPP North, EAA Reservoir (P4; P14N; P15)											
SOM VOLUME 4: WCAs-ENP-SDCS (COP-P1;P7)	1,2 Western Everglades Restoration Project (P18)											
	1,2 CEPP and EAA Reservoir DPOM Update: CEPP South CNT1 Interim Operations (P14S) 1,2 CEPP and EAA Reservoir DPOM Update: TTNS Phase 2, CEPP South (P5; P7; P14S; P14NW)											
SOM VOLUME 5: EAST COAST CANALS	1 IRL-South DPOM Update: C-23/C-24 Reservoirs, STA; C-25 Reservoir, STA (P9)											
	1,2 IRL South DPOM Update: C-23/C-44 Interconnect (P9)											
	1,2 Loxahatchee River Watershed Restoration Project DPOM (P16)											
	1 Broward County WPA DPOM Update: C-111 Impoundment, WCA 3A & 3B SMA (P11) Broward County WPA DPOM Update: C-9 Impoundment (P11) 1 Biscayne Bay Coastal Wetlands POM Update: L-31E Flowway, Cutler Wetlands (P12) 1,2 Biscayne Bay Southeastern Everglades Ecosystem Restoration DPOM (P19)											
SOM VOLUME 7: SOUTHWEST FLORIDA	1 Picayune Strand Restoration Project POM Update: Miller Pump Station (P8)											
	1,2 Picayune Strand Restoration DPOM Update: Flood Protection Features, Canal Plugging (P8)											

FOOTNOTES:
1 Updated NEPA with Public Engagement Anticipated
2 Updated Hydrologic Modeling Anticipated

CERP COMPONENTS STATUS AND LOCATIONS BY RECOVER REGIONS



NOTE: Authorized projects are listed on the front page of this Integrated Delivery Schedule Placemat

MAP | TABLE LEGEND

- 58% Report Card Grade (2012 – 2017)
- # Approximate Location for Each Component

RECOVER REGIONS (RR)

- Lake Okeechobee (LO)
- Northern Estuaries (NE)
- Greater Everglades (GE)
- Southern Coastal Systems (SC)

Foundation Projects

TABLE

- * Projects with Phases
- RR RECOVER Regions

*SOM Volume 1 (System-Wide Operational Framework for C&SF and CERP) and SOM Volume 6 (Upper St. Johns River Basin) will not have CERP POMs.