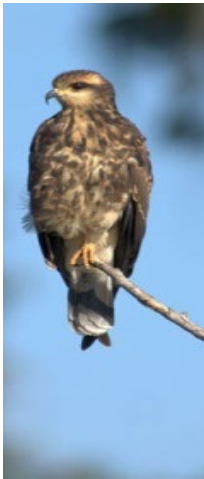




REstoration, COordination, VERification (RECOVER)

Strategy to update the Comprehensive Everglades Restoration Plan Monitoring & Assessment Plan

Gina Paduano Ralph, Ph.D.
RECOVER Program Manager
South Florida Ecosystem
Restoration Task Force
June 1, 2023



PRESENTATION OUTLINE

- Comprehensive Everglades Restoration Plan (CERP)- Monitoring & Assessment Plan (MAP) Overview
- RECOVER Strategy to update the CERP MAP
- Application to a South Florida Science Plan



CERP MAP OVERVIEW

Purpose:

- Measure system-wide response to CERP
 - *Is CERP achieving its stated goals & objectives?*
- Support and enable **Adaptive Management**

CERP Goals and Objectives (USACE and SFWMD 1999)

Goal: Enhance Ecological Values

- Increase the total spatial extent of natural areas
- Improve habitat functional quality
- Improve native plant and animal species abundance and diversity

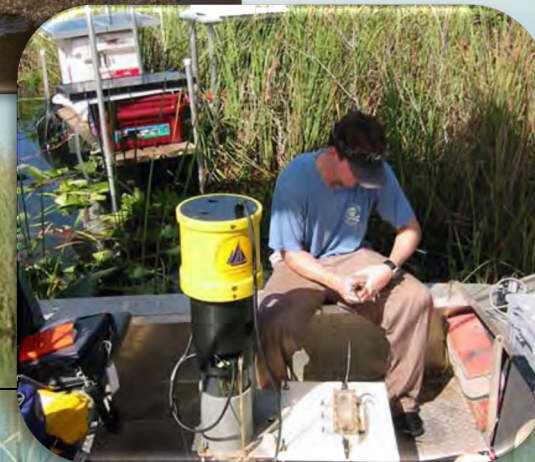
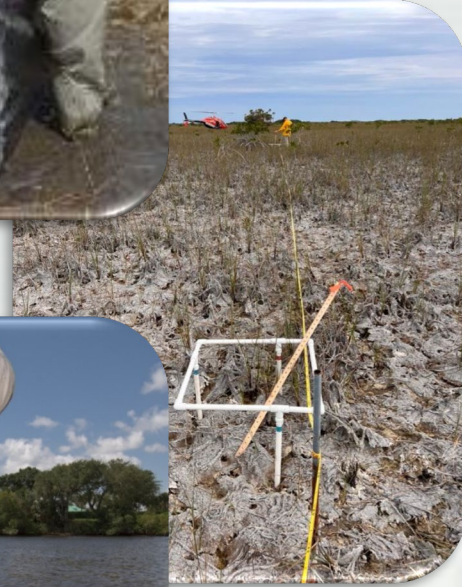
Goal: Enhance Economic Values and Social Well-Being

- Increase availability of fresh water (ag, municipal and industrial)
- Reduce flood damages (ag/urban)
- Provide recreational and navigation opportunities
- Protect cultural and archeological resources and values



CERP MAP OBJECTIVES

- Establish pre-CERP reference state
- Provide the **assessment of the system-wide responses**
- **Detect unexpected responses** of the ecosystem to changes in stressors, resulting from CERP activities
- Support scientific investigations designed to **increase ecosystem understanding, establish cause and effect relationships, and interpret unanticipated results**

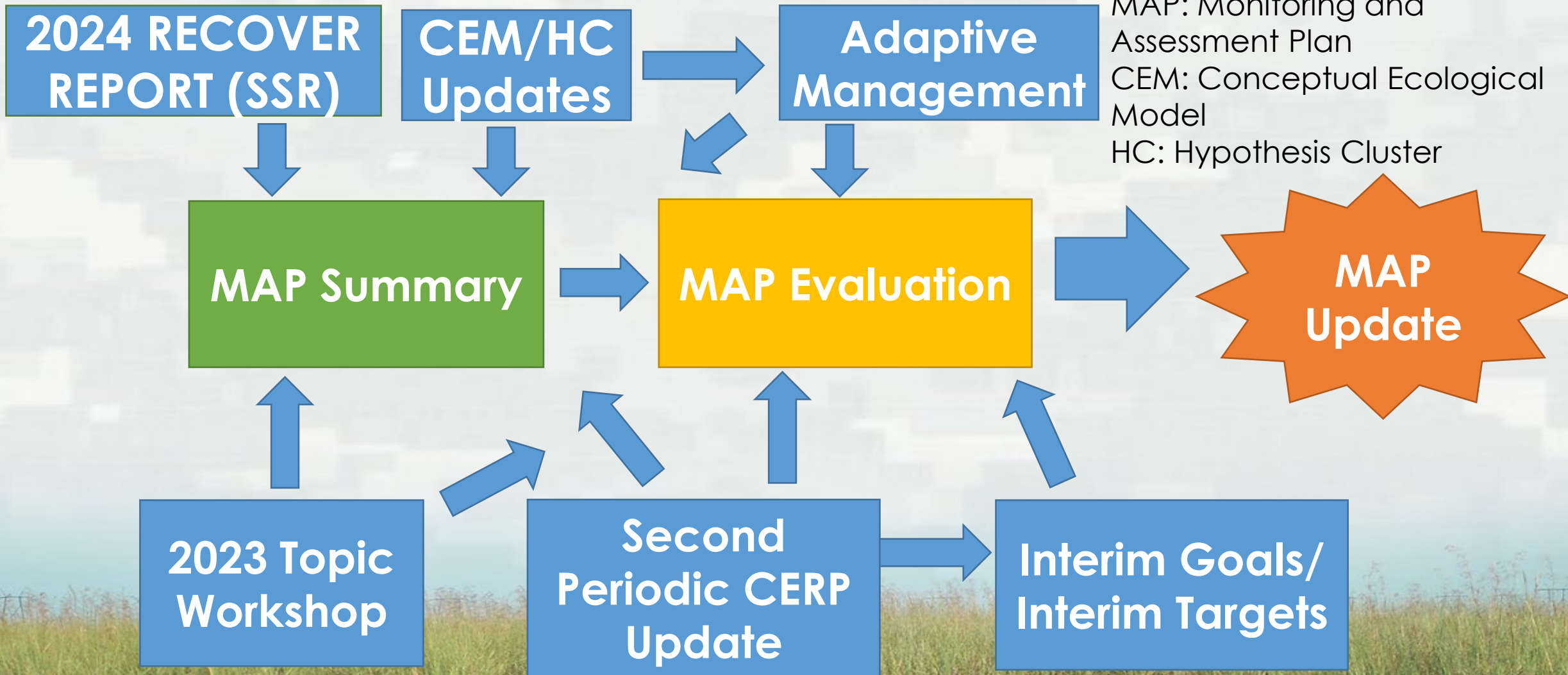


RECOVER FIVE YEAR PLAN: FISCAL YEARS 22-26

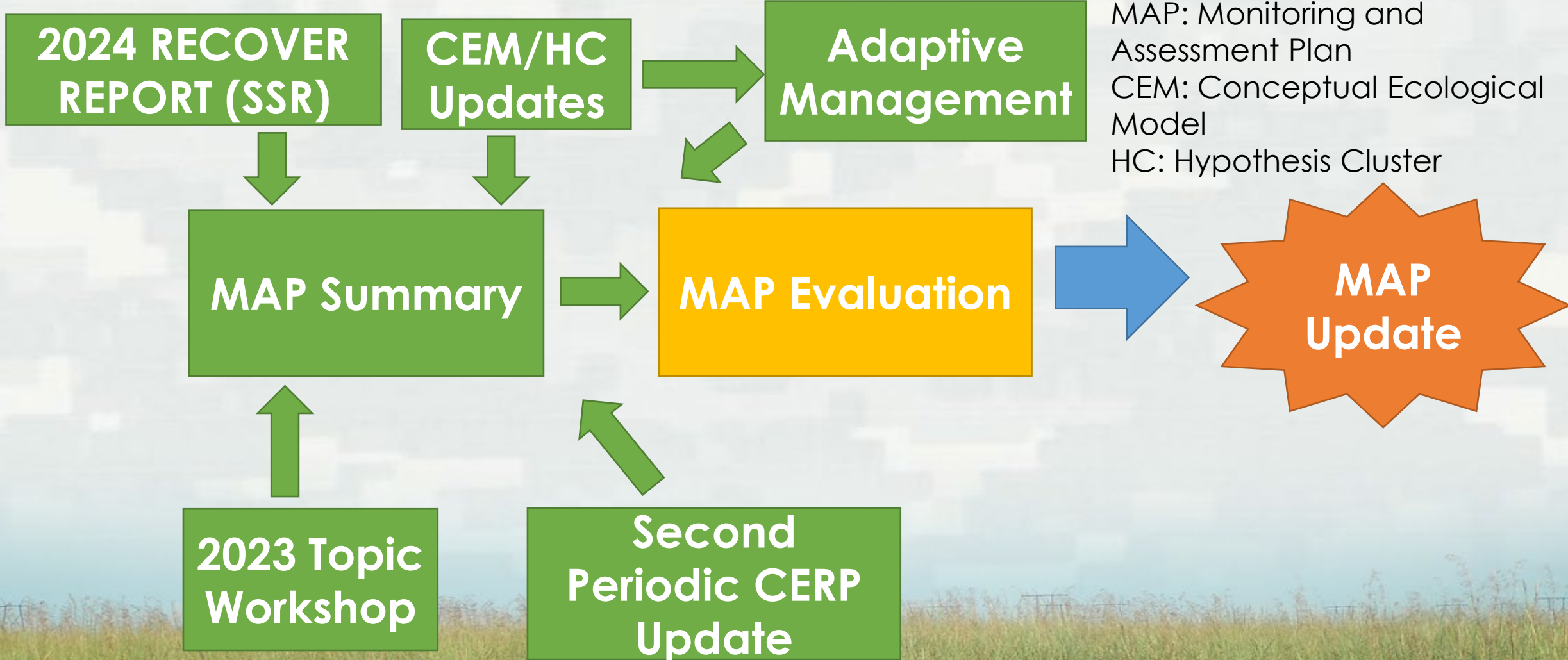
Charge/Product	FY22	FY23	FY24	FY25	FY26
Assessment					
MAP Summary					
MAP Evaluation					
MAP Update					
2024 RECOVER Report (System Status Report)					
Evaluation					
Interim Goals/Interim Targets					
Second Periodic CERP Update					
Planning & Integration					
Conceptual Ecological Model/Hypothesis Cluster Updates					
Adaptive Management					



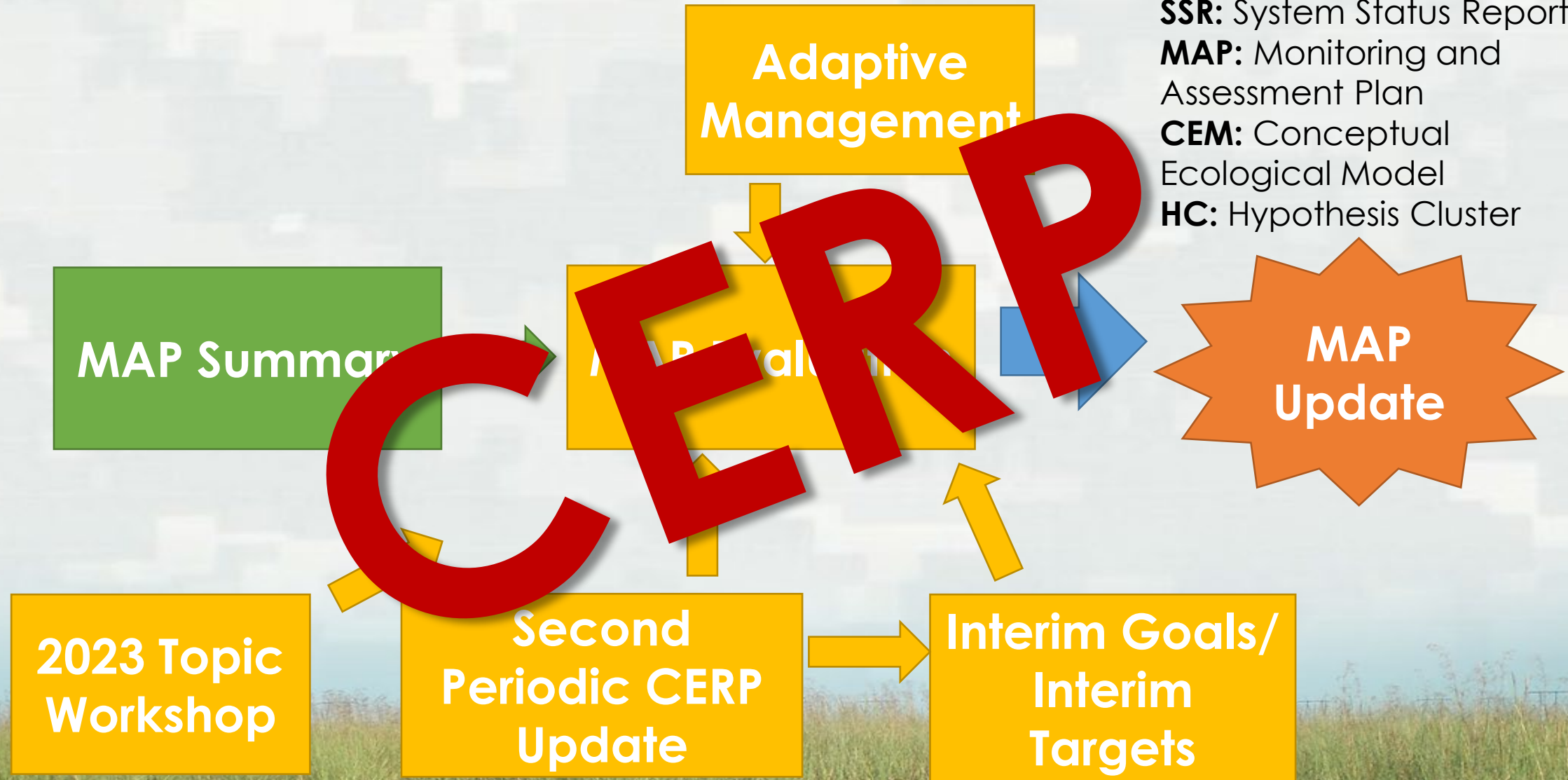
Acronym Definitions:
SSR: System Status Report
MAP: Monitoring and Assessment Plan
CEM: Conceptual Ecological Model
HC: Hypothesis Cluster



Acronym Definitions:
SSR: System Status Report
MAP: Monitoring and Assessment Plan
CEM: Conceptual Ecological Model
HC: Hypothesis Cluster

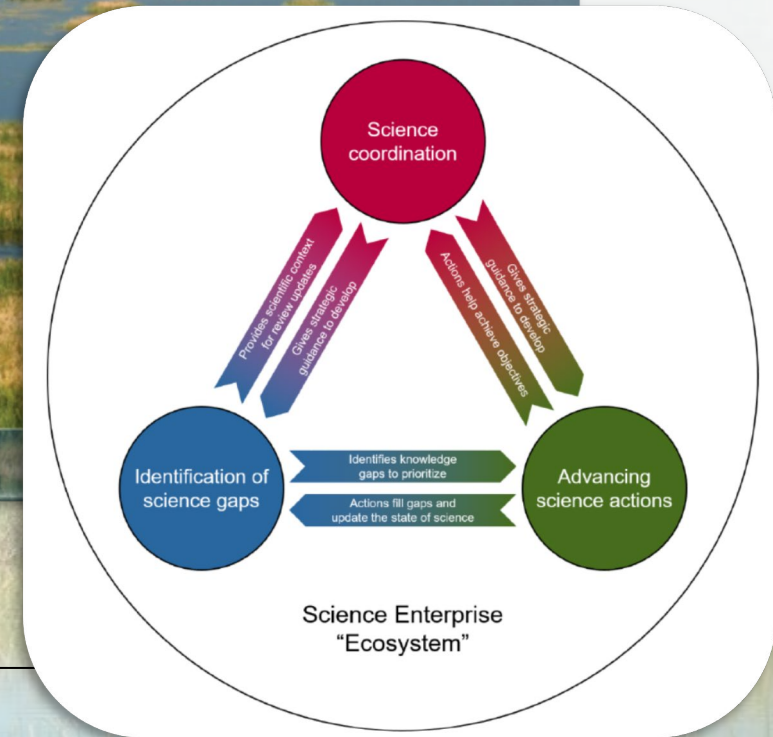
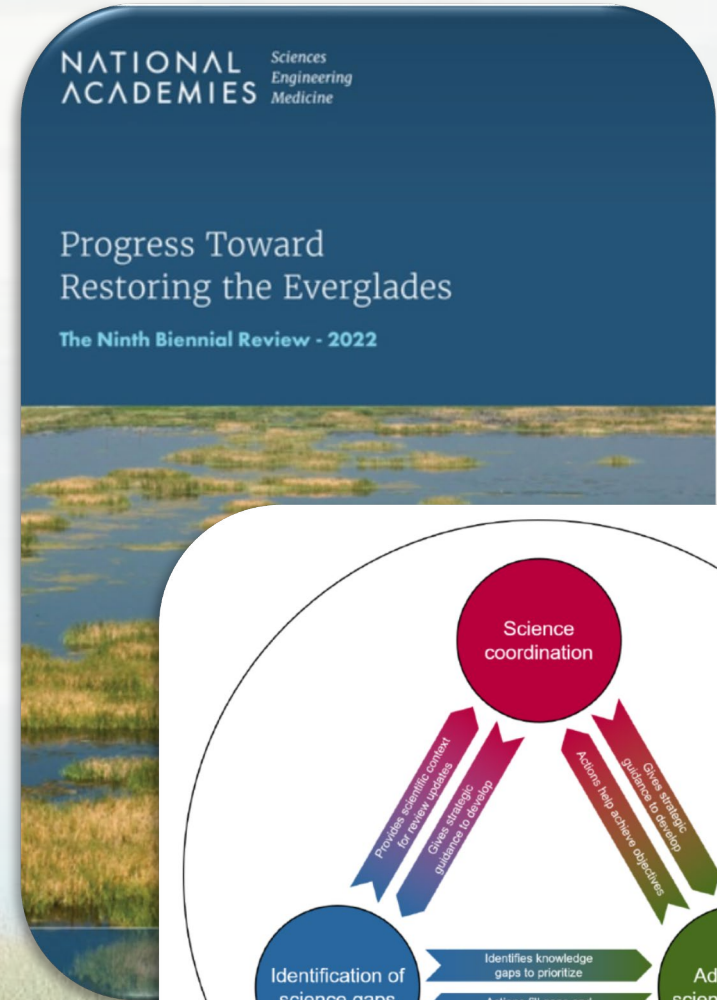


Acronym Definitions:
SSR: System Status Report
MAP: Monitoring and Assessment Plan
CEM: Conceptual Ecological Model
HC: Hypothesis Cluster



SOUTH FLORIDA SCIENCE PLAN ?

- Guide **resource investment** across multiple agencies
- Fill critical **knowledge gaps** for restoration decision-making
- Identify feasible **prioritized science actions**
- List of high priority science actions including:
 - **Model development**
 - **Targeted data collection**
 - **Data analysis**
 - **Research and synthesis**



KEY TAKEAWAYS

- CISRERP recommends development of a Science Plan
- RECOVER's efforts to update the CERP MAP can be leveraged by the Task Force to develop a Science Plan for South Florida Ecosystem Restoration Initiatives
- RECOVER proposes to work in parallel with the Science Coordination Group if a Science Plan is developed for CERP and non-CERP projects

Contact Information

RECOVER Program Managers:

Gina Paduano Ralph - gina.p.ralph@usace.army.mil

Phyllis Klarman - pklarman@sfwmd.gov



THANK YOU

